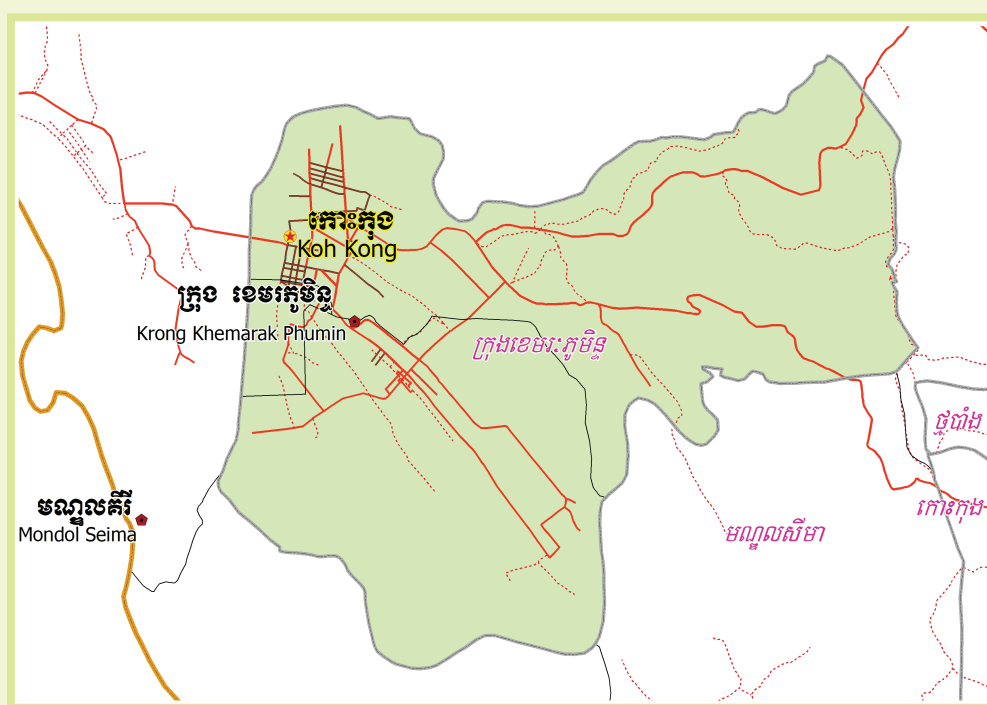


KINGDOM OF CAMBODIA
Nation Religion King



**National Committee for Sub-National
Democratic Development (NCDD)**



KHEMARA PHOUMIN Krong DATA BOOK 2009

Krong Code Nr: 904
Koh Kong Province

October 2009

Khemara Phoumin Krong Data Book 2009

District Code Nr: 904

Koh Kong Province

Table of Contents

List of Abbreviations	i
Glossary.....	ii
Preface	vi
Introduction	vii
SECTION A: GEOGRAPHY	1
1 Administration and Infrastructure.....	3
2 Land Use and Natural Resources.....	5
3 Geography	7
3.1 Land Area	7
3.2 Distances between Offices	7
SECTION B: DISTRICT PROFILE	9
1 General Information	11
1.1 Population of the District.....	11
1.2 Occupations	12
1.3 Property	14
2 Infrastructure and Economy.....	16
2.1 Roads in meters over 3 years.....	16
2.2 Sewerage Pipes in meters over 3 years.....	16
2.3 Drainage and Bridges	16
2.4 Services in the District	16
2.5 Agriculture.....	17
3 Social Aspects	27
3.1 Education	27
3.2 Health.....	33
3.3 Water and Sanitation	35
3.4 Vulnerable groups.....	39
3.5 Migration	41
4 Natural Resources and Environment (NRE).....	43
4.1 Families involved with NRE issues over 3 years	43
4.2 Percentage of Families involved with Natural Resource issues, by Commune, for 2008	43
4.3 Percentage Houses with access to Garbage collection and Families affected by environmental Pollution, by Commune, for 2008	43
4.4 Percentage Families using chemical Fertilizer and chemical Pesticides, by Commune, for 2008 ..	44
5 Administration and Security	44

5.1	Birth Registration across 3 years.....	44
5.2	Number of unregistered Infants born in 2008, by Commune	44
5.3	Registered criminal Cases over 3 years	44
5.4	Registered criminal Cases per 10,000 people, by Commune, for 2008.....	45
5.5	Number of registered Land Disputes, by Commune, in 2008	45
6	Gender	45
6.1	Registered Domestic Violence over 3 years.....	45
6.2	Percentage of registered cases of Families experiencing domestic Violence, by Commune, in 2008	46
6.3	Women's involvement over 3 years.....	46
6.4	Percentage of Female Participants in Civil Society and of 18-60 year women with uncertain Jobs, by Commune, in 2008	46
6.5	Female-headed Households over 3 years.....	47
6.6	Percentage female-headed Households and with Children of less than 5 years old, by Commune, in 2008	47
7	Indigenous People in the District	48
7.1	Ethnic Minorities in the District over 3 years.....	48
7.2	Other Minorities in the District over 3 years.....	48
	SECTION C: PLANS AND PROJECTS	49
8	Priorities and Plans	51
8.1	Priorities of Commune Councils for 2009 in the District by Sector	51
8.2	Temporary Agreements by Commune, for 2009	54
8.3	Outputs, estimated and actual costs of C/S Fund Projects between 2005 and 2008, by Commune	65
8.4	Total Expenditure on C/S Fund Projects by sector and commune between 2005 and 2008.....	67
8.5	Actual 2009 C/S Fund projects by Commune	67
9	District level Projects from 2006 to 2009	68
9.1	District Initiative Infrastructure Projects from 2006 to 2009	68
9.2	District Initiative Service Projects from 2006 to 2009	69
9.3	Inter Commune Council Projects in 2008 and 2009	69
9.4	Other Projects in 2008 and 2009	71
	SECTION D: SERVICES AND ORGANIZATIONS	73
10	Infrastructure.....	75
10.1	Length of and Expenditure on Roads in 2008, by District	75
10.2	Scale of and Expenditure on Irrigation in 2008, by District.....	75
10.3	Power Supply in 2008, by District	76
11	Health Facilities.....	77

11.1 Health Facilities in the Province, by Operational District.....	77
11.2 Health Facilities and Staff in the province, by Operational District.....	77
11.3 Deliveries in 2007 in the Province, by Operational District.....	78
12 Education	79
12.1 Schools, Classes, Students, Staff, for for all levels, for 2007/2008 by District.....	79
12.2 Characteristics of Schools and School Principals for 2007/2008 by Commune	79
12.3 Enrolment by Level of Education, 2006/2007 by Commune	80
12.4 Enrolment by Level of Education, 2007/2008 by Commune	80
12.5 Aspects of Enrolment for 2007/2008 by Commune.....	80
12.6 School Buildings for all schools in the District for 2007/2008, by Commune	80
12.7 Conditions of Classrooms and Existence of Separate School Office and Library, by Commune	81
12.8 Community Participation and Financing across all schools in the District for 2007/2008 by Commune	81
12.9 Percentage Student Flow Rates and Graduation by level 2006/2007, by Commune	81
13 Staff and Resources at the District	82
13.1 District Councilors elected in 2009	82
13.2 Committees of the Council.....	82
13.3 Board of Governors.....	82
13.4 Offices under Sala Krong, Sala Srok and Sala Khan	83
13.5 Municipality/District/Khan line offices.....	83
13.6 Properties and Equipment of District Administration	83
13.7 Registered Revenue of the District Administration in 2008	84
13.8 Services in the District	84
13.9 Civil Society Organizations active in the District.....	84
13.10 Private Sector Organizations.....	85
SECTION E: POVERTY DATA	87
14 Data on Poverty	89
14.1 Predicted Poverty Rates for 2009, by commune	89
14.2 Poverty data from survey.....	89

List of Abbreviations

#	Number
AGR	Agriculture
BR	Birth Registration
C. Pilot	Piloted Commune
C/S	Commune / Sangkat
CBO	Community-Based Organization
CDB	Commune Database
CDPD	Commune Development and Planning Database
CIP	Commune Investment plan
CLTS	Community Led-Total Sanitation
Comm.	Commune
Com Cov	Commune Covered
CPA	Complementary Package of Activities
CPS	Community Preschool
CCWC	Commune Committees for Women and Children
DANIDA	Danish International Development Agency
DDLG	Democratic Development and Local Governance Project (EC-UNDP)
DFID	Department For International Development (UK)
DIP	District Initiative Project
DIS	District Information System
District PDRD	District Office of Rural Development
District WP	District Work Plan
DIW	District Integration Workshop
DoLA	Department of Local Administration
Dr	Doctor
DWRM	District Office of Water Resource and Meterology
ECD	Early Childhood education (part of PE)
EMIS	Education Management Information System
Event IC	Celebration of International Days
FDH	Former District Hospital
GTZ	German Society for Technical Cooperation (Gesellschaft für Technische Zusammenarbeit GmbH)
Ha	Hectare
HC	Health Center
HC (NB)	Health Center (no building)
HH	Headed Household
HSI	Intervention for Health
HP	Health Post
HW	Hand Washing
ICC	Inter Commune Council
IFAD	International Fund for Agricultural Development
IND	Industry
Inter-commune	Inter-Commune Project Management Committee or Inter-commune project
IO	International Organization
LASED	Land Allocation for Socio-Economic Development
LGCR	Local Governance for Children's Rights
M&E	Monitoring and Evaluation
MA	Medical Assistant
MoEYS	Ministry of Education, Youth and Sports
MoH	Ministry of Health

MoP	Ministry of Planning
MPA	Minimum Package of Activities
MW1	Primary Midwives
MW2	Secondary Midwives
n/a	Not available
NCD	National Contracts Database
NCDD	National Committee for Sub-National Democratic Development
NGO	Non-Governmental Organization
NRML	Natural Resources Management and Livelihood
NU1	Primary Nurse
NU2	Secondary Nurse
OD	Operational District
ODF	Open Defecation Free
Ope. Costs	Operational Costs
Others	Other Staff
PBW	Public Works
PDoEYS	Provincial Department of Education, Youth and Sport
PDRD	Provincial Department of Rural Development
PDWRM	Provincial Department of Water Resource and Meteorology
PE	Parenting Education
PHAST	Participatory Hygiene and Sanitation Transformation
PHD	Provincial Health Department
PID	Project Information Database
PMC	Project Management Committee
Pop 04-05	Population Covered 2004 or 2005
PSDD	Project to Support Democratic Development through Decentralization and Deconcentration
RRD	Rural Road Development
RH	Referral Hospital
RILGP	Rural Investment and Local Governance Project
RPRP	Rural Poverty Reduction Program
RuLIP	Rural Livelihoods Improvement Program
SIDA	Swedish International Development Cooperation Agency
SPPA	Senior Provincial Program Advisor
TBA	Traditional Birth Attendant
UNDP	United Nations Development Project
UNICEF	United Nations Children's Fund
Vil	Village
Vil Cov	Village Covered
VIL-HC	Distance from Village to Health Center
WASH	Water, Sanitation and Hygiene
WRM	Water Resource and Meteorology

Glossary

C/S Fund: The Commune/Sangkat Fund is established and managed by the Government of Cambodia to provide financial support for development projects and administrative costs of Commune/Sangkat Councils. The amount is determined as a percentage of the National Budget (for 2009: 2.8% over the 2008 budget) and is expected to increase gradually over the years. The total 2009 budget under this fund is \$ 27,643,902 (of which \$ 19,272,170 is for Development Projects and \$ 8,371,731 for Administration). Under the Rural Investment and Local Governance Project the World Bank currently reimburses the costs of development projects if these meet the Bank's criteria.

CDB: the Commune Data Base is a national database, compiled by the Ministry of Planning, on the basis of detailed questionnaires, completed at village and commune level, which are then sent to the Departments of Planning for data entry. The most recent round of data collection took place at the end of 2008 (and is reflected in the District Data Books). Commune, District and Provincial Profiles can be generated from this database and should be available from provincial Departments of Planning.

CDPD: the Commune Development and Planning Database is a database maintained by Departments of Planning and Ministry of Planning, recording proposed activities as determined and prioritized by Commune and Sangkat Councils; the Temporary Agreements between these councils and supporting agencies, as decided at District Integration Workshops and details on projects that actually take place at commune, district and provincial levels.

CIP: The Commune Investment Plan is a rolling three-year plan, developed and decided by the Commune or Sangkat Council. It sets priorities and identifies the projects proposed for the years to come.

Commune and Sangkat (C/S): the Communes (in rural areas) and Sangkats (in urban areas) are the lowest and smallest units of local government. Councils are elected directly, once in five years, for the 1417 Communes and 204 Sangkats. In the C/S there are 14,119 villages, which have Village Chiefs, but don't constitute a formal level of local government.

DIP: the District Initiative Project is jointly supported by the MDLF (Multi-Donor Livelihood Facility (supporting the NRM&L Program)) and PSDD. In 2009 it covers 106 districts, 60% of the total in the country, with a budget of \$ 3.2 million. It is focused on capacity development in planning, democratic development, public competitive procurement, financial management and service delivery.

DIS: The District Information System is a national database maintained by NCDD, recording resources, staff, revenue, infrastructure and equipment available in the 193 Districts and Khans throughout the country. The last update took place in July 2009.

District, Municipality and Khan constitutes the third level of Government in Cambodia. There are 159 rural Districts, 26 Municipalities and 8 Khans of Phnom Penh Capital. They all have Councils which were, for the first time, elected in May 2009, by the Commune/Sangkat Councilors. These councils have a mandate for 5 years.

DIW: District Integration Workshops are held between July and October, to bring Commune/Sangkat Councils, looking for support for their projects, together with the governmental and non-governmental agencies that may provide support.

ICC: Inter Communes Council projects are executed in 10 provinces under the Democratic and Decentralized Local Governance Project (DDLG). This five year project (2006-2010) is executed by Ministry of Interior and funded by the European Commission and UNDP. The project focuses on improving dialogue partnership and accountability; create a network of Commune Councils at the provincial and national level and support and contribute to local area development for poverty reduction. The work under the ICC component supports investments and services formulated through inter-commune dialogue and planning.

MEDiCAM: A non-profit and non-partisan membership organization for NGOs active in Cambodia's health sector. It is the primary networking agency for health-related NGOs.

NCDD: the National Committee for sub-National Democratic Development is the inter-ministerial body charged with the implementation of the Organic Law (a key legislative document, adopted in 2008, outlining the envisaged decentralization). NCDD also channels substantial financial assistance by a number of Development Partners, to projects and programs at various levels. This amounted to over \$ 91 million in 2008. More information at: www.ncdd.gov.kh. This website also provides access to reports, manuals, legal documents, details on projects and more.

OD: the Operational Districts are the districts as defined and used by the Ministry of Health. These do not coincide with the 193 (Administrative) Districts and Khans, as used by all other RGC agencies. The Operational Districts are usually larger, and so there are 77 Operational Districts against 193 administrative Districts and Khans. However they do fit within the boundaries of administrative provinces.

PID: The Project Information Database is the database maintained by NCDD at national and sub national level, to follow all aspects of projects by Commune and Sangkat Councils, including the C/S Fund projects

Provincial Investment Fund (PIF)

The Provincial Investment Fund is allocated to all Provinces and Municipalities according to a population based formula. Part of the fund is earmarked for support to planning activities of the Provincial / Municipal Department of Planning; and to gender mainstreaming activities of the Provincial Department of Women's Affairs. The remaining "un-earmarked PIF" is allocated by PRDC to sectoral technical departments against established criteria and in response to proposals with prioritisation taking into account: priorities formulated by the CS Councils and aggregated by District into District Priority Activities Matrices (DPAM); alignment with national planning and poverty alleviation criteria, complementarity with other planned activities; and performance of the Department concerned in implementation of activities in previous years. With this provisional allocation, the Department then programs activities through the District Integration Process. Finally, the agreed activities, plus support costs amounting to no more than 25% of the total, are included in a sub-contract signed between PRDC and the Department, pursuant to the overall PSDD contract signed between NCDD and PRDC. Total budget has been around \$ 2 million per year.

Province: the 23 Provinces and Phnom Penh Capital City represent the 2nd layer of government. They vary in size, from very small, like Kep (approx. 36,000 people) and Pailin (approx. 70,000 people), or large but with small populations, like Mondulkiri (over 60,000 people), and Ratanakiri (over 153,000) to densely populated and large, like Kampong Cham (over 1.7 million people) and Kandal (approx. 1.4 Million people).

PSDD: the Project to Support Democratic Development through Decentralization and Deconcentration is funded by DFID (UK), SIDA (Sweden) and UNDP and runs from 2006 till the end of 2010 (including a one year extension). Annual budgets range from \$ 11 million to over \$ 18 million. The project provides core technical support to NCDD and to the provinces, financial support to the C/S Fund, District Initiative, Provincial Investment Fund and capacity building support through training, studies and advisory services.

RILGP: The Rural Investment and Local Governance Project is a World Bank funded project that provides substantial support to C/S Fund projects and to developing the required infrastructure, policies, systems and skills. It started in 2003 with a Loan for \$ 22 million for 2003-2007 and was then extended with a Grant of \$ 36 million for the period of 2007-2010. Discussions about a possible RILGP 2 are taking place between RGC and the World Bank.

RPRP: the Rural Poverty Reduction Project is a seven year project from 2004 till 2010, funded by IFAD and UNDP and implemented through the Ministry of Agriculture, Forestry and Fishery, supported by the Ministry of Interior and facilitated by NCDD. The project is active in the provinces Prey Veng and Svay Rieng and focuses on 120,600 households below poverty line. The objective is poverty reduction with the active participation of the poor through improved livelihoods, Strengthened capacity, Sustainable farming systems and natural resource management, new and/or rehabilitated infrastructure development, increase accessibly to technology, services and markets for their economic and social development.

RULIP: the Rural Livelihoods Improvement Project is implemented by the Ministry of Agriculture Forestry and Fisheries (MAFF)' Project Support Unit- PSU, with the NCDD playing the role of cooperating agency. Funded by IFAD and UNDP, the project will run till 2014. The target group consists of poor households who have little or even no land, few livestock or other assets and often many dependents. The main goal of the project is to directly or indirectly improve the livelihood systems, food security and incomes of a total of 33,900 rural poor, ethnic minority and female headed households in targeted village of Kratie, Preah Vihear and Ratanakiri provinces in a sustainable manner.

Seth Koma: The UNICEF funded Seth Koma program focuses on measurable action for children and women. During 2006 -2010 it is implemented in six provinces. Government and UNICEF pursue a set of inter-related goals, addressing critical stages of the life cycle of the child: a) Mothers have safe pregnancies and deliveries and healthy newborns; b) best possible start in life of infant; c) Children enter schools at the right age of six years; d) Children are protected from exploitation, abuse, violence, discrimination and other risks; and e) Youth and adolescents acquire life skills, express their views, participate in the decisions.

Preface

The Government of Cambodia attaches great importance to optimal use of scarce resources and to participatory planning and management at all levels. The Organic Law which was adopted in 2008 provides the legal context for further steps towards improving and decentralizing planning, management and monitoring, and towards greater accountability and transparency of institutions at sub-national levels.

The Government has established elected Councils at the sub-national levels, and we will progressively give them the responsibilities, together with the human and financial resources, to deliver a wide range of public services. They will be more democratic, more efficient, more transparent and accountable, better at addressing gender and other inequalities, and at fighting corruption. We recognize that development does not come from government alone; it needs the involvement of citizens, civil society and the private sector, and the new system will facilitate this.

A central element in this process is the availability of information on any aspect of development to all concerned parties. The newly elected Councillors at District and Khan level, line departments operating at these levels, but also NGOs, Development Partners, Commune Councillors and citizens throughout Cambodia need information on problems and requirements, resources and opportunities, services and agencies, plans and projects. They will need such information to better understand the present situation, set targets for the future, monitor progress, know what others are doing and to apply resources wisely and this is the reason the District Data books will be so valuable.

The District Data Books are a major step towards full transparency and towards informed planning and decision-making. They provide all available data at District, Khan, Commune and Sangkat level in easily accessible formats, in Khmer and English, through over 16,000 printed copies, CD-ROMs and the NCDD website.

This is the first time in Cambodia (and possibly in South East Asia) that such detailed information is made so widely available and NCDD should be commended for the hard work that has gone into this. We also thank the Ministry of Planning, which provided the detailed data of the Commune Data Base, the sectoral ministries and provincial authorities who contributed data and the Development Partners who provided financial support.

It is our sincere hope that the publication of the District Data Books will strengthen capacities, especially at district levels, for evidence-based development planning. We also hope that this information will deepen the understanding among Ministries, Provincial Authorities, Development Partners, NGOs and research agencies of the realities at commune and district levels.

We call upon all to use and distribute this information, complement or correct where appropriate and to contribute new data in the years to come.

Sar KHENG

Deputy Prime Minister, Minister of Interior and Chairman of NCDD

Introduction

Purpose

The purpose of the District Data Books is to bring together information on any aspect of life and development of Districts, Khans, Communes and Sangkat, together and make this widely available. The primary targets are the newly elected District Councilors, district level line departments, provincial agencies, Development Partners and NGOs operating at this level. They need detailed knowledge on current living conditions, natural resources, infrastructure, agriculture and other economic activities, current service levels, past and planned projects and available resources.

While much information exists on many of the above aspects, it is often hard to access that information and much is lost to reports, databases and statistics that are not widely shared. Data are often only available in one language and often out-of-date, and many reports cover only one sector or region.

We found that these problems are especially acute at the district level. Now that Districts are becoming a much more significant level of local government and development planning, there is an urgent need for wide-ranging data to be used for setting base-lines, planning and prioritizing, monitoring and learning.

Approach

We have attempted to identify and compile all available statistics, reports, maps and other data at district and/or commune level. From this we have selected information that is available for all or most districts, reasonably reliable and up-to-date, sufficiently detailed and of possible interest to development planners, decision makers, agencies and citizens.

The major sources of the information in these District Data Books are:

- a) The Commune Data Base information over the years 2006 to 2009 (the most recent data were collected late last 2008), as compiled by the Ministry of Planning
- b) Detailed information directly collected from the Ministry of Health, the Ministry of Education, Youth and Sports and (for maps) the Ministry of Land Management, Urban Planning and Construction
- c) The Project Information Database (PID) at NCDD (up-to-date)
- d) The Commune Development and Planning Database (CDPD) (up to date)
- e) The District Information System (DIS) (updated per Mid 2009)
- f) Direct data collection at provincial and district level on private sector, irrigation, roads, and electricity, through provincial agencies
- g) Medical data collected from MEDiCAM
- h) The ID Poor Project – for poverty data on a number of provinces and districts
- i) NCDD's work on predictive poverty rates
- j) Specific projects for outputs, plans and budgets (Seth Koma, RILGP, RPRP and ICC)

Limitations of the data

We are fully aware that the data we collected are not always complete, consistent or correct. While we have rejected information that was wrong or very incomplete, we decided not to aim for statistical and scientific perfection, but to include information that is useful, relevant

and comprehensive. We also accepted different sources for the same data as this may encourage discussion on the quality of the respective data.

We strongly encourage anyone who notes errors or incompleteness in these data to contact us and to share their data. We hope that the next round of producing such District Data Books can draw on wider sources and more complete data.

We encourage the District Administrations, who receive these data also in digital format, not only to use these for their planning and monitoring, but also to start correcting and updating these data and to share new data with NCDD for future use.

Contents

The information in the following pages is organized in five sections:

- a) **Geographical data:** this section provides maps on infrastructure and administration and on land use and natural resources management. These maps are also provided in large format to all Districts and Khans.
- b) **District Profile:** this presents wide ranging data, covering 2006 – 2009, at district and commune level, extracted from the Commune Data Base, but edited for better understanding.
- c) **Plans and Projects:** this section presents development priorities determined by Commune and Sangkat Councils, Temporary Agreements, outputs and expenditure of major projects at Commune and District level over 2006 – 2008 and plans and budgets for 2009.
- d) **Services and Organizations:** this section provides details on key infrastructure (roads, electricity, irrigation systems) and services in health and education at district and commune level. It also provides an inventory of resources at the District Administration, NGOs operating in the district and private sector agencies active in the district.
- e) **Poverty Data:** this section provides predicted poverty rates for 2009 for all districts and communes and detailed poverty data compiled and processed by the ID Poor project for those that have been covered by this project.

The future

It is our hope that this is the start of a longer-term process. We hope that a next edition of these District Data Books will offer more comprehensive, correct and up-to-date information. We hope that the District Administrations will not only start using this information, but also improve and update it. For this they are all provided with the full data set in digital format.

We invite agencies, projects and experts to send reports, statistics and maps that could be used for a next version to us and we invite all users of the District Data Books to inform us about errors, updates and inconsistencies. Please contact us through info@ncdd.gov.kh

We now invite you to browse through this data book. You may open this randomly or use the table of contents and go to the aspects that have your special interest.

We hope that you will be informed, surprised and assisted. We hope, above all, that this information will lead to a deeper understanding of causes and effects of poverty, to purposeful decisions on how to tackle those causes and to greater transparency in using scarce resources for the benefit of all.

Martin de Graaf
Program Advisor, PSDD/NCD

SECTION A: GEOGRAPHY

1 Administration and Infrastructure

Please see separate folder containing A3 maps.

2 Land Use and Natural Resources

Please see separate folder containing A3 maps

3 Geography

3.1 Land Area

Total Land Area (ha)	Forest Land Area (ha)		Cultivation Land Area (ha)	Construction Land Area (ha)	Other Land Area (ha)
	Total	Flooded Forest Area			
9170	0	0	250	0	0

3.2 Distances between Offices

Location	Distance (Km)
From District Office to C/S Office of Sangkat Smach Mean Chey	0
From District Office to C/S Office of Sangkat Dang Tong	0
From District Office to C/S Office of Sangkat Stueng Veang	0

SECTION B: DISTRICT PROFILE¹

¹ All data in this section come from the Commune Database (CDB) unless otherwise specified. These include primarily new CDB data, collected late 2008, and some data from earlier years. Please note that percentages are rounded to the nearest whole number.

1 General Information

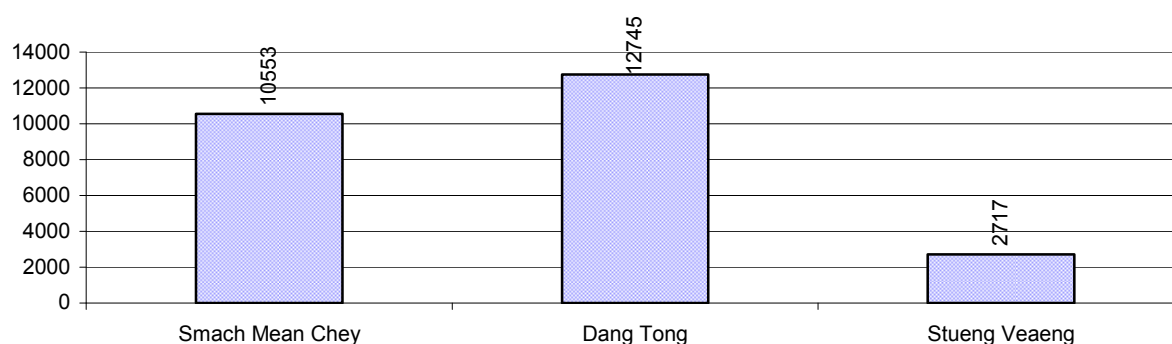
1.1 Population of the District

1.1.1 Total Population

Number of families	2005	2006	2007	2008
Total number of families	4,982 families	4,981 families	4,895 families	5,058 families
Increase (+)/Decrease (-) in nr of families		0%	-2%	3%
Total population	25,642 pers	26,553 pers	25,605 pers	26,015 pers
Increase (+)/Decrease (-) in nr of people		4%	-4%	2%
Number of female Headed Households (HH)	821 families	1,001 families	874 families	727 families

Note: Percentages of population and increase/decrease are calculated on basis of the previous year. A negative sign in front of the percentage indicates a decrease in population.

1.1.2 Population, by Commune, in 2008



1.1.3 Population, by Age Group, over 3 years

Population by age group	2006	2007	2008	
	%	%	%	Number
Age 0-5 years (as percentage of the population)	10%	10%	11%	2,878 persons
Male 0-5 yrs	51%	51%	51%	1,477 persons
Female 0-5 yrs	49%	49%	49%	1,401 persons
Age 6-17 (as percentage of the population)	35%	31%	32%	8,263 persons
Male 6-17 yrs	50%	49%	48%	3,949 persons
Female 6-17 yrs	50%	51%	52%	4,314 persons
Age 18-60 (as percentage of the population)	53%	56%	55%	14,218 persons
Male 18-60 yrs	49%	49%	49%	6,905 persons
Female 18-60 yrs	51%	51%	51%	7,313 persons
Age 61 above (as percentage of the population)	2%	2%	3%	656 persons
Male 61	50%	49%	54%	356 persons
Female 61	50%	51%	46%	300 persons

Note: The overall percentage for each age group is calculated on the basis of the total population. The gender distribution of each group is calculated on the basis of the population within that particular age group.

1.2 Occupations

1.2.1 Percentage of families with a particular Occupation over 3 years

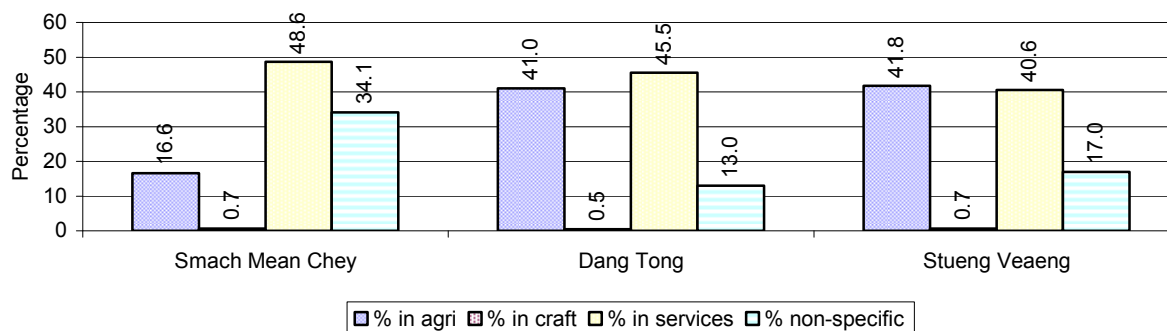
This table shows the percentage of the population who have a particular occupation (job), for example the percentage of the population in the district who are rice farmers, furniture crafter, trader, etc.

Description	2006	2007	2008	
	%	%	%	Number
Families whose main occupation is agriculture	26%	30%	31%	1,579 Families
Families whose primary occupation is rice farming	1%	1%	1%	38 Families
Families whose primary occupation is cultivating long-term crops	2%	1%	0%	23 Families
Families whose primary occupation is cultivating short-term crops	2%	1%	1%	64 Families
Families whose primary occupation is cultivating vegetable	1%	1%	2%	87 Families
Families whose primary occupation is fisherman	17%	24%	23%	1,174 Families
Families whose primary occupation is livestock farmer	2%	2%	4%	180 Families
Families whose primary occupation is NTFP collection	1%	0%	0%	13 Families
Families whose main occupation is craft work	1%	1%	1%	29 Families
Families, whose main occupation is in furniture craft, wooden, rattan, vine, bamboo	0%	0%	0%	3 Families
Families whose main occupation is in metal, aluminum, glass goods production	0%	0%	0%	8 Families
Families whose main occupation is food production	0%	0%	0%	12 Families
Families whose main occupation is tire, plastics and rubber goods production	0%	0%	0%	5 Families
Families whose main occupation is textile, clothing goods production	0%	0%	0%	0 Families
Families whose main occupation is in other production, not listed above	0%	0%	0%	1 Families
Families whose main occupation is services	44%	41%	46%	2,338 Families
Families whose main occupation is trade	5%	6%	6%	292 Families
Families whose main occupation is repair	1%	2%	2%	96 Families
Families whose main occupation is providing transport services	5%	6%	10%	530 Families
Families whose main occupation is providing other services	33%	27%	28%	1,420 Families
Families whose main occupation is not clear (or multi)	29%	28%	22%	1,112 Families

Note: The occupation percentages are calculated on the basis of the total number of families.

1.2.2 Percentage Families that work in one of four occupational sectors, by Commune in 2008

This table indicates the percentage of families involved in one of four occupation types: agriculture, craft, services or non-specific (other). Please note agriculture includes forestry activities such as cutting down trees and gathering gum from the trees.



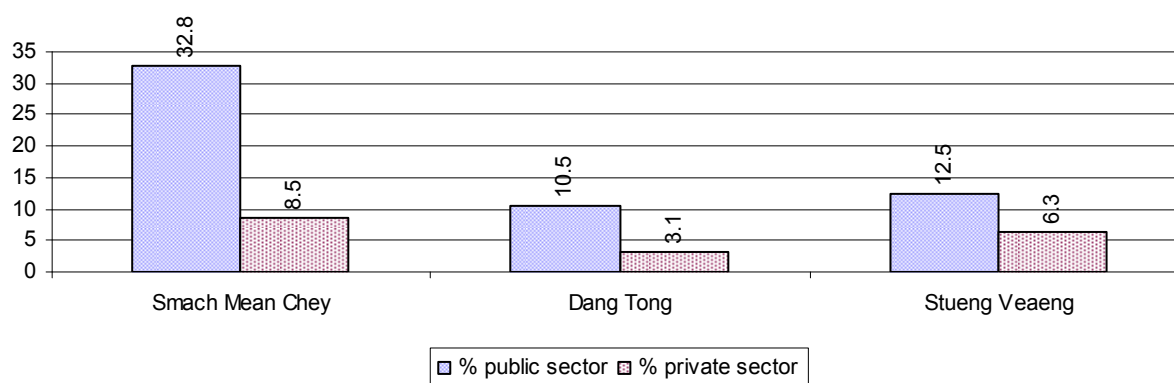
Note: Calculated on the basis of the total number of families within a commune.

1.2.3 Percentage of Families with public Sector, private Sector or uncertain Jobs, over 3 years

Description	2006	2007	2008	
	%	%	%	Number
Families that have a family member who is a government official, staff or worker	15%	20%	20%	1,002 families
Families that have a family member who is a private sector staff or worker	4%	9%	6%	287 families
Number of people aged 18-60 with uncertain/irregular jobs	9%	8%	8%	1,179 persons

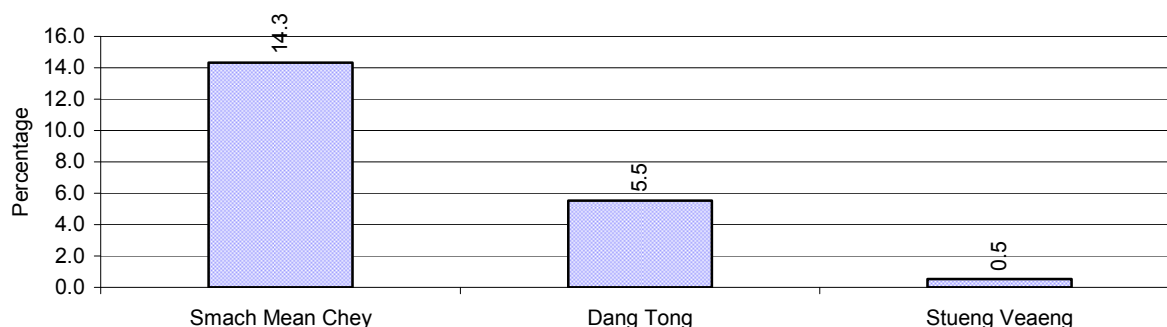
Note: In the first two rows percentages are calculated on the basis of the total number of families. In the third row the percentage is calculated on the basis of the total number of people aged 18-60 years.

1.2.4 Percentage of Families with public or private Sector Jobs, by Commune in 2008



Note: Calculated on the basis of the total number of families in the commune

1.2.5 Percentage of People aged 18-60 years with uncertain/irregular Jobs, by Commune, in 2008.



1.3 Property

1.3.1 Housing types and facilities over 3 years

This table shows the percentage of people living in a certain type of house. It also indicates how many houses have electricity or battery powered lights and how many have TV.

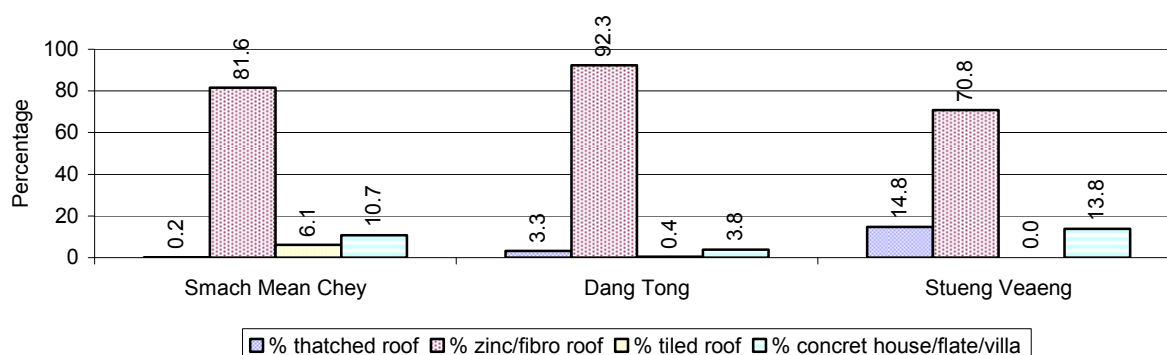
House Type	2006	2007	2008	
	%	%	%	Number
House with thatched roof	8 %	6 %	3 %	167 houses
House with zinc/fibro roof	80 %	82 %	86 %	4,110 houses
House with tiled roof	2 %	0 %	2 %	119 houses
Flats/apartments (with many families living)	1 %	1 %	1 %	46 houses
Concrete house or flat (with one family living)	4 %	11 %	6 %	307 houses
Villa house	6 %	0 %	1 %	41 houses
Houses with electricity	87 %	87 %	89 %	4,250 houses
Houses with battery light	10 %	12 %	10 %	467 houses
Houses with TV	67 %	83 %	86 %	4,120 houses

Note: Calculated against the total number of houses

1.3.2 Families living on public Land or without a permanent House

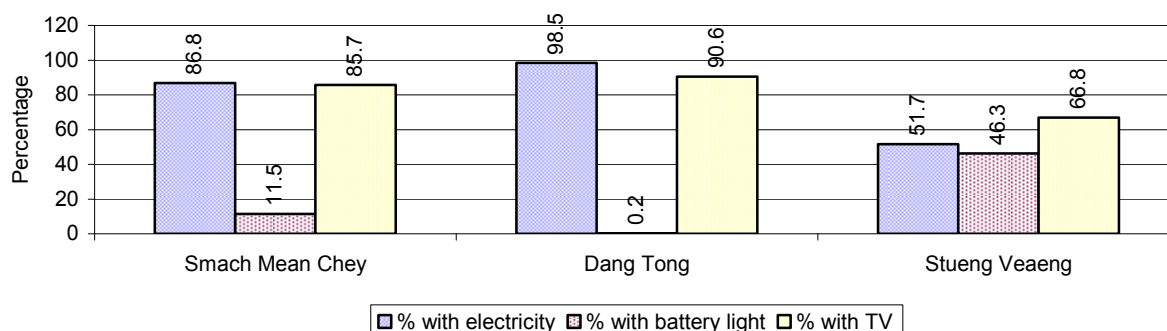
Living situation	2006	2007	2008
Families living in a house on public land	40 families	83 families	67 families
People, without permanent housing	43 person(s)	20 person(s)	30 person(s)

1.3.3 Percentage of Population living in a particular type of House, by Commune, in 2008



Note: Calculated against the total number of houses in each commune

1.3.4 Percentage of Houses with Electricity, Battery Lights and/or TVs, by Commune, in 2008



Note: Calculated against the total number of houses in each commune

1.3.5 Types of Vehicles and their ratio to Families across 3 years

This table shows the number of families per vehicle in the district. The last column shows the total number of each type of vehicle in the district for 2008.

Description	2006 ratio	2007 ratio	2008	
			Ratio	Number
Bicycle and bicycle with trailer	2	2	1	4,777
Ox-carts and horse-carts	4,981	4,895	2,529	2
Motorbike/with trailer	3	3	2	2,043
Motor tri-cycle	4	N/A	5,058	1
Large Transportation				
Total number of cars/trucks	23	14	13	381
Locally made vehicles	1,660	1,632	2,529	2
Trucks for goods transport	108	58	50	101
Buses/mini buses for passengers	138	74	78	65
Family cars	37	24	24	213
Agriculture machinery				
Tractors used for plowing	N/A	2,448	2,529	2
Power-tillage used for plowing	383	288	316	16
Other type of machinery				
Other type of machinery	2,491	979	723	7
Water transportation				
Row boats	82	56	169	30
Total number of motor boats	5	5	4	1,165
Motor boats used for fishing	6	6	5	1,087
Motor boats used for passengers	4,981	4,895	2,529	2
Motor boats used for goods transporting	78	122	67	76

Note: Ratio of families to a particular type of vehicle is the result of the total number of families divided by total number of that type of vehicle. Other types of vehicles, such as bulldozer, excavator, rollers etc. are not listed.

2 Infrastructure and Economy

2.1 Roads in meters over 3 years

Description	2006	2007	2008
Bituminous road	0 m	0 m	23,588 m
DBST, Macadam road	0 m	0 m	0 m
Concrete road	250 m	1,179 m	2,058 m
Laterite road	1,487 m	62,774 m	51,090 m
Constructed earth road	0 m	6,092 m	6,132 m
Un-constructed earth road	1,264 m	5,437 m	7,762 m

2.2 Sewerage Pipes in meters over 3 years

Description	Sewage pipe length		
	2006	2007	2008
Total length of sewage pipe, diameter 30-50 cm	0 m	10 m	160 m
Length of newly constructed sewage pipe, diameter 30-50 cm	0 m	20 m	2,136 m
Length of sewage pipe, diameter 30-50 cm needs repair/rehabilitation	0 m	0 m	0 m
Total length of sewage pipe, diameter of pipe 60-100 cm	47 m	7,091 m	9,129 m
Length of newly constructed sewage pipe, diameter 60-100 cm	347 m	120 m	2,516 m
Length of sewage pipe, diameter 60-100 cm needs repair/rehabilitation	0 m	2,507 m	368 m
Sewage pipe, diameter of pipe over 100 cm	4 m	4 m	5,078 m
Length of newly constructed sewage pipe, diameter over 100 cm	0 m	0 m	5,000 m
Length of sewage pipe, diameter over 100 cm needs repair/rehabilitation	0 m	0 m	0 m

2.3 Drainage and Bridges

Construction Type	2006		2007		2008	
	place(s)	Length	place(s)	Length	place(s)	Length
Single pipe culvert	18	110m	43	2,835 m	28	563 m
Double-pipe culvert	3	18m	11	74 m	11	104 m
Box pipe culvert	1	8m	2	30m	4	36 m
Wooden bridge	1	15m	2	38m	1	20 m
Concrete bridge	0	0m	9	136m	11	311 m
Bale bridge	0	0m	0	0m	0	0 m
Spillway construction	0	0m	1	6m	0	0 m

2.4 Services in the District

Descriptions	Number of places by year		
	2006	2007	2008
Public			
Electricity generating stations	1	1	1
Health clinics	7	4	9
Private			
Bicycle and motorcycle repair places	26	21	30
Agricultural machinery, tools and equipment repair places	12	11	19
Electronic tool repair places	14	14	20

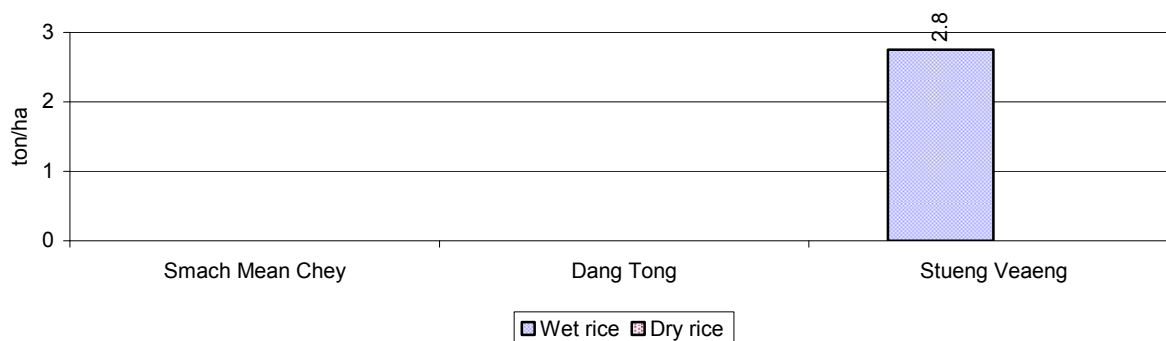
Descriptions	Number of places by year		
	2006	2007	2008
Battery-charging services	4	4	10
Handicraft places, wooden furniture and forest by-products	5	3	6
Other handicraft places (excluding furniture)	11	5	13
Small-scale services (hairstylist, phone service, massage, Karaoke, etc)	62	61	76
Small-scale food shop businesses (Food, groceries, drink shop, etc)	183	37	48
Small-scale rice mills	4	4	7
Medium or large-scale rice mills	0	0	0
Small-scale markets	1	1	1
Large-scale market	1	1	1
Alcohol refinery places	8	5	17
Pharmacies and small drug stores	7	6	6
Hotels	7	5	6
Guest houses	11	10	21
Restaurants	15	3	5
Gasoline stations	1	1	1

2.5 Agriculture

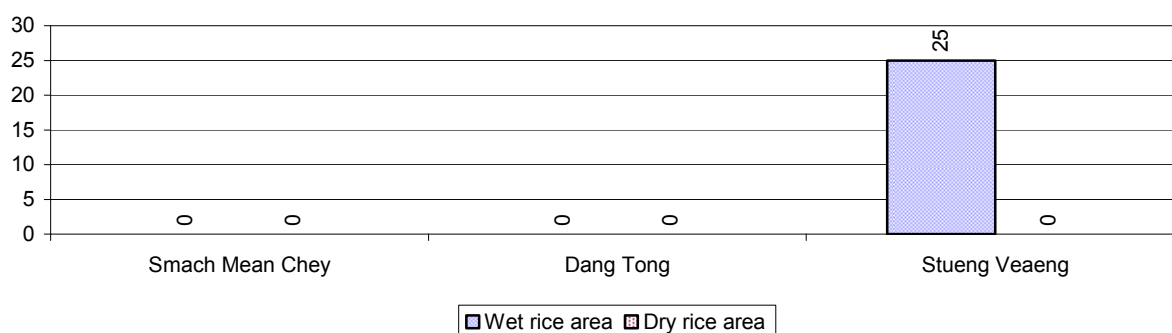
2.5.1 Rice cultivation in the District over 3 years

Description	2006	2007	2008
Total dry rice land area	0 ha	0 ha	0 ha
Actual dry rice cultivation area	0 ha	0 ha	0 ha
% actual cultivation to total land	-%	-%	-%
Total dry rice production	- tonne(s)	- tonne(s)	- tonne(s)
Average dry rice yield	- tonne(s)/ha	- tonne(s)/ha	- tonne(s)/ha
Total wet rice land area	250 ha	250 ha	250 ha
Actual wet rice cultivation area	33 ha	25 ha	25 ha
% actual cultivation to total land	13 %	10%	10%
Total wet rice production	49.50 tonne(s)	50.00 tonne(s)	68.75 tonne(s)
Average wet rice yield	1.5 tonne(s)/ha	2.0 tonne(s)/ha	2.8 tonne(s)/ha
Total intensive rice land area	0 ha	0 ha	0 ha
Actual intensive rice cultivation area	- ha	- ha	- ha
Average intensive rice yield	- tonne(s)/ha	- tonne(s)/ha	- tonne(s)/ha
Actual upland rice cultivation area	10 ha	10 ha	0 ha
Total upland rice production	20 tonne(s)	20 tonne(s)	- tonne(s)
Average upland rice yield	2.0 tonne(s)/ha	2.0 tonne(s)/ha	- tonne(s)/ha

2.5.2 Estimated wet and dry Season Rice Yield in tonne(s)/Ha, by Commune, in 2008



2.5.3 Cultivated wet and dry Season Rice areas in Ha, by Commune, in 2008



2.5.4 Estimated intensive Rice Yields in tonnes/Ha, by Commune, for 2008

There were no estimated intensive rice yields in this District in 2008

2.5.5 Estimated upland Rice Yield in tonnes/Ha, by Commune, for 2008

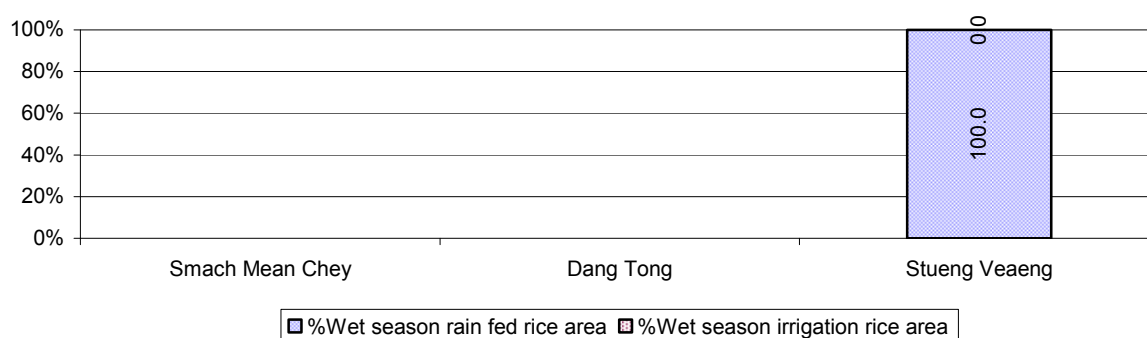
There were no estimated upland rice yields in this District in 2008

2.5.6 Wet season Rice irrigation across 3 years

Description		2006 %	2007 %	2008	
				%	Number
Total area of wet season rain fed rice land		100%	100%	100 %	25 ha
Percentage of wet season rice land that is irrigated; and for 2008 area in Ha		6 %	0 %	0 %	0 ha
Where	Area irrigated from canal/dam	0 %	- %	- %	0 ha
	Area irrigated from river, stream, lake, natural pond	0 %	- %	- %	0 ha
	Area irrigated from drilled well	0 %	- %	- %	0 ha
	Area irrigated from dug pond	0 %	- %	- %	0 ha

2.5.7 Water sources for wet Season Rice Cultivation, by Commune, in 2008

This chart shows the percentage of wet season rice cultivation receiving water from rain (natural) and from irrigation.



2.5.8 Access to Irrigation

Description	2006 %	2007 %	2008	
			%	Number
Families who have access to irrigation water	0%	0%	0%	0 families
Families who have irrigation wells	19%	0%	0%	0 families

Note: Calculated against the total number of families are rice farmers

2.5.9 Number of Irrigation Wells over 3 years

Description	2006	2007	2008
Number of irrigation wells	4 wells	0 wells	0 wells

2.5.10 Percentage of Families with access to (supplemental) Irrigation for wet Season Rice cultivation, by Commune, in 2008

There are no families with access to supplemental irrigation for wet season rice irrigation in this District in 2008

Note: % of families, with access to irrigation is calculated against the total number of families, whose main occupation is rice farming. Irrigated wet rice land area is calculated against the total actual wet rice land cultivated areas

2.5.11 Irrigation Wells, by Commune, in 2008

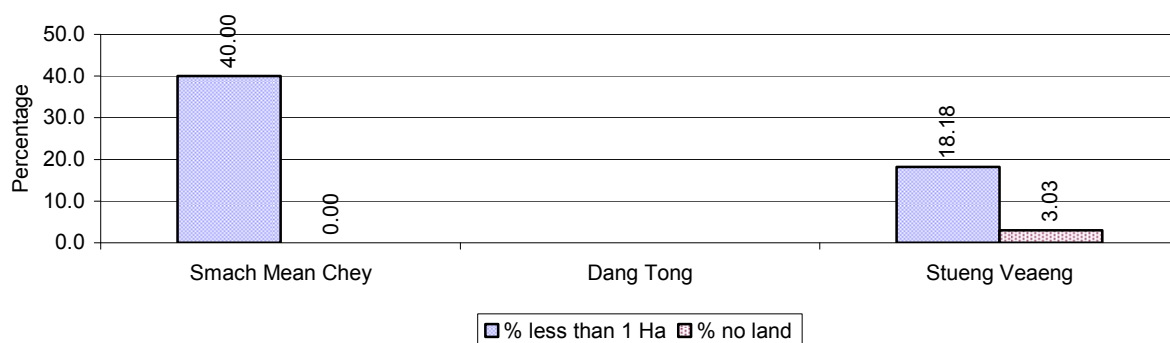
There are no irrigations wells in this District in 2008

2.5.12 Farmers owning less than one hectare of Rice Land

Description	2006 %	2007 %	2008	
			%	Number
Families who have less than one hectare of rice land	12%	18%	21%	8 families
Families who do not own any rice land	7%	12%	3%	1 families

Note: Calculated on basis of total number of families who are rice farming

2.5.13 Percentage of Farmers with less than one Hectare or no Rice Land, by Commune, in 2008

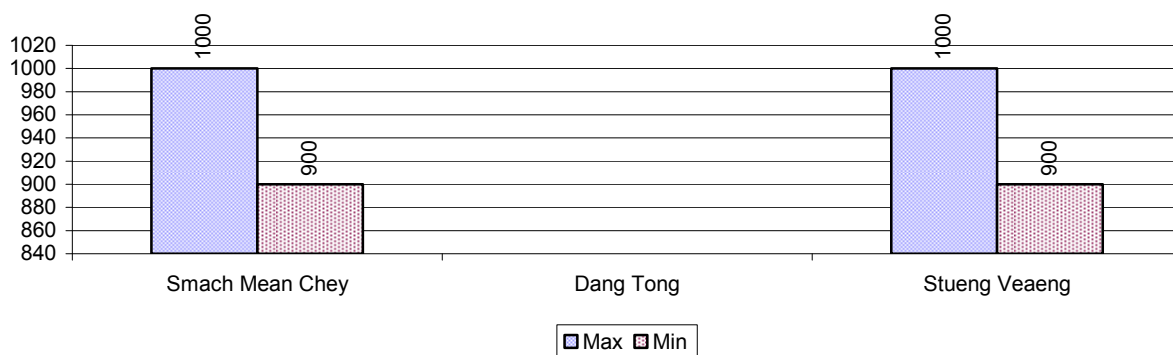


Note: Calculated on basis of total number of families who are rice farming

2.5.14 Average farm-gate Prices of Rice, over 3 years

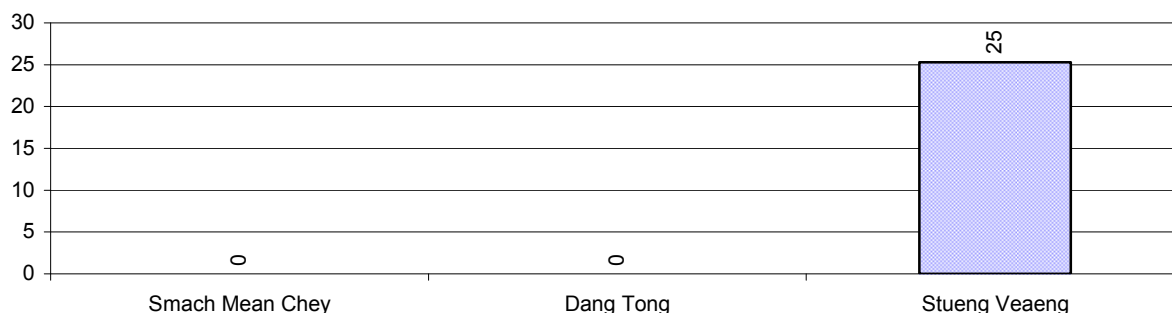
Description	2006	2007	2008
Maximum average farm gate price	700 Riels/Kg	1,400 Riels/Kg	1,000 Riels/Kg
Minimum average farm gate price	550 Riels/Kg	1,200 Riels/Kg	900 Riels/Kg
Average farm gate price	625 Riels/Kg	1,300 Riels/Kg	950 Riels/Kg
Average rice production per person	3 Kg/person	3 Kg/person	3 Kg/person

2.5.15 Minimum and maximum farm-gate Prices of Rice in Riel/kg, by Commune, in 2008



2.5.16 Production of Paddy in Kgs/Person, by Commune, in 2008

This table shows how much paddy (harvested rice) is produced in a year in a commune, in kgs per person.



2.5.17 Production of other Crops, over 3 years

Crops	2006	2007	2008
Corn cultivation area	0 ha	0 ha	0 ha
Estimated corn yield	- tonne(s)/ha	- tonne(s)/ha	- tonne(s)/ha
Estimated corn production	- tonne(s)	- tonne(s)	- tonne(s)
Soya bean cultivation area	0 ha	0 ha	0 ha
Estimated Soya bean yield	- tonne(s)/ha	- tonne(s)/ha	- tonne(s)/ha
Estimated Soya bean production	- tonne(s)	- tonne(s)	- tonne(s)
Mungbean cultivation area	0 ha	0 ha	0 ha
Estimated Mungbean yield	- tonne(s)/ha	- tonne(s)/ha	- tonne(s)/ha
Estimated Mungbean production	- tonne(s)	- tonne(s)	- tonne(s)
Peanut cultivation area	0 ha	0 ha	0 ha
Estimated Peanut yield	- tonne(s)/ha	- tonne(s)/ha	- tonne(s)/ha
Estimated Peanut production	- tonne(s)	- tonne(s)	- tonne(s)
Cassava cultivation area	0 ha	0 ha	0 ha
Estimated Cassava yield	- tonne(s)/ha	- tonne(s)/ha	- tonne(s)/ha
Estimated Cassava production	- tonne(s)	- tonne(s)	- tonne(s)
Sweet potatoes cultivation area	0 ha	0 ha	0 ha
Estimated Sweet potatoes yield	- tonne(s)/ha	- tonne(s)/ha	- tonne(s)/ha
Estimated Sweet potatoes production	- tonne(s)	- tonne(s)	- tonne(s)
Sesame cultivation area	0 ha	0 ha	0 ha
Estimated Sesame yield	- tonne(s)/ha	- tonne(s)/ha	- tonne(s)/ha
Estimated Sesame production	- tonne(s)	- tonne(s)	- tonne(s)

2.5.18 Yields of Corn, Soya beans and Mungbeans in tonne(s)/ha, by Commune, in 2008

There were no yields for any of these crops in this District in 2008

2.5.19 Yields of Peanuts and Cassava in tonne(s)/ha by Commune, in 2008

There were no yields for any of these crops in this District in 2008

2.5.20 Yields of Sweet Potatoes and Sesame in tonne(s)/ha, by Commune, in 2008

There were no yields for any of these crops in this District in 2008

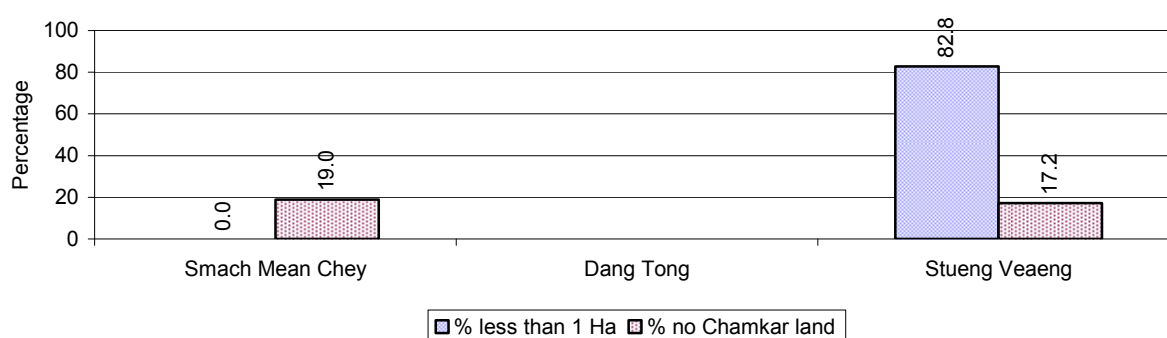
2.5.21 Percentage Farmers who own less than 1 Ha or no Chamkar land

Description	2006 %	2007 %	2008	
			%	Number
Families, who own less than 1ha of Chamkar land	2%	1%	28%	48 families
Families, with no Chamkar land	17%	13%	18%	32 families

Note 1: Calculated as a percentage of the total number of families whose main occupation is Chamkar (not rice) farming

Note 2: Chamkar land is no-rice land, i.e. other crops

2.5.22 Percentage Farmers owning less than 1 ha or no Chamkar land, by Commune, in 2008



Note: Percentage is calculated among families, who Chamkar farm as a main occupation, not the total population of the commune.

2.5.23 Percentage of Families raising Cattle/Buffalo, over 3 years

Description	2006 %	2007 %	2008	
			%	Number
Families raising cattle/buffalo	2%	3%	2%	103 families
Families raising cattle/buffalo as labor forces	1%	1%	1%	42 families

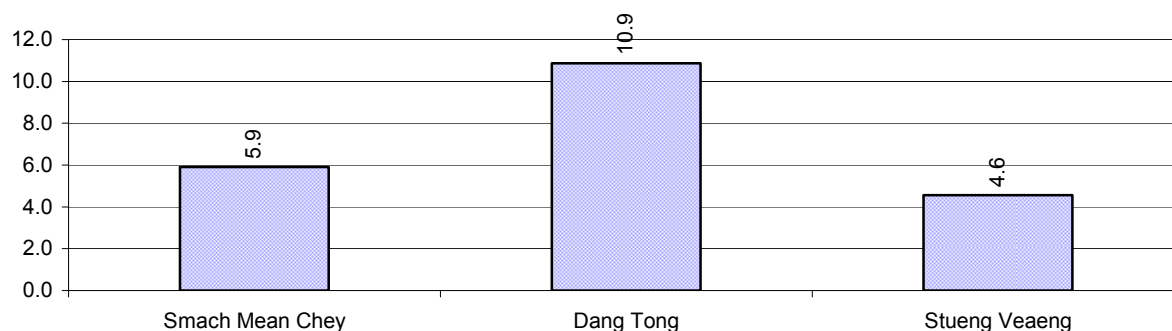
Note: Calculated against the total number of families.

2.5.24 Number of Cattle/buffalo being raised, over 3 years

Description	2006	2007	2008
Total number of cattle/buffalo	409 head(s)	453 head(s)	581 head(s)
Average cattle/buffalo per families	3.3 head(s)/families	3.6 head(s)/families	6 head(s)/families

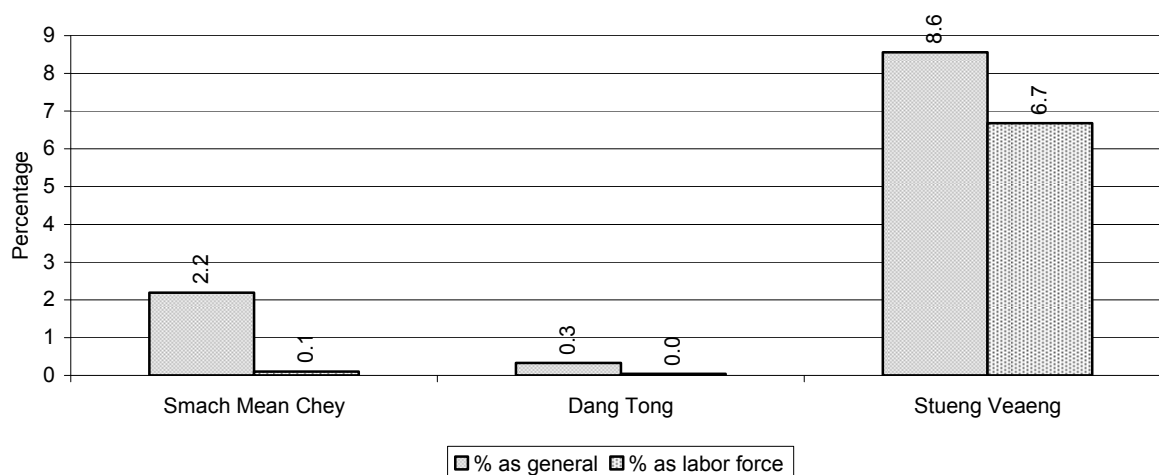
Note: Calculated by dividing total number of cattle/buffalo by total number of cattle/buffalo raising families

2.5.25 Average number of Cattle/Buffalo per Family, by Commune, in 2008



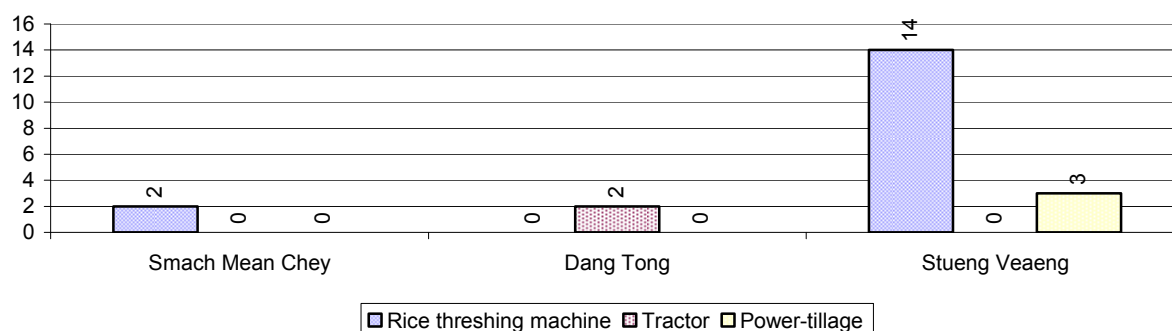
Note: Calculated by dividing total number of cattle/buffalo by total number of cattle/buffalo raising families

2.5.26 Percentage Families raising Cattle/Buffalo, for general and labor purposes in 2008, by Commune



Note: Calculated using the total number of families raising cattle/buffalo against the total number of families.

2.5.27 Type and number of agricultural Machines, by Commune, in 2008

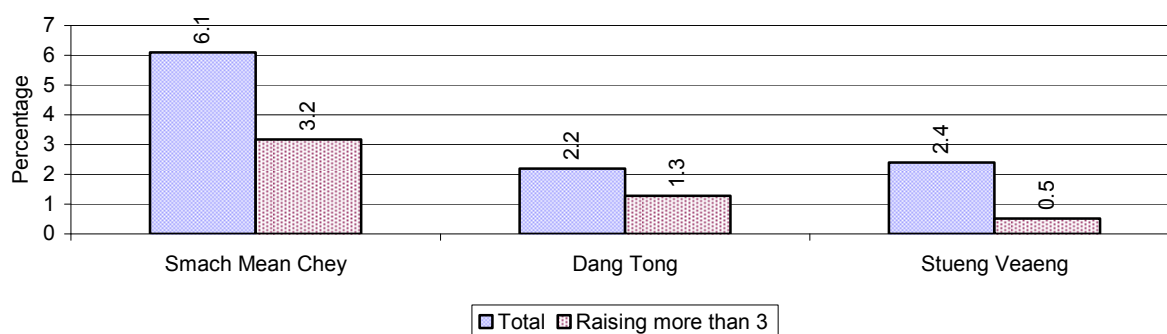


2.5.28 Livestock-producing Households over 3 years

Description	2006 %	2007 %	2008	
			%	Number
Total number of families raising pigs	4%	5%	4%	192 families
number of families raising more than 3 pigs	3%	2%	2%	99 families
Total number of families raising chickens	45%	24%	28%	1,439 families
number of families raising more than 3 chickens	42%	14%	16%	820 families
Total number of families raising ducks	2%	3%	2%	108 families
number of families raising more than 5 ducks	2%	2%	1%	72 families
Total number of families raising goats or sheep	0%	0%	0%	3 families
Total number of families raising horses	0%	0%	0%	0 families

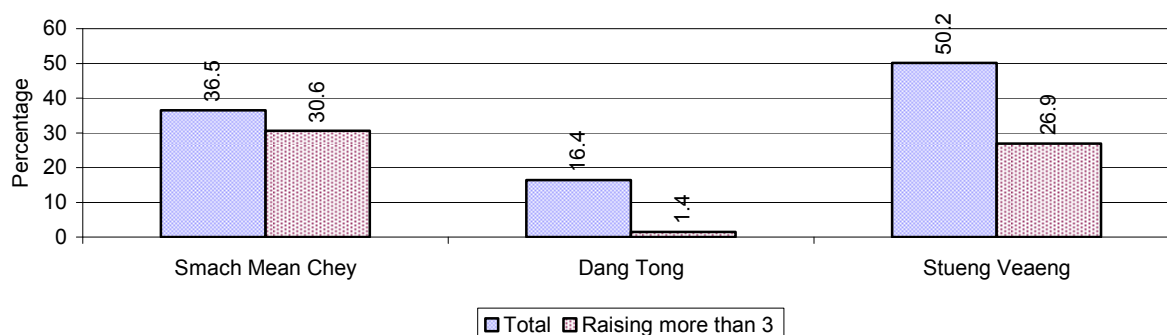
Note: Calculated against the total number of families

2.5.29 Percentage Families raising Pigs, by Commune, in 2008



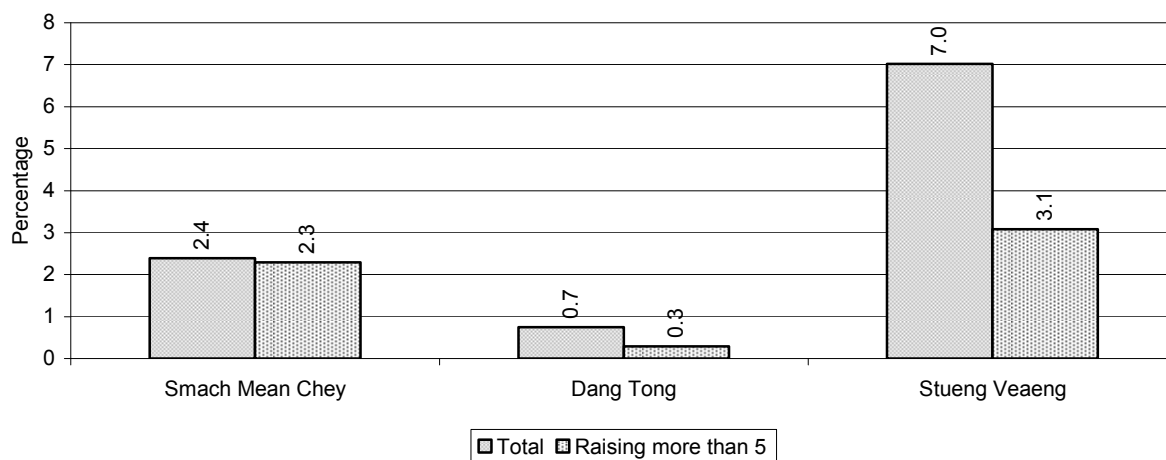
Note: Calculated against the total number of families in the commune

2.5.30 Percentage Families raising Chickens, by Commune, in 2008



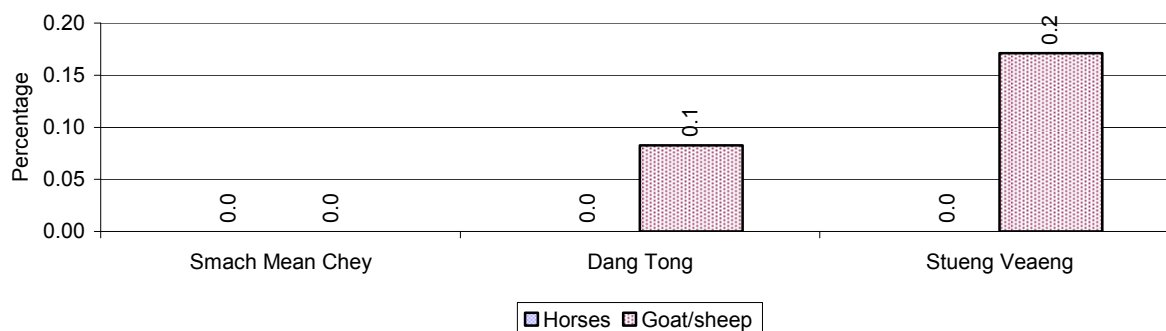
Note: Calculated against the total number of families in the commune

2.5.31 Percentage Families raising Ducks, by Commune, in 2008



Note: Calculated against the total number of families in the commune

2.5.32 Percentage Families raising Horses, Goats or Sheep, by Commune, in 2008

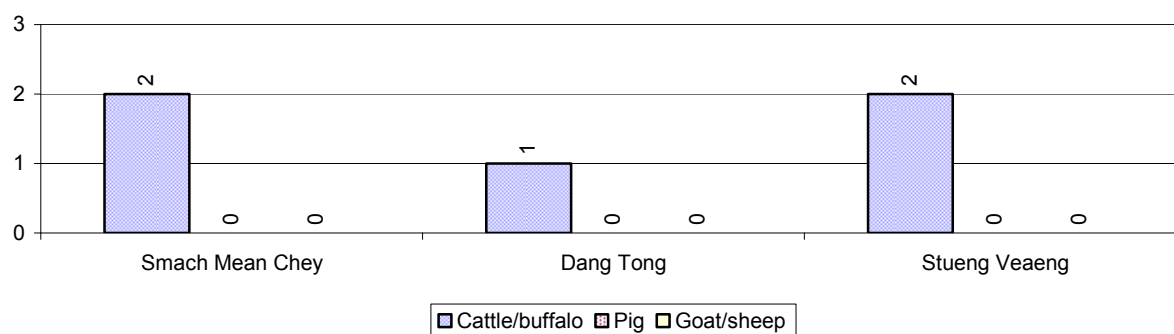


Note: Calculated against the total number of families in the commune

2.5.33 Livestock Farms over 3 years

Description	2006	2007	2008
Number of cattle/buffalo farms	8 farm(s)	1 farm(s)	5 farm(s)
Number of pig farms	5 farm(s)	22 farm(s)	0 farm(s)
Number of goat/sheep farms	2 farm(s)	0 farm(s)	0 farm(s)
Number of chicken farms	0 farm(s)	12 farm(s)	0 farm(s)
Number of duck farms	0 farm(s)	2 farm(s)	0 farm(s)

2.5.34 Number Livestock Farms, by Commune in 2008



Note: Number of farms are recorded by the village chief, not by counting number of livestock in each farm

2.5.35 Number Chicken and Duck Farms, by Commune, for 2008

There were no farms of this type in this District in 2008

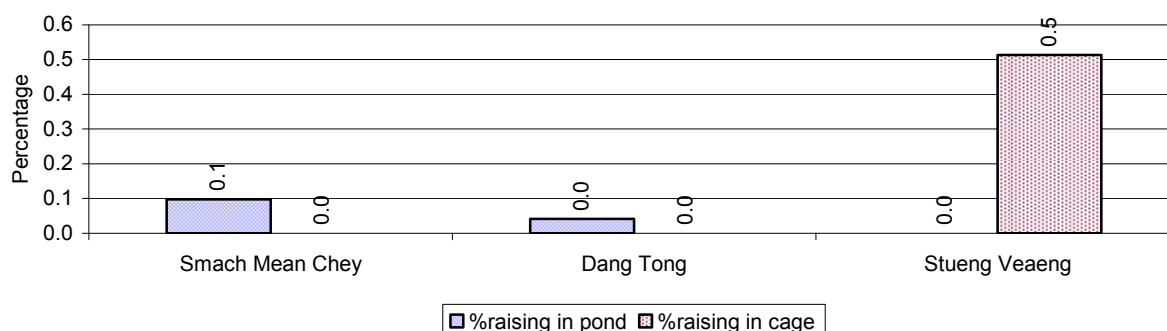
Note: Number of farm places recorded by village chief, not by counting number of livestock in each farm

2.5.36 Families raising Fish over 3 years

Description	2006	2007	2008
Total number of families raising fish	7 families	5 families	6 families
% families raising fish	0%	0%	0%
Number families raising fish in pond	4 families	2 families	3 families
% families raising fish in pond	0%	0 %	0%
Number fish pond	6 pond(s)	2 pond(s)	4 pond(s)
No. of ponds per family	1.5 pond/families	1.0 pond/families	1.3 pond/families
Number of families raising fish in cage	3 families	3 families	3 families
%families raising fish in cage	0 %	0 %	0%
Number of fish cage	5 cage(s)	3 cage(s)	3 cage(s)
No. of fish cage per family	1.7 cage /families	1.0 cage /families	1.0 cage /families

Note: % of families raising fish or fish in ponds or cages is calculated a percentage of the total number of families.

2.5.37 Percentage of Families raising Fish, by Commune, in 2008



Note: Calculated as a percentage of the total number of families in the commune.

2.5.38 Shrimp and Prawn Farming over 3 years

Description	2006	2007	2008
Number of families raising shrimps	0 families	0 families	0 families
% Families raising shrimps	0%	0%	0%
Number of shrimp ponds	0 pond	0 pond	0 pond
Total area raising shrimps	0 ha	0 ha	0 ha
Area per family	-ha/families	-ha/families	-ha/families
Number of families raising prawns	0 families	0 families	0 families
% families raising prawns	0%	0%	0%
Number prawn ponds	0 pond	0 pond	0 pond
Ponds per families	- pond/families	-pond/families	-pond/families
Number of prawn cages	0 cage	0 cage	0 cage
Cages per families	0 cage /families	0 cage /families	0 cage /families

Note: Percentage of families raising either prawns or shrimp is calculated against the number of families, who do aquaculture farming, NOT the total population.

2.5.39 Numbers of Families raising Shrimps and number of Shrimp Ponds, by Commune, in 2008

There were none of these in this District in 2008

2.5.40 Number of Families raising Prawn and Number of Prawn Ponds/Cages, by Commune, in 2008

There were none of these in this District in 2008

3 Social Aspects**3.1 Education****3.1.1 Kindergarten in the District over 3 years**

Description	2006	2007	2008
Number of community kindergarten schools	0 school(s)	2 school(s)	2 school(s)
Number of community kindergarten class rooms	0 room(s)	10 room(s)	10 room(s)
Number of community kindergarten classes	0 class(es)	10 class(es)	10 class(es)
Number of community kindergarten teachers	0 person(s)	11 person(s)	11 person(s)
Number of women community kindergarten teachers	0 women	10 women	10 women
Number of state and private kindergarten schools	2 school(s)	2 school(s)	2 school(s)
Number of state and private kindergarten class rooms	2 room(s)	2 room(s)	2 room(s)
Number of state and private kindergarten classes	2 class(e)s	2 class(es)	2 class(es)
Number of state and private kindergarten teachers	3 person(s)	2 person(s)	2 person(s)
Number of women state and private kindergarten teachers	3 women	2 women	2 women

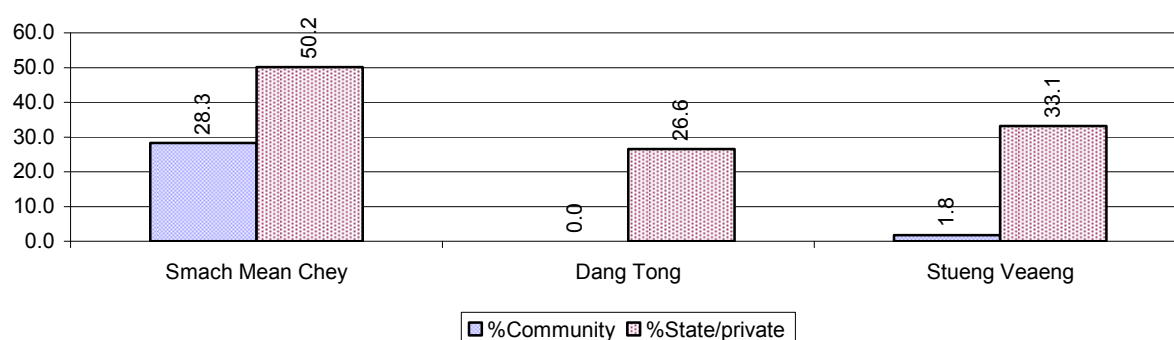
3.1.2 Percentage enrolment at Kindergarten level over 3 years

This table shows the percentage of the total 3-5 year old population attending kindergarten.

Description	2006 %	2007 %	2008	
			%	Number
Total percentage of children, 3-5 yrs, go to kindergarten	33%	38%	51%	1,054 person(s)
Percentage of children, 3-5 yrs, go community kindergarten	5%	7%	13%	271 person(s)
Percentage children, 3-5 yrs, go state/private kindergarten	28%	31%	38%	783 person(s)

Note: Calculated against the total for that age group

3.1.3 Percentage of Children 3-5 yrs attending Kindergarten, by Commune, in 2008



3.1.4 Basic Education over 3 years

Primary School

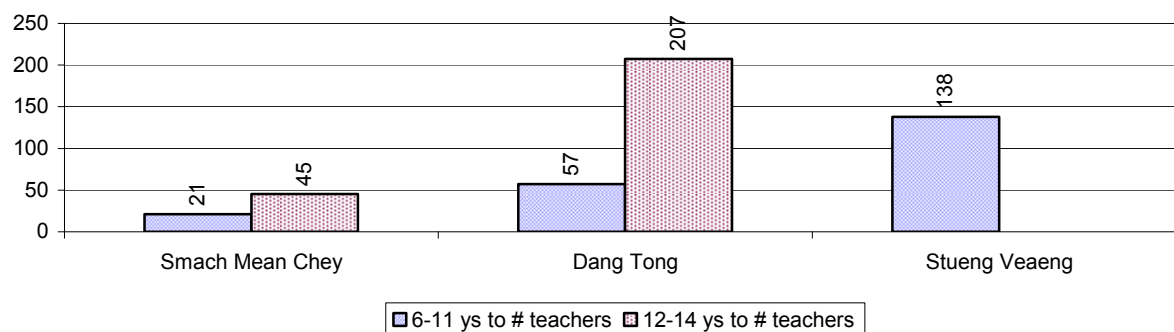
Description	2006	2007	2008
Number of primary schools	6 school(s)	6 school(s)	6 school(s)
Number of primary school rooms	65 room(s)	54 room(s)	58 room(s)
Number of primary classes	110 class(es)	107 class(es)	107 class(es)
Number of primary teachers	117 person(s)	118 person(s)	120 person(s)
Ratio of children 6-11 yrs to school	691	628	653
Ratio of children 6-11 yrs to school room	64	70	68
Ratio of children 6-11 yrs to class	38	35	37
Ratio of children 6-11 yrs to teacher	35	32	33

Note: According to education norm, children 6-11 yrs should attend primary school, while 12-14 yrs should be in lower secondary school, but in reality this varies.

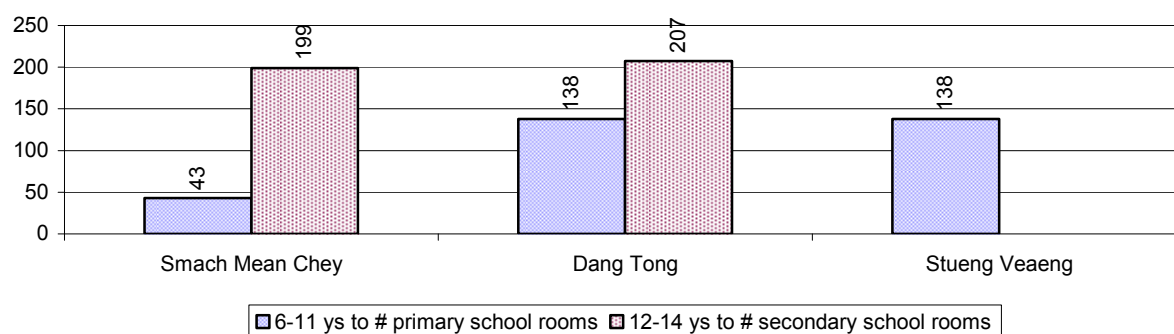
Lower Secondary School

Description	2006	2007	2008
Number of lower secondary schools	2 school(s)	2 school(s)	2 school(s)
Number of lower secondary school rooms	25 room(s)	9 room(s)	10 room(s)
Number of lower secondary classes	28 class(es)	10 class(es)	10 class(es)
Number of lower secondary teachers	53 person(s)	25 person(s)	27 person(s)
Ratio children 12-14 yrs to school	1,157	1,062	1,113
Ratio of children 12-14 yrs to school room	93	236	223
Ratio of children 12-14 yrs to class	83	212	223
Ratio of children 12-14 yrs to teacher	44	85	82

3.1.5 Ratio of 6-11 year old and 12-14 year old Children to number of Teachers, by Commune, in 2008



3.1.6 Ratio of 6-11 year old and 12-14 year old Children to number of School Rooms, by Commune, in 2008



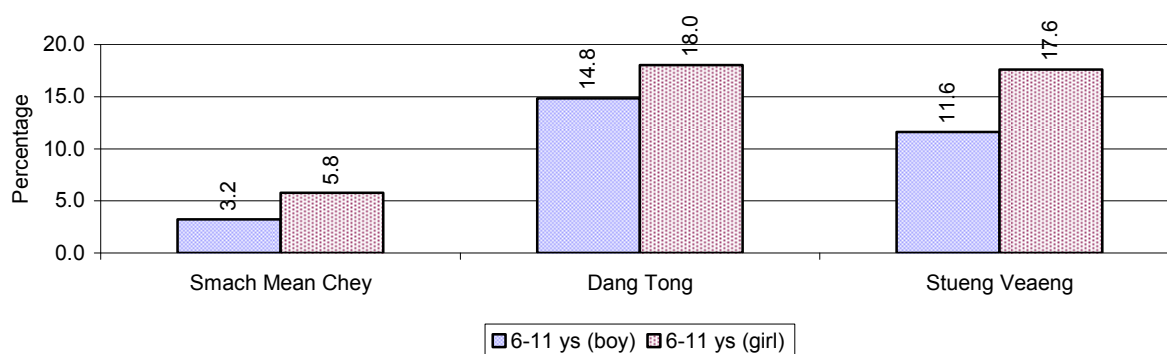
3.1.7 Enrolment status at Primary Level over 3 years

Description	2006 %	2007 %	2008	
			%	Number
Total children aged 6-11 years old	16%	15%	15%	3,917 person(s)
Total children aged 6-11 who are in school	84%	87%	89%	3,501 person(s)
Total children aged 6-11 who are not in school	16%	13%	11%	416 person(s)
Total girls aged 6-11 years old	16%	15%	15%	1,964 person(s)
Total girls aged 6-11 who are in school	84%	88%	88%	1,727 person(s)
Total girls aged 6-11 who are not in school	16%	12%	12%	237 person(s)
Total boys aged 6-11 years old	16%	15%	15%	1,953 person(s)
Total boys aged 6-11 who are in school	84%	87%	91%	1,774 person(s)
Total boys aged 6-11 who are not in school	16%	13%	9%	179 person(s)

Note 1: Percentage is calculated on the basis of the total number of children within 6-11 year age group for the first 3 rows and for the total girls and the total boys aged 6-11 yrs.

Note 2: Number of girls aged 6-11 who are in & not in school is calculated against the total number of girls aged 6-11 yrs. Number boys, 6-11 yrs who are in & not in school are calculated against the total number of boys aged 6-11 yrs.

3.1.8 Percentage of 6-11 year old Children not in School, by Commune, in 2008



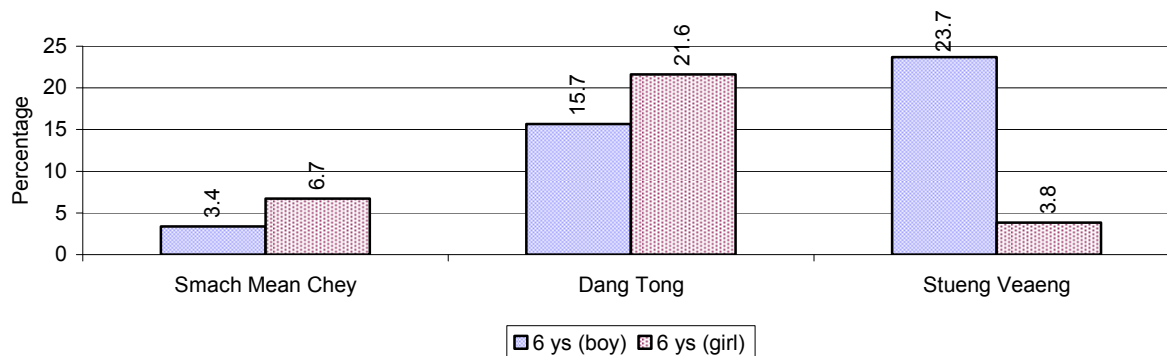
Note: calculated on the basis of the total number of children within 6-11 year age group in the commune.

3.1.9 Enrolment of 6 year old Children over 3 years

Description	2006 %	2007 %	2008	
			%	Number
Total % and number of children aged 6 years old	5%	4%	5%	1,196 person(s)
Total % of children aged 6 years old in school	78%	85%	89%	1,061 person(s)
Total % of children aged 6 years old not in school	22%	15%	11%	135 person(s)

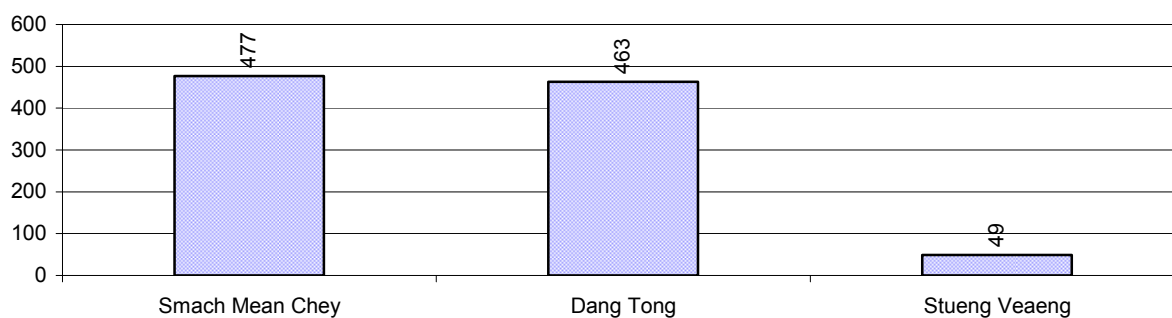
Note: First row calculated as a percentage of total population. Second and third row calculated as a percentage of the total number of 6 year olds.

3.1.10 Percentage of 6 year old Children not in School, by Commune, in 2008



Note: Calculated as a percentage of total 6 year old population

3.1.11 Number of 5 year old Children in each Commune in 2008

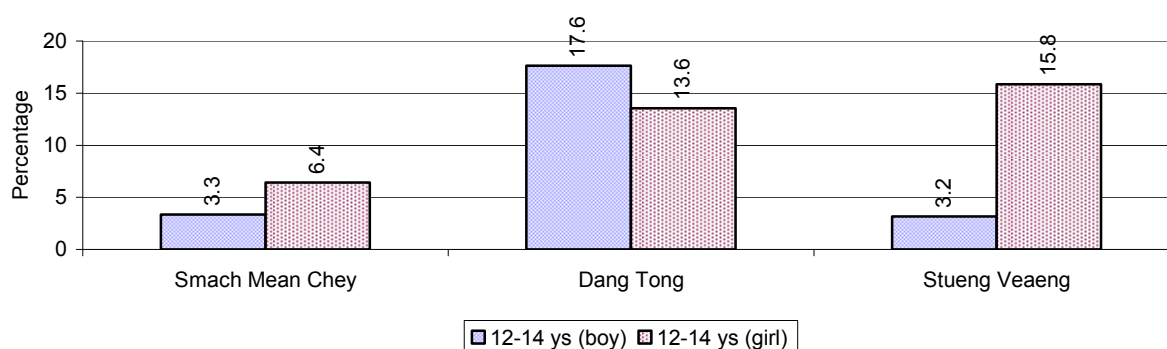


3.1.12 Enrolment at Lower Secondary Level over 3 years

Description	2006 %	2007 %	2008	
			%	Number
Total children aged 12-14 years old	9%	8%	9%	2,226 person(s)
Children aged 12-14 years old in school	83%	87%	90%	1,996 person(s)
Children aged 12-14 years old not in school	17%	13%	10%	230 person(s)
Total girls aged 12-14 years old	9%	9%	9%	1,178 person(s)
Girls aged 12-14 years old in school	82%	88%	90%	1,055 person(s)
Girls aged 12-14 years old not in school	18%	12%	10%	123 person(s)
Total boys aged 12-14 years old	9%	8%	8%	1,048 person(s)
Boys aged 12-14 years old in school	83%	85%	90%	941 person(s)
Boys aged 12-14 years old not in school	17%	15%	10%	107 person(s)

Note: Percentage is calculated on the basis of number of the total number of children within 12-14 yrs group, except for the first row of each section which is calculated on the basis of the total population.

3.1.13 Percentage of 12-14 year olds not in School, by Commune, in 2008



Note: Calculated as a percentage of the total 12-14 year old population in each commune

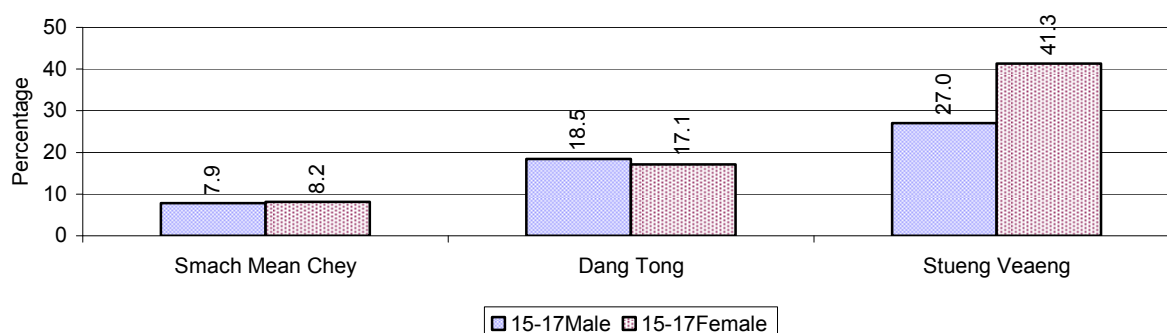
3.1.14 Upper Secondary Schools over 3 years

Description	2006	2007	2008
Number of upper secondary schools	1 school(s)	1 school(s)	1 school(s)
Number of upper secondary school rooms	12 room(s)	17 room(s)	22 room(s)
Number of upper secondary classes	12 class(es)	34 class(es)	40 class(es)
Number of upper secondary teachers	22 person(s)	67 person(s)	75 person(s)
Ratio of 15-17 yr olds to number of school	2,859	2,048	2,120
Ratio of 15-17 yr olds to number of school room	238	120	96
Ratio of 15-17 yr olds to number of classes	238	60	53
Ratio of 15-17 yr olds to number of teacher	130	31	28

3.1.15 Enrolment of 15-17 year old teenagers over 3 years

Description	2006	2007	2008
Number of teenage, 15-17 years old	2,859 person(s)	2,048 person(s)	2,120 person(s)
Number of teenage, 15-17 years old, who are not studying	819 person(s)	425 person(s)	325 person(s)
Percentage of teenage, 15-17 years old not studying	29%	21%	15%

3.1.16 Percentage of 15-17 year old Teenagers not at School, by Commune, in 2008



3.1.17 Literacy Classes as of 2008

Literacy classes	Organized by:		Other Program(s)	Total
	PDoEYS	NGOs		
Number of On-going literacy classes	0 class(es)	0 class(es)	0 class(es)	0 class(es)
Number of literacy students in on-going classes	0 person(s)	0 person(s)	0 person(s)	0 person(s)
Completed literacy class(es)	0 classes	0 classes	0 classes	0 classes
Number of literacy students that have completed literacy classes	0 person(s)	0 person(s)	0 person(s)	0 person(s)
Number of students that passed	0 person(s)	0 person(s)	0 person(s)	0 person(s)

3.1.18 Number of on-going and completed Literacy Classes, by Commune, in 2008

There were no classes in this District in 2008

3.1.19 Students of on-going & completed Literacy Classes, by Commune, in 2008

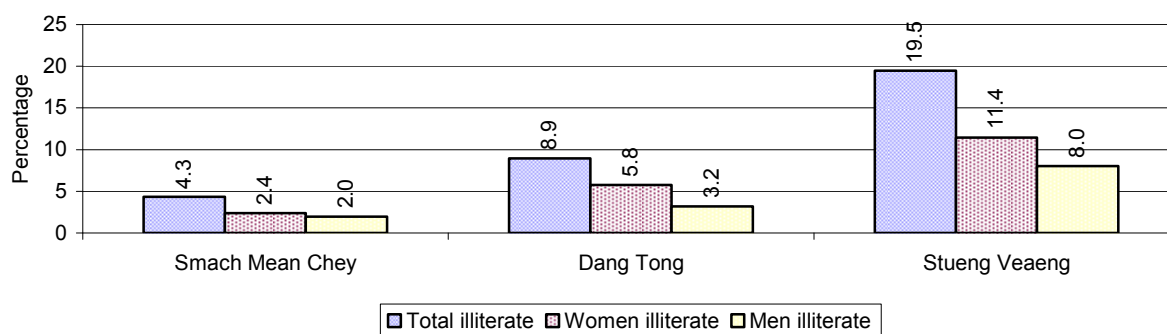
There were no students who had taken or were taking literacy classes in this District in 2008

3.1.20 Percentage of illiterate People between 15-60, over 3 years

Illiteracy Status	2006 %	2007 %	2008	
			%	Number
Illiterate people, 15-60 years old	9%	9%	8%	1,356 person(s)
Illiterate females, 15-60 years old	5%	5%	5%	828 person(s)
Illiterate people, 15-17 years old	3%	4%	4%	95 person(s)
Illiterate females, 15-17 years old	2%	2%	3%	54 person(s)
Illiterate people, 18-24 years old	9%	7%	7%	240 person(s)
Illiterate females, 18-24 years old	5%	4%	4%	153 person(s)
Illiterate people, 25-60 years old	11%	11%	10%	1,021 person(s)
Illiterate females, 25-60 years old	6%	6%	6%	621 person(s)

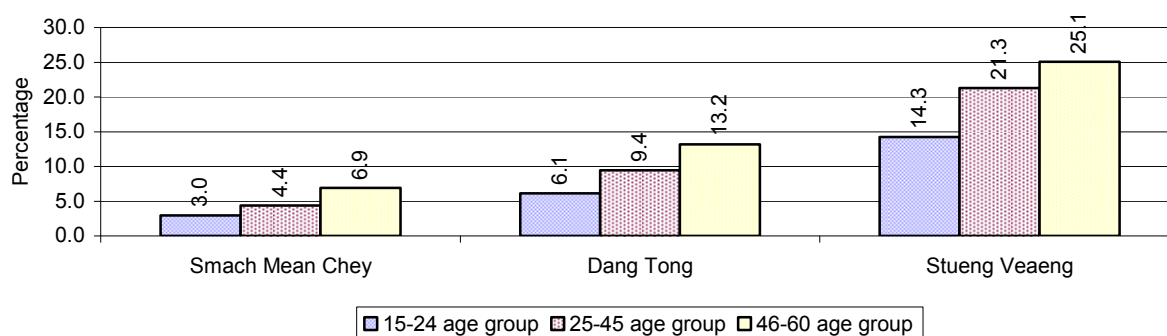
Note: Percentage is calculated on the basis of number of people in age each group.

3.1.21 Percentage illiterate People among 15-60 yrs old, by Commune, in 2008



Note: Percentages are calculated on the basis of number of people in that age group.

3.1.22 Percentage illiterate People for 15-24 yrs, 25-45 yrs and 46-60 yrs, by Commune, in 2008



Note: Percentage of illiterate people in each age group is calculated on the basis of number of people in that age group.

3.2 Health

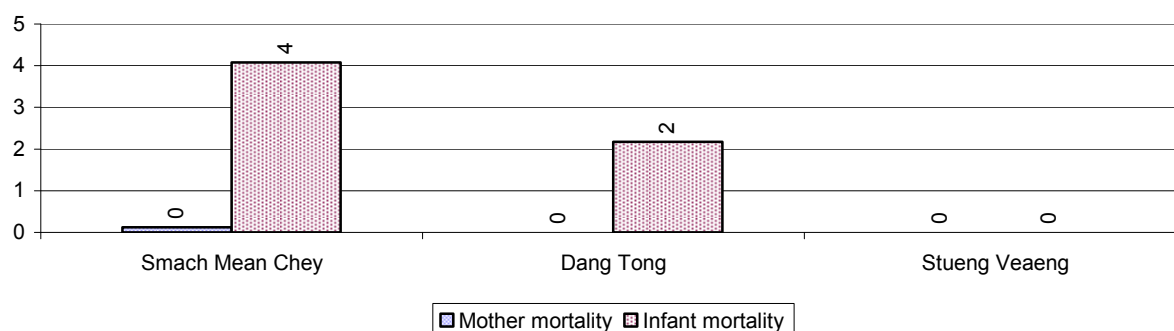
3.2.1 Health Situation of Women and Children, over 3 years

Description	2006	2007	2008
Number families with a birth during the year	280 families	266 families	244 families
Number of women who had their baby delivered by a TBA	7 person(s)	8 person(s)	14 person(s)
Percentage of women who had their baby delivered by a TBA	3 %	3 %	6 %
Number of women who had their baby delivered by a midwife	273 person(s)	258 person(s)	230 person(s)
Percentage of women had their baby delivered by a midwife	98 %	97 %	94 %
Number of mothers who died within 1 month of giving birth	1 person(s)	0 person(s)	1 person(s)
Mothers who died within 1 month of giving birth per 100,000 families having a delivery	357	0	410
Number of infants born during the year	281 person(s)	266 person(s)	244 person(s)

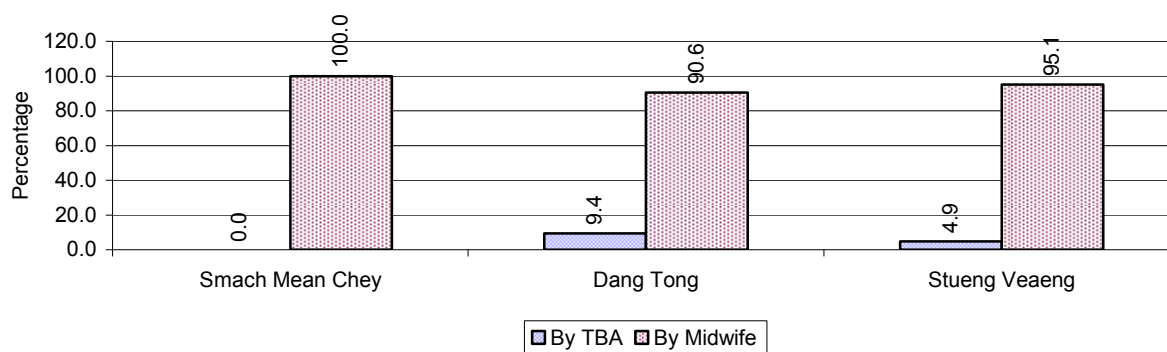
Description	2006	2007	2008
Number of Infants who died within 1 month	7 person(s)	1 person(s)	4 person(s)
Infants mortality within 1 month per 1,000 births	25	4	16
Number of children who died below the age of 5.	10 person(s)	6 person(s)	5 person(s)
Number of infants, aged 9-12 months, born during the year	184 person(s)	144 person(s)	182 person(s)
Nr. infants, aged 9-12 months, not receiving full immunization	6 person(s)	22 person(s)	10 person(s)
% of 9-12 months infants, not receiving full immunization	3 %	15 %	5 %

Note: TBA = Traditional Birth Attendant

3.2.2 Mothers dying within 0 days to 1 month of giving Birth and Infants dying within 1 month in 2008, by Commune

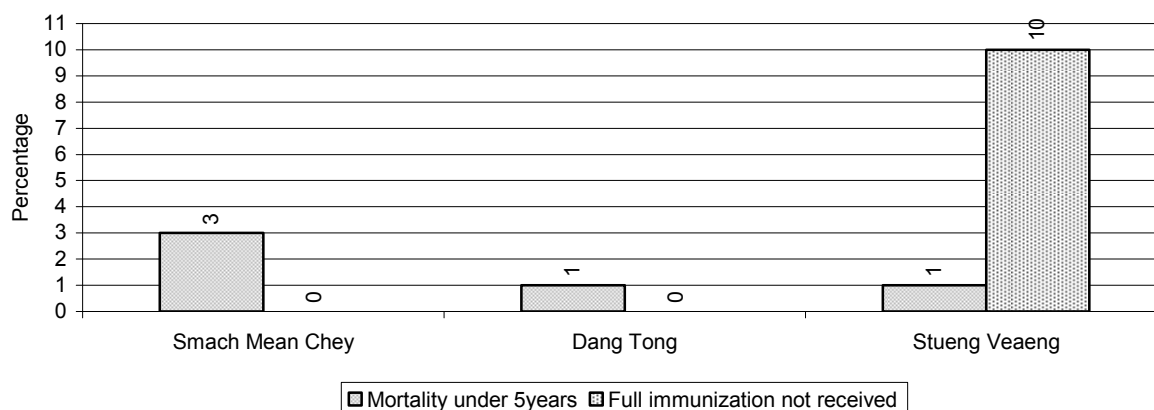


3.2.3 Percentage of Women delivering with a TBA or Midwife, by Commune



Note: Calculated as a percentage of total deliveries

3.2.4 Percentage of Children dying below 5 & of 9-12 months not receiving full Immunization, by Commune, in 2008



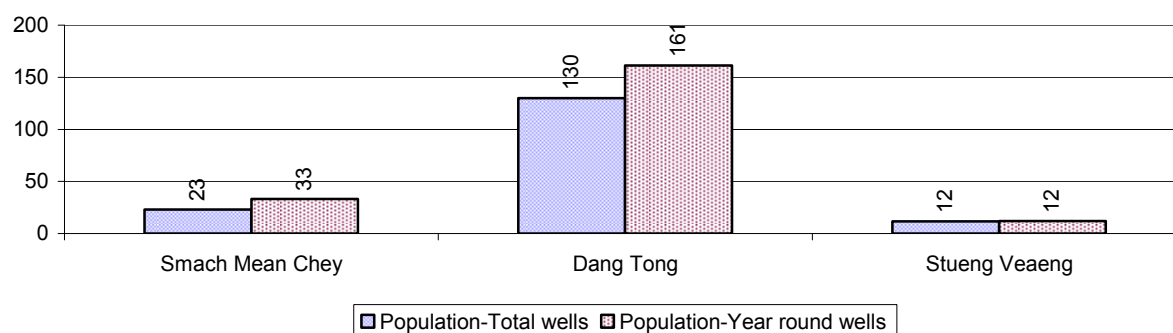
Note: Mortality rate calculated as a percentage of the total 5 year old population. Lack of immunization received calculated as a percentage of the total number 9-12 months olds there are

3.3 Water and Sanitation

3.3.1 Number of different types of Wells over 3 years

Type of wells	Number of wells by year		
	2006	2007	2008
<i>Total number of pumped or mixed wells</i>	75	280	166
Year-round usable pumped or mixed wells	66	256	81
Dry season unusable pump or mixed wells	9	24	85
Pump or mixed wells needing repair/rehabilitation	10	18	11
<i>Total number of ring wells</i>	490	539	624
Year-round usable ring wells	446	472	542
Dry season unusable ring wells	44	67	82
Ring wells needing repair/rehabilitation	20	20	26
<i>Total number of unprotected dug wells</i>	22	11	13
Year-round usable unprotected dug wells	9	9	13
Dry season unusable unprotected dug wells	13	2	0

3.3.2 Ratio of People to Wells, by Commune, in 2008

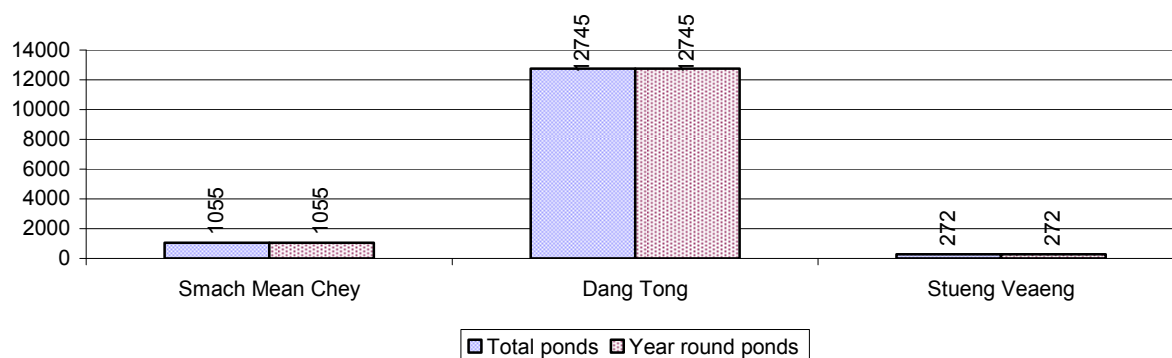


Note: Year-round wells excluding unprotected wells

3.3.3 Potable Ponds over 3 years

Type of Pond	2006	2007	2008
<i>Total number of normal-type ponds</i>	21 pond	19 pond	21 pond
Year-round usable normal-type ponds	21 pond	16 pond	21 pond
Dry season unusable normal-type ponds	0 pond	3 pond	0 pond
Normal-type ponds needing repair/rehabilitation	2 pond	2 pond	2 pond
<i>Total number of filter ponds</i>	0 pond	0 pond	0 pond
Year-round usable filter ponds	0 pond	0 pond	0 pond
Filter ponds, dry season unusable	0 pond	0 pond	0 pond
Filter ponds needing repair/rehabilitate	0 pond	0 pond	0 pond

3.3.4 Ratio of People to normal Ponds, by Commune in 2008



3.3.5 Ratio of People to Filter Ponds, by Commune, in 2008

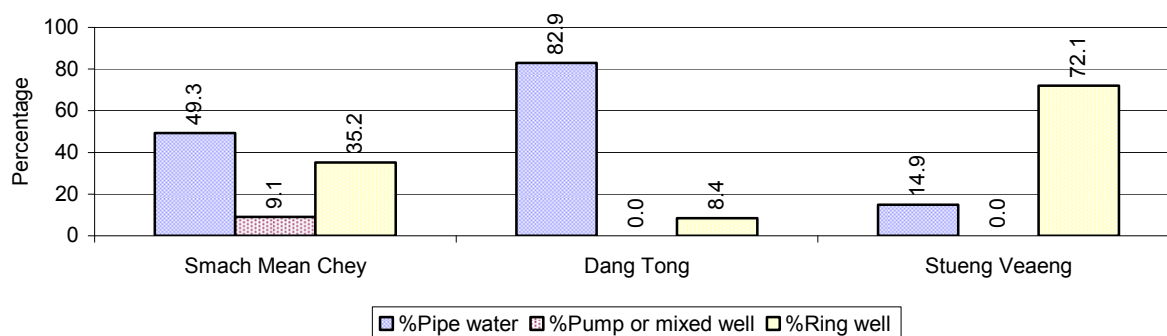
There were no filter ponds in this District in 2008

3.3.6 Source of potable Water for Households, over 3 years

Water sources	2006 %	2007 %	2008	
			%	Number
Families using water from purification system	56%	58 %	61 %	3,107 families
Families using water from pump, mixed wells	6%	8 %	4 %	187 families
Families using water from ring wells and open dug wells	30%	23 %	27 %	1,347 families
Families using water from pond	5%	10 %	7 %	369 families
Families using water from rain water storage	1%	0 %	0 %	0 families
Families using water from rivers, lakes, natural ponds and reservoirs	2%	1 %	1 %	48 families

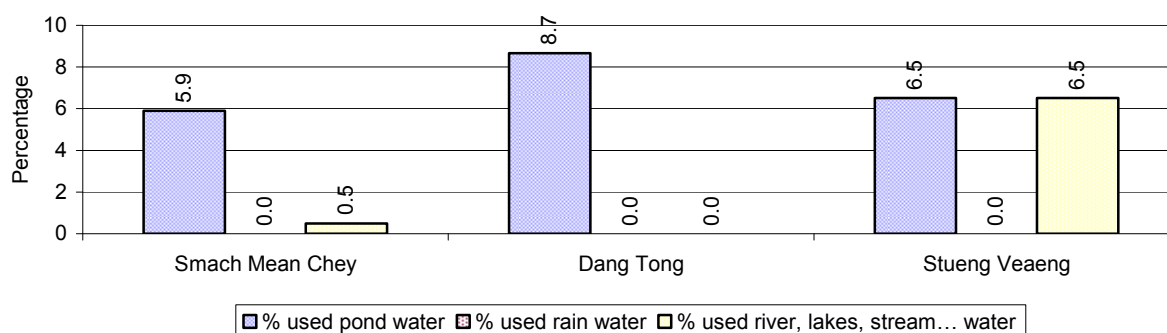
Note: Calculated as a percentage of the total number of families.

3.3.7 Percentage Families using different Water Sources, by Commune, in 2008



Note: Calculated as a percentage of the total number of families in each commune

3.3.8 Percentage Families using Water from Rain Water Storage, Ponds and natural Sources (rivers/lakes/natural ponds/reservoirs), by Commune, 2008



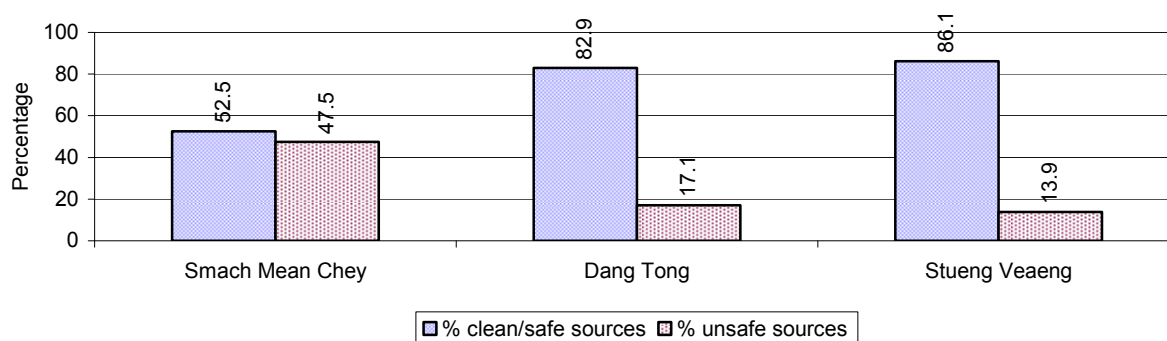
Note: Calculated as a percentage of the total number of families in each commune

3.3.9 Drinking Water Sources in the dry Season over 3 years

Percentage Families that get drinking water from:	2006	2007	2008	
	%	%	%	Number
from clean/safe sources	70 %	67 %	71 %	3,589 families
from unsafe sources	30 %	33 %	29 %	1,469 families

Note: Calculated as a percentage of the total number of families.

3.3.10 Percentage Families using safe and unsafe Water Sources in the dry Season, by Commune, in 2008



Note: Calculated as a percentage of the total number of families in each commune.

3.3.11 Drinking Water Purification by Households, over 3 years

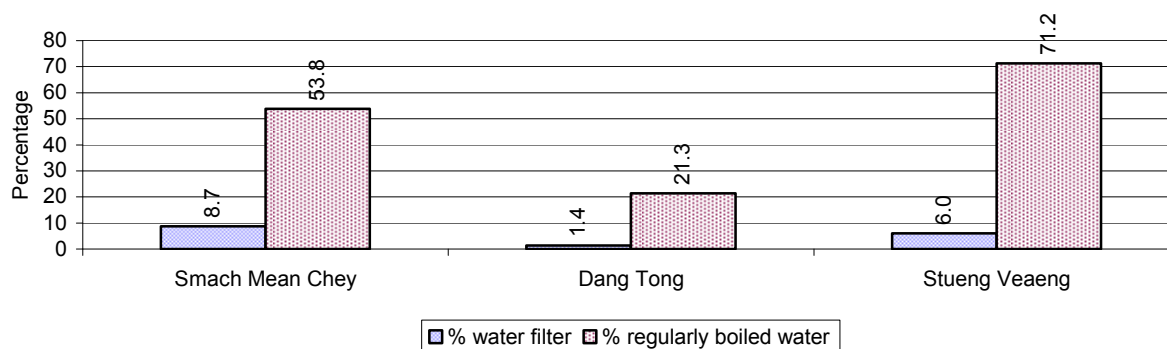
This table shows the different ways families make water safe for drinking.

Families, who:	2006	2007	2008	
	%	%	%	Number
Filter water for drinking	2%	4%	5 %	247 families
Boil water for drinking	57%	36%	40 %	2,037 families

Note: Calculated as a percentage of the total number of families

3.3.12 Percentage Families filtering Water or regularly boiling Water, by Commune, in 2008

This graph shows the different ways families make drinking water safe.



Note: Calculated on as a percentage of the total number of families in each commune.

3.3.13 Families' access to Water, over 3 years

Families access to water	2006	2007	2008	
	%	%	%	Number
Families with water at home or in less than 150m	87%	76%	87 %	4,422 families
Families with water 150m or more away from home	6%	24%	13 %	636 families

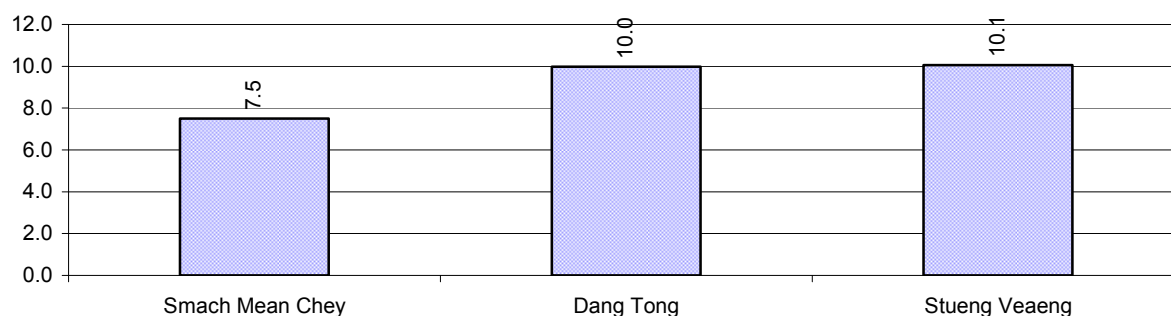
Note: Calculated as a percentage of the total number of families

3.3.14 Ratio of people to Latrines over 3 years

Description	2006 Ratio	2007 Ratio	2008	
			Ratio	Number
Ratio of people to latrines	10.4	8.8	8.8	2,955.0

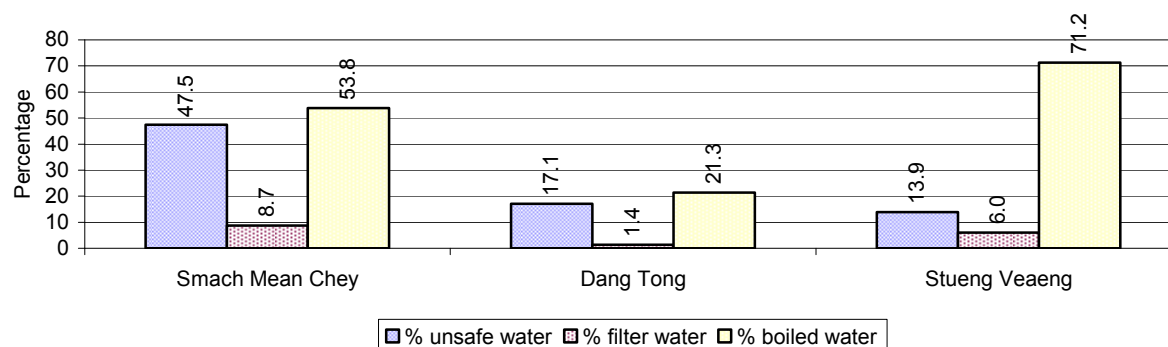
Note: Ratio calculated by dividing the number of houses with latrines by the total population

3.3.15 Ratio of People to Latrines, by Commune, in 2008



Note: Ratio calculated by dividing the number of houses with latrines by the total population in a Commune.

3.3.16 Percentage of Families drinking boiled, filtered or unsafe Water, by Commune, in 2008



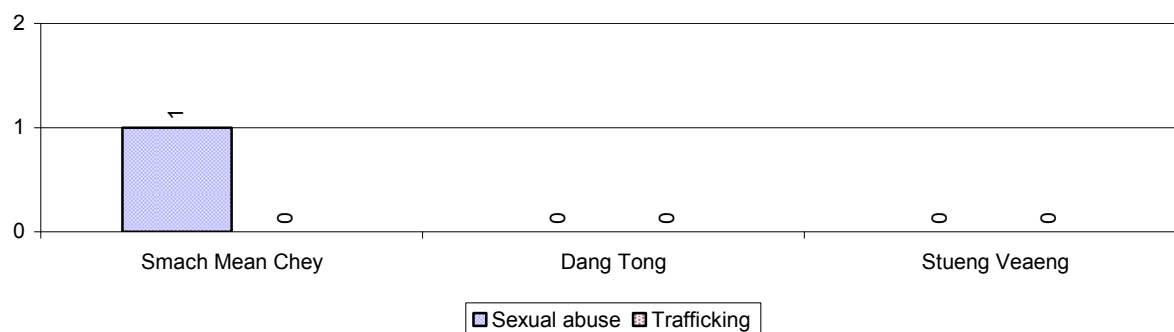
Note: Calculated as a percentage of the total number of families in each commune.

3.4 Vulnerable groups

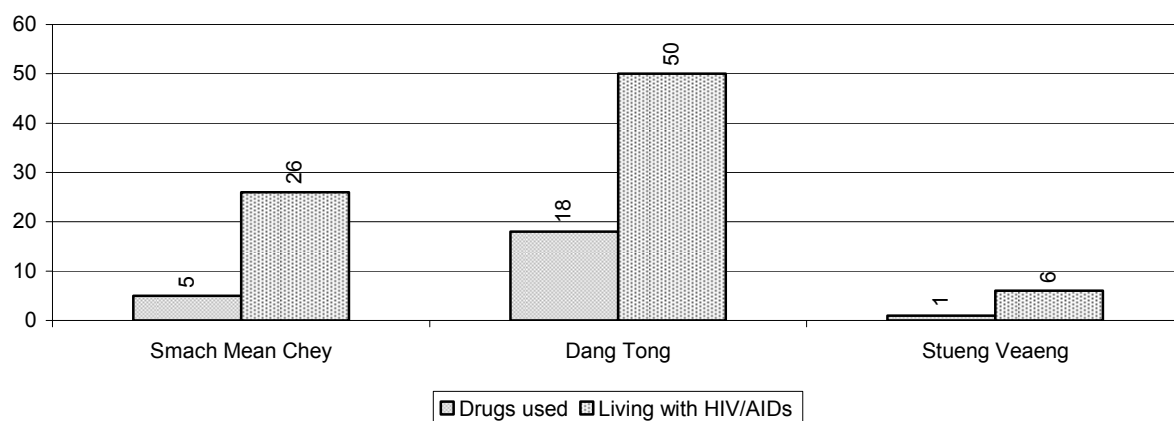
3.4.1 Vulnerable Groups in need of special Protection over 3 years

Vulnerable groups	2006	2007	2008
Victims of sexual abuse	2 person(s)	5 person(s)	1 person(s)
Victims of human trafficking	0 person(s)	0 person(s)	0 person(s)
Families with family member(s) using drugs	31 families	22 families	24 families
Families with family member(s) living with HIV/AIDS	71 families	72 families	82 families
Children under 18 yrs old whose parent died of AIDS	104 person(s)	105 person(s)	115 person(s)
Orphaned/abandoned children under 18 yrs old (all cases)	144 person(s)	139 person(s)	158 person(s)
Elderly persons without guardian	79 person(s)	66 person(s)	41 person(s)
Disabled people able to earn an income	18 person(s)	25 person(s)	21 person(s)
Disabled people unable to earn an income	8 person(s)	15 person(s)	21 person(s)
Disabled people under 18 yrs old	13 person(s)	11 person(s)	7 person(s)
Victims of natural disasters	342 families	0 families	0 families
Victims of land mines and unexploded weapons	5 person(s)	1 person(s)	1 person(s)

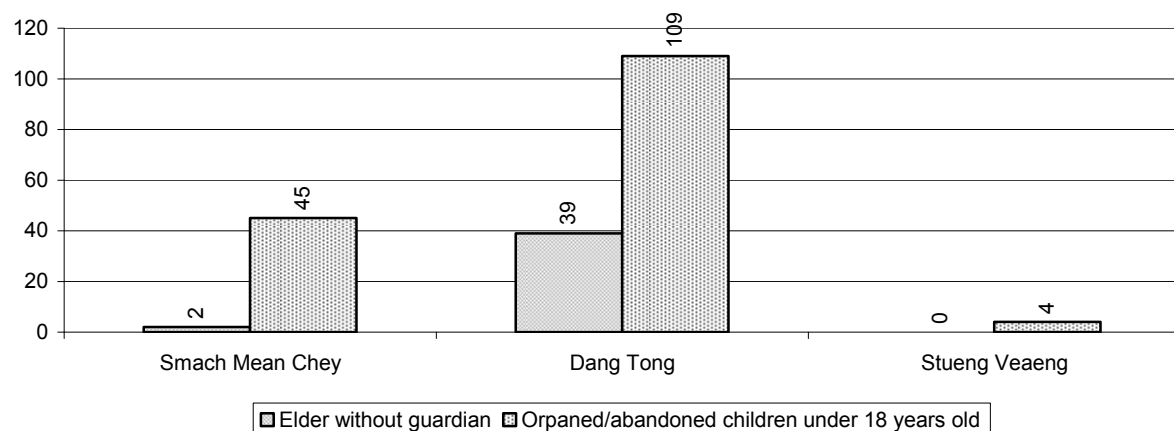
3.4.2 Registered Victims of sexual Abuse or Trafficking, by Commune, for 2008



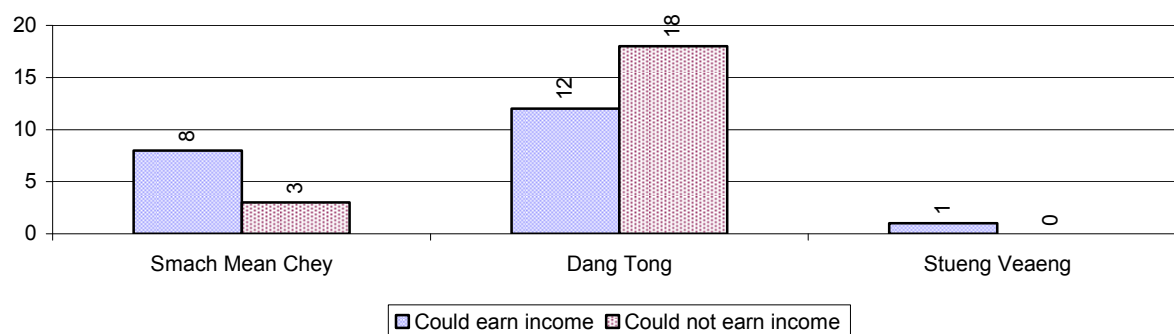
3.4.3 Registered Families with Member(s) using Drugs or living with HIV/AIDS, by Commune, for 2008



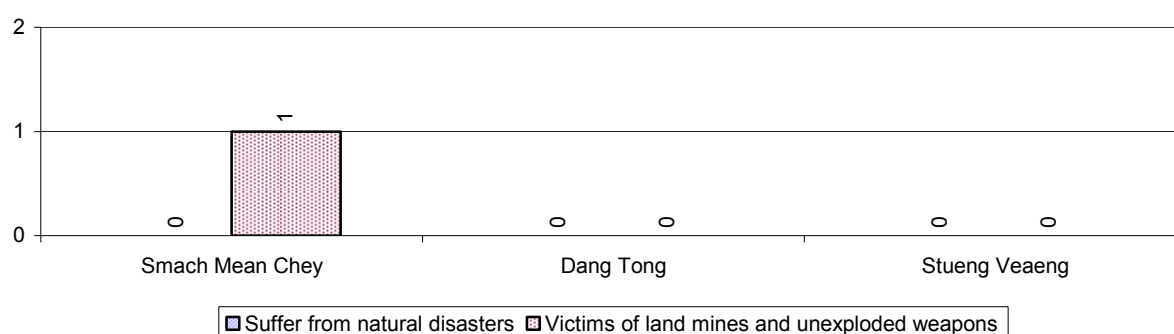
3.4.4 Elderly Persons without a Guardian and orphaned/abandoned Children under 18 years old, by Commune, for 2008



3.4.5 Number of disabled People who could or could not earn an Income, by Commune, for 2008



3.4.6 Number of Families who suffered from natural Disasters, and number of Victims of Land Mines and unexploded Weapons, by Commune, in 2008



3.5 Migration

3.5.1 Migration over 3 years

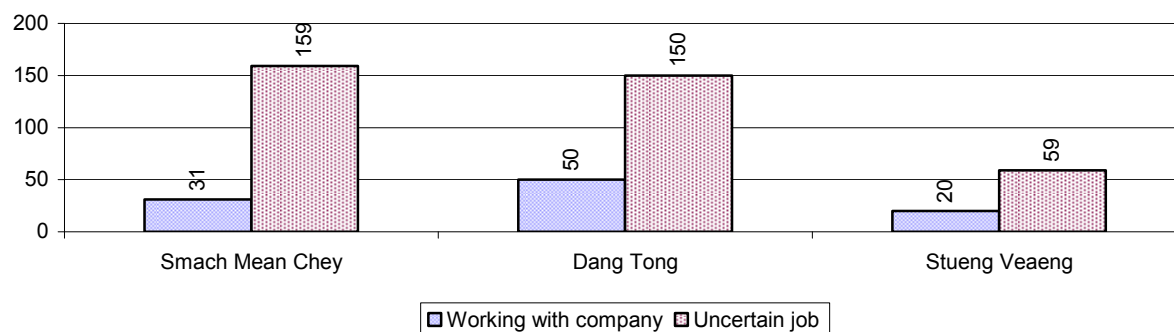
Description	2006	2007	2008
Number of families permanently in-migrated	101 families	75 families	104 families
Total number of people	497 person(s)	260 person(s)	464 person(s)
Total number of female	254 person(s)	152 person(s)	250 person(s)
Number of families permanently out-migrated	101 families	30 families	44 families
Total number of people	413 person(s)	117 person(s)	183 person(s)
Total number of female	220 person(s)	62 person(s)	91 person(s)
Number of families staying temporarily	97 families	110 families	117 families
Total number of people	326 person(s)	352 person(s)	431 person(s)
Total number of female	171 person(s)	200 person(s)	238 person(s)

3.5.2 Job Migration

Description	2006	2007	2008
Number of people migrated to work with company/factory	0%	1%	1%
Number of people migrated to work, but have uncertain jobs	2%	2%	3%

Note: Calculated as a percentage of the total population of 18-60 year olds

3.5.3 Number of People working outside their home Villages in a Company/Factory or with an uncertain Job in 2008

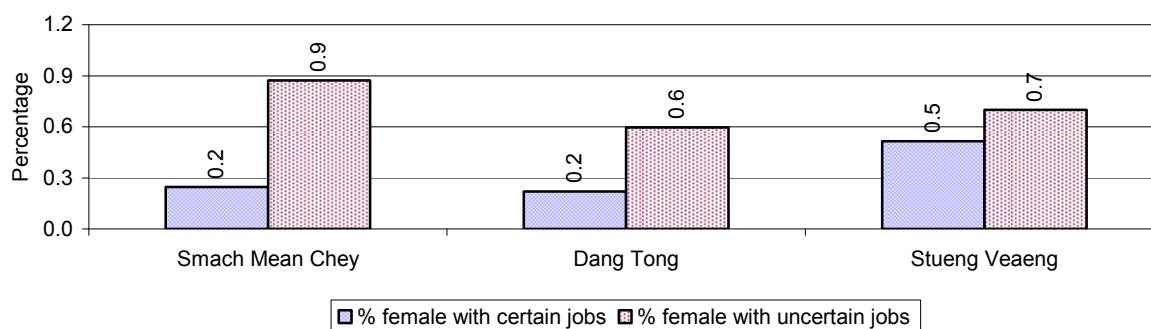


3.5.4 Female migration over 3 years

Description	2006 %	2007 %	2008	
			%	Number
Total number of migrants	1.0%	1.5%	1.8%	469 person(s)
Number of female migrants	0.5%	0.8%	1.0%	255 person(s)
Total number of migrants, who go to work with company/factory (with certain jobs)	0.2%	0.4%	0.4%	101 person(s)
Number of female migrants with certain jobs	0.1%	0.3%	0.3%	68 person(s)
Total number of migrants with uncertain jobs	0.8%	1.1%	1.4%	368 person(s)
Number of female migrants with uncertain jobs	0.4%	0.5%	0.7%	187 person(s)

Note: Calculated as a percentage of the total population

3.5.5 Percentage female Migrants with certain and uncertain Jobs, by Commune, in 2008



Note: Calculated as a percentage of the total population of the commune

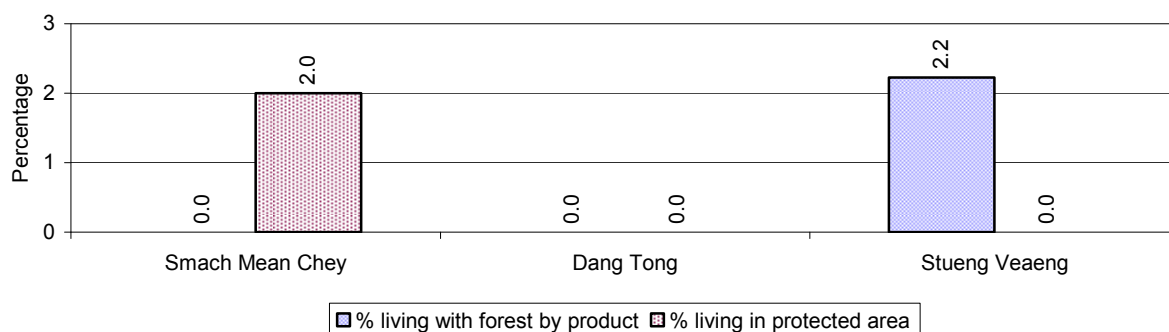
4 Natural Resources and Environment (NRE)

4.1 Families involved with NRE issues over 3 years

Description	2006 %	2007 %	2008	
			%	Number
Families living with forest by products	1 %	0 %	0 %	13 families
Families living in a protected area	1 %	2 %	1 %	41 families
Houses with access to garbage collection service	3 %	11 %	14 %	724 families
Families affected by environmental pollution	13 %	12 %	1 %	75 families
Families using chemical fertilizer	1 %	1 %	1 %	68 families
Families using chemical pesticide	1 %	2 %	1 %	70 families

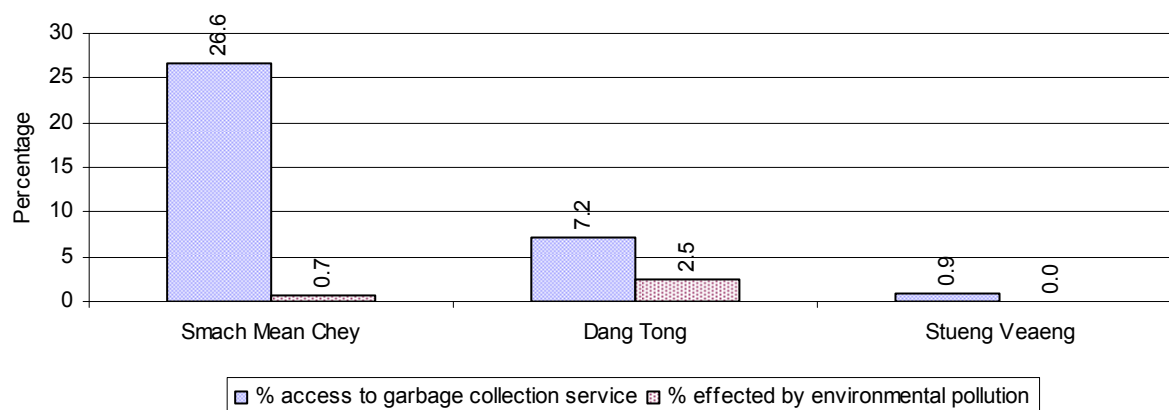
Note: Calculated as a percentage of the total number of families

4.2 Percentage of Families involved with Natural Resource issues, by Commune, for 2008



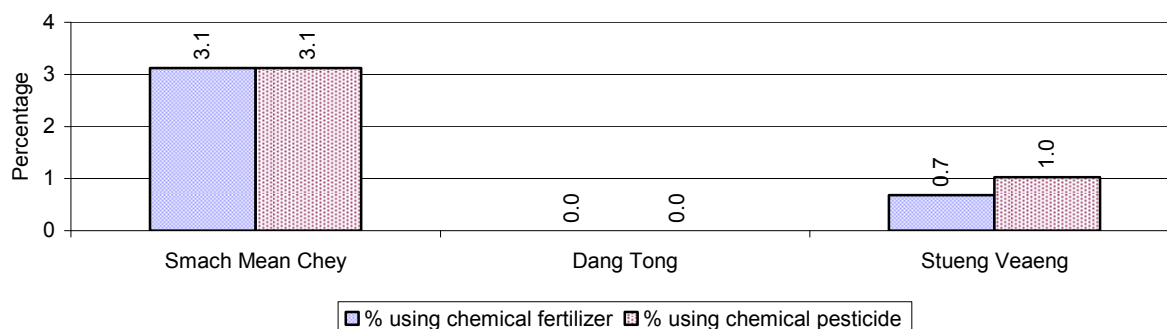
Note: Calculated as a percentage of the number of families in each commune

4.3 Percentage Houses with access to Garbage collection and Families affected by environmental Pollution, by Commune, for 2008



Note: Garbage collection is calculated as a percentage of the total number of houses in each commune and families affected by environmental pollution is calculated as a percentage of the total number of families in each commune.

4.4 Percentage Families using chemical Fertilizer and chemical Pesticides, by Commune, for 2008



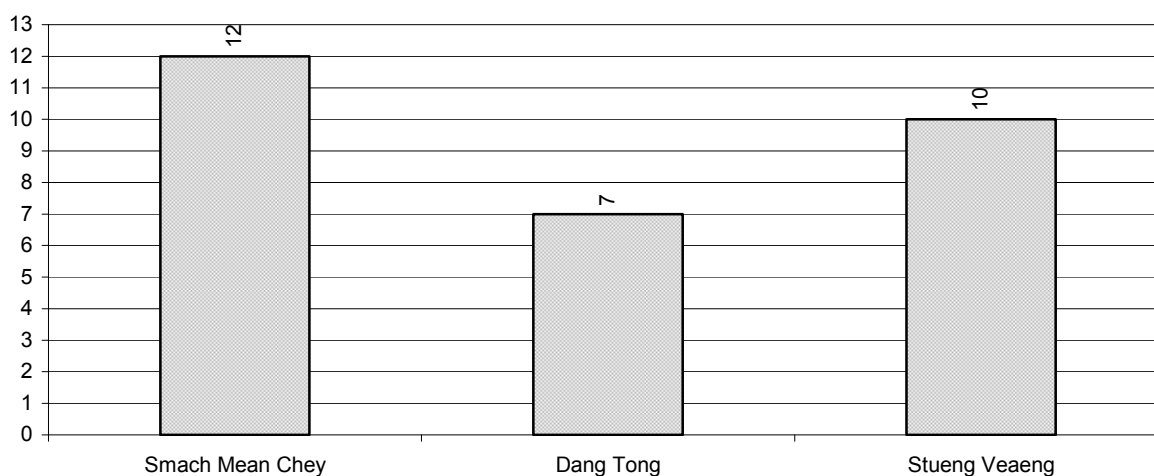
Note: Calculated as a percentage of the total number of families in each commune

5 Administration and Security

5.1 Birth Registration across 3 years

Description	2006	2007	2008
Number of infants to be registered	274 person(s)	265 person(s)	240 person(s)
Number of unregistered infants the year	81 person(s)	108 person(s)	29 person(s)
Percentage of infants unregistered	30 %	41 %	12 %

5.2 Number of unregistered Infants born in 2008, by Commune

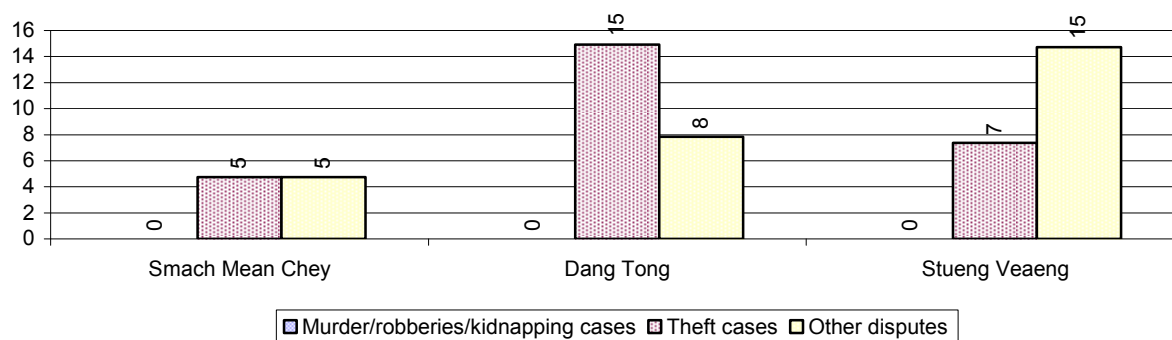


5.3 Registered criminal Cases over 3 years

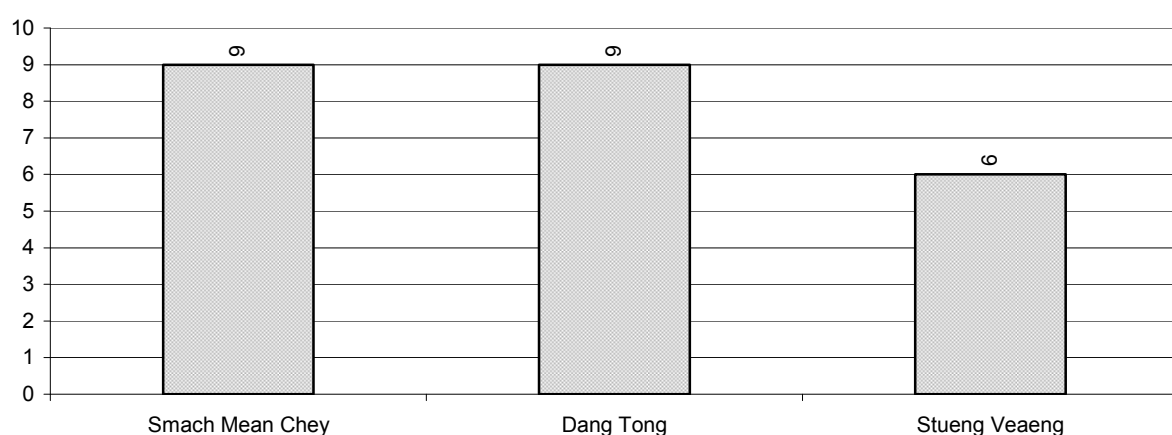
Description	2006	2007	2008
Murders, robberies and kidnapping cases	2 case(s)	2 case(s)	0 case(s)
Theft cases	23 case(s)	29 case(s)	26 case(s)
land dispute cases	23 case(s)	21 case(s)	24 case(s)
Other disputes cases	23 case(s)	26 case(s)	19 case(s)

Note: this reflects only registered criminal cases

5.4 Registered criminal Cases per 10,000 people, by Commune, for 2008



5.5 Number of registered Land Disputes, by Commune, in 2008

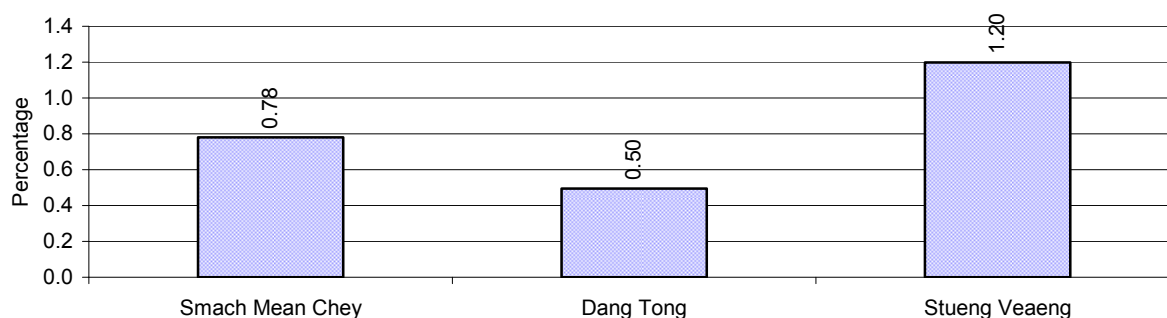


6 Gender

6.1 Registered Domestic Violence over 3 years

Description		2006	2007	2008
Families experiencing domestic violence		58 families	40 families	35 families(s)
% families experiencing domestic violence		1 %	1 %	1 %
Domestic violence cases reported by village chiefs		58 case(s)	28 case(s)	43 case(s)
Type	Physical violence	48 case(s)	26 case(s)	39 case(s)
	Sexual violence	1 case(s)	2 case(s)	2 case(s)
	Mental violence	5 case(s)	0 case(s)	2 case(s)
	Household economic violence	4 case(s)	0 case(s)	0 case(s)
Number of administrative decisions on domestic violence		48 case(s)	8 case(s)	16 case(s)
% of administrative decisions on domestic violence		83 %	29 %	37 %

6.2 Percentage of registered cases of Families experiencing domestic Violence, by Commune, in 2008



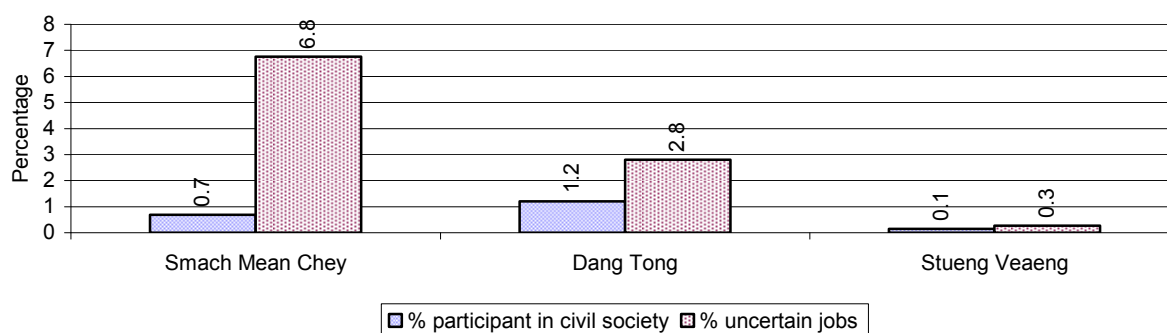
Note: Calculated as a percentage of the total number of families in each commune

6.3 Women's involvement over 3 years

Description	2006 %	2007 %	2008	
			%	Number
People participating in civil society	1%	0%	1%	357 person(s)
Women participating in civil society	1%	0%	1%	231 person(s)
People, 18-60 yrs, with uncertain/irregular jobs	9%	8%	8%	1,179 person(s)
Women, 18-60 yrs, with uncertain/irregular jobs	5%	4%	4%	571 person(s)

Note: Participation can be in NGOs, CBOs, credit groups, women's unions, parties and other civil society organizations. The first section is calculated as a percentage of the total population. The second section is calculated as a percentage of the total 18-60 year old population.

6.4 Percentage of Female Participants in Civil Society and of 18-60 year women with uncertain Jobs, by Commune, in 2008



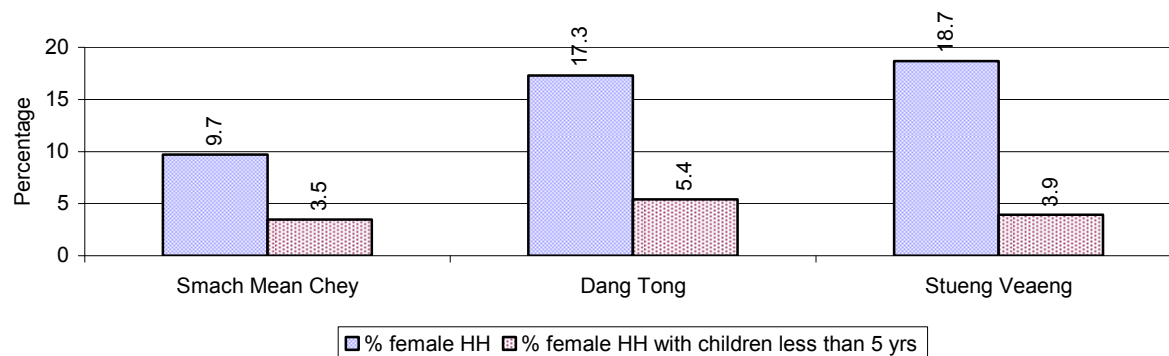
Note: Percentage of female participants in civil society is calculated as a percentage of the total population per commune. The percentage of 18-60 years old women with uncertain jobs is calculated as a percentage of the total 18-60 year old population per commune.

6.5 Female-headed Households over 3 years

Families with:	2006 %	2007 %	2008	
			%	Number
Households in which a woman is the family head	20%	18%	14%	727 families
Households in which a woman is the family head with children of less than 5 yrs	6%	5%	4%	225 families

Note: Calculated as a percentage of the total number of families

6.6 Percentage female-headed Households and with Children of less than 5 years old, by Commune, in 2008



Note: Calculated as a percentage of the total number of families in each commune
HH: Headed Household

7 Indigenous People in the District

7.1 Ethnic Minorities in the District over 3 years

Race of indigenous	2006		2007		2008	
	# families	# population	# families	# population	# families	# population
Phnong	0 families	0 person(s)	0 families	0 person(s)	0 families	0 person(s)
Kouy	0 families	0 person(s)	0 families	0 person(s)	0 families	0 person(s)
Stieng	0 families	0 person(s)	0 families	0 person(s)	0 families	0 person(s)
Mil	0 families	0 person(s)	0 families	0 person(s)	0 families	0 person(s)
Kroal	0 families	0 person(s)	0 families	0 person(s)	0 families	0 person(s)
Thmorn	0 families	0 person(s)	0 families	0 person(s)	0 families	0 person(s)
Khaonh	0 families	0 person(s)	0 families	0 person(s)	0 families	0 person(s)
Tompouonn	0 families	0 person(s)	0 families	0 person(s)	0 families	0 person(s)
Charay	0 families	0 person(s)	0 families	0 person(s)	0 families	0 person(s)
Kroeung	0 families	0 person(s)	0 families	0 person(s)	0 families	0 person(s)
Kavet	0 families	0 person(s)	0 families	0 person(s)	0 families	0 person(s)
Saouch	0 families	0 person(s)	0 families	0 person(s)	0 families	0 person(s)
Lun	0 families	0 person(s)	0 families	0 person(s)	0 families	0 person(s)
Kachak	0 families	0 person(s)	0 families	0 person(s)	0 families	0 person(s)
Praov	0 families	0 person(s)	0 families	0 person(s)	0 families	0 person(s)
Others	0 families	0 person(s)	0 families	0 person(s)	0 families	0 person(s)
Total	0 families	0 person(s)	0 families	0 person(s)	0 families	0 person(s)

Note: "Others" refer to other ethnic groups which are not listed.

7.2 Other Minorities in the District over 3 years

Minority	2006		2007		2008	
	# families	# population	# families	# population	# families	# population
Khmer Islamic	1,026 families	4,989 person(s)	910 families	5,088 person(s)	957 families	5,199 person(s)
Vietnamese	55 families	339 person(s)	55 families	326 person(s)	58 families	352 person(s)
Laos	0 families	0 person(s)	0 families	0 person(s)	0 families	8 person(s)

Note: Number of indigenous and minority population are additional data, so some village may not recorded.

SECTION C: PLANS AND PROJECTS

8 Priorities and Plans

8.1 Priorities of Commune Councils for 2009 in the District by Sector

The District Priority Activity Matrix (DPAM) data are taken from the CDPD. The DPAM is used for the District Integration Workshop (DIW), to show what kind of projects the commune has proposed in their Commune Investment Plan (CIP) for 2009. Donors, departments and other agencies then consider which projects they want to support and which projects they are not interested in. This results in Temporary Agreements between the Commune Council and the Supporter (NGO, Department, private donor, etc), as shown in table 8.2

No.	Project Name	Smach Mean Chey	Dang Tong	Stueng Veang	Req.Project
		90401	90402	90403	Total
Economic					
1	Compost fertilizer training			3 training	1
2	Mixed farming system training			3 training	1
3	Mushroom growing training		2 training		1
4	Animal raising training		2 training	2 training	3
5	Pig raising training			10 Head	1
6	Rice seed request			600 Kg	1
7	Agricultural tools request			5 set	2
8	Chemical fertilizer request			3200 Kg	1
9	Road maintenance committee		4 Team	2 Team	2
10	Laterite/natural gravel road construction	2 place			1
11	Culvert construction	8 place			1
12	Asphalt road construction		2 place		1
13	Mass concrete road construction	1 place	3 km	2834 m	6
14	Laterite/natural gravel road repairing	5 place	1622 km	1470 m	3
15	Culvert repairing			50 m	3
16	Canal construction	1 place	1 m		2
17	Canal repairing			436 m	2
18	Dam repairing			1050 m	1
19	Water gate repairing			4 place	1
20	Cash credit			9 person	1
21	Livestock bank		60 Head		2
22	Saving group association strengthening		12 time		2
23	Tourist zone management committee establishing/ strengthening	1 Fishing			1

District Data Book 2009: Development Plans and Projects

		Smach Mean Chey	Dang Tong	Stueng Veang	Req.Project
		Community			
24	Electricity supply			3 Line	1
Social					
1	Reproductive health awareness education	48 time	24 training	6 training	3
2	HIV/AIDS awareness education	48 time	2 training	2 training	3
3	Children immunization provision	10 time			1
4	Latrine construction		610 toilet	8 toilet	2
5	Sanitation day campaign organizing		4 training		1
6	Sanitation education			2 training	1
7	Commune health center construction			1 building	1
8	Water supply		1 Line	100 house	2
9	Literacy class	14 class	10 class	2 class	3
10	School building			2 building	1
11	Kindergarten school construction/repair	2 class			1
12	Motivating pupil's parents for school enrollment	51 time	4 training	2 training	3
13	Parent's school support committee		4 Team	2 Team	2
14	Scholarship provision to poor pupils		900 person	20 person	2
15	Vocational training			2 training	1
16	Bicycle/motorcycle/radio repairing skill training		2 training		1
17	Vegetable food processing training			3 training	1
18	Agricultural products processing/craft technique		2 training	1 training	3
19	Electric equipment repair skill training	1 training	2 training		2
20	Youth rehabilitation/education center construction			1 place	1
21	Artificial limbs/handcart provision/repair			9 person	1
22	Food/materials support to disabled family			9 person	1
23	Widows family assistance/support			25 person	1
24	Elderly people support			68 person	1
NREM					
1	Environmental awareness and law education		2 Time		1
2	Fishery law education	1 time			1
3	Organizing environment day			2 training	1
4	NREM education campaign			2 training	1
5	NREM strengthening	1 time			1
6	Illegal fishing prevention			2 training	1

District Data Book 2009: Development Plans and Projects

		Smach Mean Chey	Dang Tong	Stueng Veang	Req.Project
7	Drainage system rehabilitation	3 Line			1
8	Sewage culvert system construction/rehabilitation		2 place		1
9	Waste dumping creation/improvement		1 place		1
10	Public rubbish bin sitting		2750 Garbage bin	552 Garbage bin	2
11	Waste collection service creation/improvement		2 set	2 set	2
12	Sewage canal construction/rehabilitation	2 place			1
13	Market/urban place sanitation control	5 time			1
Administration and Security					
1	Local planning system strengthening		3 training		1
2	Land law dissemination		3 training	2 training	2
3	Social land concession project		25 family	20 ha	2
4	People guard activities formation/strengthening		2 Team	12 person	2
5	Drug and related law education	5 time	4 training		2
6	Drug business/use prevention			2 training	1
7	Temporary dwellers management/control			2 training	1
8	Fire prevention and fighting education		2 set	2 set	2
9	Drug abuse treatment center creation		1 place		1
10	Traffic law and public order dissemination			2 training	1
Gender					
1	Women vocational training			2 training	1
2	Tailor skill training		2 training		1
3	Food cooking/processing skill training	1 training	2 training		2
4	Lady makeup/hair dressing skill training	1 training	2 training		2
5	Vine/rattan/leaf/mat weaving skill training	1 training			1
6	Law against domestic violence dissemination	5 time	12 training	2 training	3
7	Law against trafficking dissemination		3 training		1
8	Trafficking of women/children control activity strengthening			2 training	1
9	Children interview/survey for protection purpose			2 training	1

Source: CDPD – District Priority Matrix

8.2 Temporary Agreements by Commune, for 2009²

At the District Integration Workshop (DIW) the Supporters (donors, agencies, private donors, NGOs, etc.) identify which projects/activities they would like to support or they put forward their own projects to be implemented in a particular commune. Once there is agreement between Commune Councils and Supporters on specific projects a **Temporary Agreement** is signed by the commune and the Supporter to show their mutual commitment to the identified projects/activities.

It is important to keep in mind that such Temporary Agreements do not necessarily result in implementation.

8.2.1 Temporary Agreements for 2009 as per DIW 2008 for Commune: Smach Mean Chey

Commune GIS	Commune	Temporary Agreements				Supporter	Funding Source	Listed in CIP before DIW
		Project Name	Quantity	Unit	Est.Cost (K.Riels)			
Economic								
90401	Smach Mean Chey	Production marketing dissemination	1	time	1200	WildAid		<input type="checkbox"/>
90401	Smach Mean Chey	Budget management dissemination training	1	time	1200	WildAid		<input type="checkbox"/>
90401	Smach Mean Chey	Livestock vaccination and disease curing	1	time	0	Department of Agriculture Forestry and Fisheries		<input type="checkbox"/>
90401	Smach Mean Chey	Sewage canal rehabilitation	3300	m3	40020000	Department of Water Resources and Meteorology	PIF	<input type="checkbox"/>
90401	Smach Mean Chey	Pesticide spraying support	1	time	0	Department of Agriculture Forestry and Fisheries		<input type="checkbox"/>
Social								
90401	Smach Mean Chey	Vitamin A and deworming pills supply to children	1	time	0	Department of Health		<input type="checkbox"/>
90401	Smach Mean Chey	Malaria, HIV/AIDS, sexual disease, tuberculosis, bird flue and nutrition education	1	Time	0	Department of Health		<input type="checkbox"/>
90401	Smach Mean Chey	Home based assistant group for orphan and vulnerable children support	12	Time	0	CARE International in Cambodia		<input type="checkbox"/>
90401	Smach Mean Chey	Breastfeeding world week organizing	1	Time	0	Department of Health		<input type="checkbox"/>
90401	Smach Mean Chey	World TB combat week organizing	1	Time	0	Department of Health		<input type="checkbox"/>

² Not all the data from the CDPD has been translated to English, this has resulted in some cells in the TA tables being blank.

District Data Book 2009: Development Plans and Projects

Commune GIS	Commune	Temporary Agreements				Supporter	Funding Source	Listed in CIP before DIW
		Project Name	Quantity	Unit	Est. Cost (K.Riels)			
90401	Smach Mean Chey	DOTS strategy implementation to cure TB	6	Time	0	Department of Health		<input type="checkbox"/>
90401	Smach Mean Chey	TBA meeting	4	Time	0	Department of Health		<input type="checkbox"/>
90401	Smach Mean Chey	Distribution workers meeting support	12	Time	0	Department of Health		<input type="checkbox"/>
90401	Smach Mean Chey	HIV/AIDS world day organizing	1	Time	0	Department of Health		<input type="checkbox"/>
90401	Smach Mean Chey	Health center management committee meeting	6	time	0	Department of Health		<input type="checkbox"/>
90401	Smach Mean Chey	TB education at upper secondary school	1	Time	0	Department of Health		<input type="checkbox"/>
90401	Smach Mean Chey	HIV/AIDS awareness education	1	time	0	Department of Health		✓
90401	Smach Mean Chey	Reproductive health awareness education	1	time	0	Department of Health		✓
90401	Smach Mean Chey	Children immunization provision	1	time	0	Department of Health		✓
90401	Smach Mean Chey	Electric equipment repair skill training	1	training	12000	Department of Labor and Vocational Training	PIF	✓
90401	Smach Mean Chey	Reproductive health awareness education	6	training	1200	Provincial Local Administration Unit		✓
90401	Smach Mean Chey	HIV/AIDS awareness education	1	training	0	Provincial Office of Parliament and the Senate relation		✓
90401	Smach Mean Chey	Village health worker meeting	12	Time	0	Department of Health		<input type="checkbox"/>
90401	Smach Mean Chey	DOTS implementation watch meeting support	12	Time	0	CARE International in Cambodia		<input type="checkbox"/>
90401	Smach Mean Chey	Dengue fever outbreak control activities	2	Time	0	CARE International in Cambodia		<input type="checkbox"/>
90401	Smach Mean Chey	Village service delivery mission support	12	Time	0	CARE International in Cambodia		<input type="checkbox"/>
90401	Smach Mean	Health education, maternal health care	4	Time	0	CARE International in		<input type="checkbox"/>

District Data Book 2009: Development Plans and Projects

Commune GIS	Commune	Temporary Agreements				Supporter	Funding Source	Listed in CIP before DIW
		Project Name	Quantity	Unit	Est.Cost (K.Riels)			
	Chey					Cambodia		
90401	Smach Mean Chey	Breastfeeding world week organizing	1	Time	0	CARE International in Cambodia		<input type="checkbox"/>
90401	Smach Mean Chey	Baby care skills training to TBA	1	Time	0	CARE International in Cambodia		<input type="checkbox"/>
90401	Smach Mean Chey	Tuberculosis cases searching and monitoring	12	Time	0	Department of Health		<input type="checkbox"/>
90401	Smach Mean Chey	Tuberculosis cases searching within community	4	Time	0	CARE International in Cambodia		<input type="checkbox"/>
90401	Smach Mean Chey	HIV/AIDS education during water festival	1	time	0	Department of Health		<input type="checkbox"/>
90401	Smach Mean Chey	HIV/AIDS carrier home based attendant group support through monk and village chief	1	Time	0	CARE International in Cambodia		<input type="checkbox"/>
90401	Smach Mean Chey	HIV/AIDS carrier home based support group	12	Time	0	CARE International in Cambodia		<input type="checkbox"/>
90401	Smach Mean Chey	Reproductive health education	4	Time	0	CARE International in Cambodia		<input type="checkbox"/>
90401	Smach Mean Chey	HIV/AIDS peer education training	12	Time	0	CARE International in Cambodia		<input type="checkbox"/>
90401	Smach Mean Chey	HIV/AIDS carrier home based care	1	time	0	Department of Health		<input type="checkbox"/>
90401	Smach Mean Chey	Latrine use education training	1	training	0	Department of Rural Development		<input type="checkbox"/>
90401	Smach Mean Chey	Latrine construction materials supply	10	set	0	Department of Rural Development		<input type="checkbox"/>
90401	Smach Mean Chey	Peer HIV/AIDS quarterly meeting	4	Time	0	CARE International in Cambodia		<input type="checkbox"/>
NREM								
90401	Smach Mean Chey	Fishery law education	1	training	0	Provincial Office of Parliament and the Senate relation		✓
90401	Smach Mean Chey	Fishery law education	1	time	1200	WildAid		✓
90401	Smach Mean	NREM strengthening	1	time	1200	WildAid		✓

District Data Book 2009: Development Plans and Projects

Commune GIS	Commune	Temporary Agreements				Supporter	Funding Source	Listed in CIP before DIW
		Project Name	Quantity	Unit	Est. Cost (K.Riels)			
	Chey							
90401	Smach Mean Chey	Forestry law dissemination	1	time	800	WildAid		<input type="checkbox"/>
90401	Smach Mean Chey	Sewage canal construction/rehabilitation	1	place	0	Department of Water Resources and Meteorology	PIF	✓
90401	Smach Mean Chey	NREM strengthening	2	training	0	Department of Environment	PIF	✓
Administration and Security								
90401	Smach Mean Chey	Traffic law dissemination	1	training	0	Provincial Office of Parliament and the Senate relation		<input type="checkbox"/>
90401	Smach Mean Chey	Laws dissemination and legal consultation services	2	time	0	Legal Aid of Cambodia		<input type="checkbox"/>
90401	Smach Mean Chey	Cadastral law dissemination	1	time	800	WildAid		<input type="checkbox"/>
90401	Smach Mean Chey	Cadastral law dissemination	1	training	1000	Department of Land Management, Urban Planning & Construction		<input type="checkbox"/>
90401	Smach Mean Chey	Drug and related law education	1	training	0	Provincial Office of Parliament and the Senate relation		✓
Gender								
90401	Smach Mean Chey	Law against domestic violence dissemination	6	training	800	Provincial Local Administration Unit		✓
90401	Smach Mean Chey	CC focal point and female leader forum support	1	training	0	Department of Women	PIF	<input type="checkbox"/>
90401	Smach Mean Chey	Gender mainstreaming strengthening meeting to CWCC	1	training	0	Department of Women	PIF	<input type="checkbox"/>
90401	Smach Mean Chey	Report writing and planning formulation strengthening for CWCC	1	training	0	Department of Women	PIF	<input type="checkbox"/>

8.2.2 Temporary Agreements for 2009 as per DIW 2008 for Commune: Dang Tong

Commune GIS	Com mune	Temporary Agreements				Supporter	Funding Source	Listed in CIP befor DIW
		Project Name	Quantity	Unit	Est.Cost (K.Riels)			
Economic								
90402	Dang Tong	Production marketing dissemination	1	time	1200	WildAid		<input type="checkbox"/>
90402	Dang Tong	Budget management dissemination training	1	time	1200	WildAid		<input type="checkbox"/>
90402	Dang Tong	Animal raising training	1	training	0	Department of Agriculture Forestry and Fisheries	PIF	✓
90402	Dang Tong	Livestock vaccination and disease curing	1	time	0	Department of Agriculture Forestry and Fisheries		<input type="checkbox"/>
90402	Dang Tong	Pesticide spraying support	1	time	0	Department of Agriculture Forestry and Fisheries		<input type="checkbox"/>
Social								
90402	Dang Tong	Latrine construction	10	set	0	Department of Rural Development		✓
90402	Dang Tong	HIV/AIDS awareness education	1	training	0	Provincial Office of Parliament and the Senate relation		✓
90402	Dang Tong	Electric equipment repair skill training	1	training	12000	Department of Labor and Vocational Training	PIF	✓
90402	Dang Tong	Reproductive health awareness education	6	training	1200	Provincial Local Administration Unit		✓
90402	Dang Tong	Sanitation day campaign organizing	1	training	0	Department of Rural Development		✓
90402	Dang Tong	HIV/AIDS carrier home based care	1	Time	0	Department of Health		<input type="checkbox"/>
90402	Dang Tong	Reproductive health awareness education	0	training	0	Department of Health		✓
90402	Dang Tong	HIV/AIDS awareness education	0	training	0	Department of Health		✓
90402	Dang Tong	Women vaccination, birth spacing and maternity health care service provision	6	time	0	Department of Health		<input type="checkbox"/>
90402	Dang Tong	Tuberculosis cases searching and monitoring	12	Time	0	Department of Health		<input type="checkbox"/>

District Data Book 2009: Development Plans and Projects

Commune GIS	Com mune	Temporary Agreements				Supporter	Funding Source	Listed in CIP befor DIW
		Project Name	Quantity	Unit	Est.Cost (K.Riels)			
90402	Dang Tong	HIV/AIDS education during water festival	1	Time	0	Department of Health		<input type="checkbox"/>
90402	Dang Tong	HIV/AIDS world day organizing	1	Time	0	Department of Health		<input type="checkbox"/>
90402	Dang Tong	Malaria, HIV/AIDS, sexual disease, tuberculosis, bird flue and nutrition education	1	Time	0	Department of Health		<input type="checkbox"/>
90402	Dang Tong	Breastfeeding world week organizing	1	Time	0	Department of Health		<input type="checkbox"/>
90402	Dang Tong	Vitamin A and deworming pills supply to children	2	time	0	Department of Health		<input type="checkbox"/>
90402	Dang Tong	World TB combat week organizing	1	Time	0	Department of Health		<input type="checkbox"/>
90402	Dang Tong	DOTS strategy implementation to cure TB	6	Time	0	Department of Health		<input type="checkbox"/>
90402	Dang Tong	TBA meeting	4	Time	0	Department of Health		<input type="checkbox"/>
90402	Dang Tong	Distribution workers meeting support	12	Time	0	Department of Health		<input type="checkbox"/>
90402	Dang Tong	Health center management committee meeting	6	Time	0	Department of Health		<input type="checkbox"/>
90402	Dang Tong	Village health worker meeting	12	Time	0	Department of Health		<input type="checkbox"/>
90402	Dang Tong	TB education at upper secondary school	1	Time	0	Department of Health		<input type="checkbox"/>
NREM								
90402	Dang Tong	Fishery law education	1	training	0	Provincial Office of Parliament and the Senate relation		<input type="checkbox"/>
90402	Dang Tong	Environmental awareness and law education	1	Time	1200	WildAid		✓
90402	Dang Tong	Fishery law education	1	Time	1200	WildAid		<input type="checkbox"/>
90402	Dang Tong	Forestry law education	1	Time	1200	WildAid		<input type="checkbox"/>
90402	Dang	Environmental awareness and law education	2	Time	0	Department of Environment	PIF	✓

District Data Book 2009: Development Plans and Projects

Commune GIS	Com mune	Temporary Agreements				Supporter	Funding Source	Listed in CIP befor DIW
		Project Name	Quantity	Unit	Est.Cost (K.Riels)			
	Tong							
90402	Dang Tong	NREM education campaign	3	time	4000	WildAid		<input type="checkbox"/>
Administration and Security								
90402	Dang Tong	Land law dissemination	1	training	1200	WildAid		✓
90402	Dang Tong	Drug and related law education	1	training	0	Provincial Office of Parliament and the Senate relation		✓
90402	Dang Tong	Traffic law dissemination	1	training	0	Provincial Office of Parliament and the Senate relation		<input type="checkbox"/>
90402	Dang Tong	Land law dissemination	2	training	0	Department of Land Management, Urban Planning & Construction		✓
90402	Dang Tong	Laws dissemination and legal consultation services	2	time	0	Legal Aid of Cambodia		<input type="checkbox"/>
Gender								
90402	Dang Tong	Gender mainstreaming strengthening meeting to CWCC	1	training	0	Department of Women	PIF	<input type="checkbox"/>
90402	Dang Tong	CC focal point and female leader forum support	1	training	0	Department of Women	PIF	<input type="checkbox"/>
90402	Dang Tong	Law against domestic violence dissemination	6	training	800	Provincial Local Administration Unit		✓
90402	Dang Tong	Report writing and planning formulation strengthening for CWCC	1	training	0	Department of Women	PIF	<input type="checkbox"/>

8.2.3 Temporary Agreements for 2009 as per DIW 2008 for Commune: Stueng Veang

Commune GIS	Commune	Temporary Agreements				Supporter	Funding Source	Listed in CIP before DIW
		Project Name	Quantity	Unit	Est.Cost (K.Riels)			
Economic								
90403	Stueng Veang	Budget management training and workshop	1	training	2000	WildAid		<input type="checkbox"/>
90403	Stueng Veang	Small health fund support for community	0	Riels	8000	WildAid		<input type="checkbox"/>
90403	Stueng Veang	Product marketing training and workshop	1	training	2000	WildAid		<input type="checkbox"/>
90403	Stueng Veang	Pesticide spraying support	1	time	0	Department of Agriculture Forestry and Fisheries		<input type="checkbox"/>
90403	Stueng Veang	Livestock vaccination and disease curing	1	time	0	Department of Agriculture Forestry and Fisheries		<input type="checkbox"/>
90403	Stueng Veang	Animal raising training	1	training	0	Department of Agriculture Forestry and Fisheries	PIF	<input checked="" type="checkbox"/>
90403	Stueng Veang	Community study tour support	1	time	1600	WildAid		<input type="checkbox"/>
Social								
90403	Stueng Veang	Latrine construction	10	set	0	Department of Rural Development		<input checked="" type="checkbox"/>
90403	Stueng Veang	HIV/AIDS awareness education	1	training	0	Provincial Office of Parliament and the Senate relation		<input checked="" type="checkbox"/>
90403	Stueng Veang	Sanitation education	1	training	0	Department of Rural Development		<input checked="" type="checkbox"/>
90403	Stueng Veang	HIV/AIDS carrier home based support group	12	Time	0	CARE International in Cambodia		<input type="checkbox"/>
90403	Stueng Veang	Reproductive health awareness education	6	training	1200	Provincial Local Administration Unit		<input checked="" type="checkbox"/>
90403	Stueng Veang	Baby care skills training to TBA	1	Time	0	CARE International in Cambodia		<input type="checkbox"/>
90403	Stueng Veang	HIV/AIDS peer education training	1	Time	0	CARE International in Cambodia		<input type="checkbox"/>
90403	Stueng Veang	Reproductive health education	4	Time	0	CARE International in Cambodia		<input type="checkbox"/>

District Data Book 2009: Development Plans and Projects

Commune GIS	Commune	Temporary Agreements				Supporter	Funding Source	Listed in CIP befor DIW
		Project Name	Quantity	Unit	Est.Cost (K.Riels)			
90403	Stueng Veang	Impregnated mosquitoes net distribution	1	Time	0	Department of Health		<input type="checkbox"/>
90403	Stueng Veang	HIV/AIDS carrier home based attendant group support through monk an village chief	1	Time	0	CARE International in Cambodia		<input type="checkbox"/>
90403	Stueng Veang	DOTS implementation watch meeting support	12	Time	0	WildAid		<input type="checkbox"/>
90403	Stueng Veang	Home based assistant group for orphan and vulnerable children support	12	Time	0	CARE International in Cambodia		<input type="checkbox"/>
90403	Stueng Veang	Tuberculosis cases searching within community	4	Time	0	CARE International in Cambodia		<input type="checkbox"/>
90403	Stueng Veang	Vitamin A and deworming pills supply to children	2	Time	0	Department of Health		<input type="checkbox"/>
90403	Stueng Veang	TBA meeting	4	Time	0	Department of Health		<input type="checkbox"/>
90403	Stueng Veang	Peer HIV/AIDS quarterly meeting	12	Time	0	CARE International in Cambodia		<input type="checkbox"/>
90403	Stueng Veang	World TB combat week organizing	1	Time	0	Department of Health		<input type="checkbox"/>
90403	Stueng Veang	Breastfeeding world week organizing	1	Time	0	CARE International in Cambodia		<input type="checkbox"/>
90403	Stueng Veang	Breastfeeding world week organizing	1	Time	0	Department of Health		<input type="checkbox"/>
90403	Stueng Veang	Tuberculosis cases searching and monitoring	12	Time	0	Department of Health		<input type="checkbox"/>
90403	Stueng Veang	Malaria, HIV/AIDS, sexual disease, tuberculosis, bird flue and nutrition education	1	Time	0	Department of Health		<input type="checkbox"/>
90403	Stueng Veang	DOTS strategy implementation to cure TB	6	Time	0	Department of Health		<input type="checkbox"/>
90403	Stueng Veang	Health center management committee meeting	6	Time	0	Department of Health		<input type="checkbox"/>
90403	Stueng Veang	Distribution workers meeting support	12	Time	0	Department of Health		<input type="checkbox"/>

District Data Book 2009: Development Plans and Projects

Commune GIS	Commune	Temporary Agreements				Supporter	Funding Source	Listed in CIP before DIW
		Project Name	Quantity	Unit	Est.Cost (K.Riels)			
90403	Stueng Veaeng	HIV/AIDS awareness education	0	training	0	Department of Health		✓
90403	Stueng Veaeng	TB education at upper secondary school	1	Time	0	Department of Health		□
90403	Stueng Veaeng	Reproductive health awareness education	0	training	0	Department of Health		✓
90403	Stueng Veaeng	KMeragpÁt;pÁg;Twks¥at	0	house	0	Department of Health		✓
90403	Stueng Veaeng	Sanitation education	0	training	0	Department of Health		✓
90403	Stueng Veaeng	Dengue fever outbreak control activities	2	Time	0	CARE International in Cambodia		□
90403	Stueng Veaeng	Village service delivery mission support	12	Time	0	CARE International in Cambodia		□
90403	Stueng Veaeng	Health education, maternal health care	4	Time	0	CARE International in Cambodia		□
90403	Stueng Veaeng	Village health worker meeting	12	Time	0	Department of Health		□
NREM								
90403	Stueng Veaeng	Environmental, fishery, forestry and land laws workshop training	1	training	2000	WildAid		□
90403	Stueng Veaeng	Illegal fishing prevention	1	training	0	Provincial Office of Parliament and the Senate relation		✓
90403	Stueng Veaeng	NREM education campaign	1	training	0	Department of Environment	PIF	✓
Administration and Security								
90403	Stueng Veaeng	Social land concession project support	10	ha	0	Department of Land Management, Urban Planning & Construction		✓
90403	Stueng Veaeng	Land law dissemination	1	training	0	Department of Land Management, Urban Planning & Construction		✓
90403	Stueng Veaeng	Laws dissemination and legal consultation services	2	time	0	Legal Aid of Cambodia		□

District Data Book 2009: Development Plans and Projects

Commune GIS	Commune	Temporary Agreements				Supporter	Funding Source	Listed in CIP before DIW
		Project Name	Quantity	Unit	Est.Cost (K.Riels)			
90403	Stueng Veaeng	Traffic law dissemination	1	training	0	Provincial Office of Parliament and the Senate relation		<input type="checkbox"/>
90403	Stueng Veaeng	Participatory planning and project proposal writing training	1	training	2000	WildAid		<input type="checkbox"/>
90403	Stueng Veaeng	Drug business/use prevention	1	training	0	Provincial Office of Parliament and the Senate relation		✓
Gender								
90403	Stueng Veaeng	CC focal point and female leader forum support	1	training	0	Department of Women	PIF	<input type="checkbox"/>
90403	Stueng Veaeng	Law against domestic violence dissemination	6	training	800	Provincial Local Administration Unit		✓
90403	Stueng Veaeng	Gender mainstreaming strengthening meeting to CWCC	1	training	0	Department of Women	PIF	<input type="checkbox"/>
90403	Stueng Veaeng	Report writing and planning formulation strengthening for CWCC	1	training	0	Department of Women	PIF	<input type="checkbox"/>

Source: CDPD, District Level Detail TA resulting from DIW

8.3 Outputs, estimated and actual costs of C/S Fund Projects between 2005 and 2008, by Commune

Commune	Project Type	Budget Year	Output		Quantity	Unit	Unit Cost MR	
			Description	Type			Estimate	Actual
Smach Mean Chey	Rural Transport	2005	Single cell box culvert	New	1	Place	11.70	13.00
Smach Mean Chey	Rural Transport	2005	Laterite road	Repair	0.241	Km	2.60	3.50
Smach Mean Chey	Rural Transport	2005	Laterite road	Repair	0.31	Km	6.97	5.05
Smach Mean Chey	Rural Transport	2005	Single pipe culvert	New	1	Place	2.99	2.99
Smach Mean Chey	Rural Transport	2005	Single pipe culvert	New	1	Place	3.40	3.40
Smach Mean Chey	Rural Drainage and Flood Protection	2005	Canal	Repair	0.39	Km	2.11	2.11
Smach Mean Chey	Rural Drainage and Flood Protection	2005	Canal	Repair	0.29	Km	2.72	2.72
Smach Mean Chey	Rural Drainage and Flood Protection	2005	Canal	Repair	0.14	Km	1.55	1.55
Smach Mean Chey	Rural Transport	2005	Single pipe culvert	New	1	Place	2.99	2.99
Smach Mean Chey	Rural Transport	2006	Laterite road	Repair	0.225	Km	3.58	3.80
Smach Mean Chey	Rural Transport	2006	Laterite road	Repair	0.355	Km	5.31	12.19
Smach Mean Chey	Rural Transport	2006	Single pipe culvert	New	1	Place	2.12	2.50
Smach Mean Chey	Rural Transport	2006	Laterite road	Repair	0.25	Km	7.13	4.60
Smach Mean Chey	Rural Transport	2006	Single pipe culvert	New	2	Place	6.05	12.19
Smach Mean Chey	Rural Transport	2006	Laterite road	Repair	0.14	Km	2.04	2.85
Smach Mean Chey	Rural Transport	2006	Laterite road	Repair	0.062	Km	0.76	1.00
Smach Mean Chey	Rural Transport	2006	Laterite road	New	0.22	Km	3.57	3.76
Smach Mean Chey	Rural Transport	2006	Single pipe culvert	New	1	Place	2.81	3.20
Smach Mean Chey	Rural Transport	2007	Gravel road	New	0.415	Km	12.71	12.71
Smach Mean Chey	Rural Transport	2007	Gravel road	Repair	0.12	Km	3.53	5.15
Smach Mean Chey	Rural Transport	2007	Gravel road	New	0.135	Km	3.95	3.95
Smach Mean Chey	Rural Transport	2007	Gravel road	New	0.418	Km	14.48	14.48
Smach Mean Chey	Rural Transport	2007	Single pipe culvert	New	1	Place	1.62	5.15
Smach Mean Chey	Rural Transport	2007	Gravel road	Repair	8.20E-02	Km	2.58	2.58
Smach Mean Chey	Rural Transport	2007	Gravel road	Repair	0.128	Km	3.75	3.75
Smach Mean Chey	Rural Transport	2008	Single pipe culvert	New	2	Place	6.37	27.06
Smach Mean Chey	Rural Transport	2008	Laterite road	New	0.196	Km	10.82	27.06
Smach Mean Chey	Rural Transport	2008	Laterite road	Repair	0.251	Km	9.89	27.06
Smach Mean Chey	Rural Transport	2008	Single pipe culvert	New	4	Place	13.41	13.39
Dang Tong	Rural Transport	2005	Laterite road	New	0.246	Km	3.23	4.41
Dang Tong	Rural Drainage and Flood Protection	2005	Drainage	New	1	Line	1.72	1.72
Dang Tong	Urban transport	2005	Concrete road	New	0.25	Km	42.00	43.58
Dang Tong	Urban Drainage and Flood Protection	2006	Concrete canal	New	0.128	Km	15.96	10.86

District Data Book 2009: Development Plans and Projects

Commune	Project Type	Budget Year	Output		Quantity	Unit	Unit Cost MR	
			Description	Type			Estimate	Actual
Dang Tong	Rural Transport	2006	Laterite road	Repair	0.45	Km	6.69	6.59
Dang Tong	Rural Transport	2006	Laterite road	New	9.50E-02	Km	3.55	4.65
Dang Tong	Rural Transport	2006	Single pipe culvert	New	1	Place	1.69	1.84
Dang Tong	Rural Transport	2006	Laterite road	Repair	0.167	Km	3.43	3.91
Dang Tong	Rural Transport	2006	Laterite road	New	0.216	Km	4.90	4.98
Dang Tong	Rural Transport	2006	Laterite road	New	0.246	Km	3.65	4.56
Dang Tong	Rural Transport	2006	Concrete road	New	0.25	Km	34.50	46.25
Dang Tong	Rural Transport	2006	Laterite road	Repair	0.3	Km	3.59	3.54
Dang Tong	Rural Drainage and Flood Protection	2006	Drain pipe for flood water	New	1	Line	2.11	2.18
Dang Tong	Urban Drainage and Flood Protection	2007	Single pipe culvert	New	1	Place	2.23	2.20
Dang Tong	Urban Drainage and Flood Protection	2007	Drainage	New	1	Line	10.38	10.38
Dang Tong	Urban Drainage and Flood Protection	2007	Drainage	New	1	Line	3.65	3.60
Dang Tong	Rural Transport	2007	Gravel road	New	9.00E-02	Km	4.45	7.45
Dang Tong	Rural Transport	2007	Gravel road	New	7.00E-02	Km	2.17	4.16
Dang Tong	Rural Transport	2007	Single pipe culvert	New	1	Place	1.99	4.16
Dang Tong	Rural Transport	2007	Gravel road	New	0.45	Km	13.81	13.81
Dang Tong	Rural Transport	2007	Gravel road	New	0.222	Km	7.88	7.88
Dang Tong	Rural Transport	2007	Gravel road	New	0.246	Km	7.45	7.45
Dang Tong	Rural Transport	2007	Single pipe culvert	New	1	Place	3.89	3.80
Dang Tong	Rural Transport	2008	Concrete road	New	0.108	Km	24.13	24.00
Dang Tong	Rural Transport	2008	Laterite road	Repair	0.185	Km	6.71	6.70
Dang Tong	Rural Transport	2008	Laterite road	Repair	0.38	Km	16.32	16.31
Stueng Veang	Rural Transport	2005	Laterite road	Repair	1.02	Km	18.51	21.70
Stueng Veang	Rural Transport	2005	Single pipe culvert	New	1	Place	2.12	21.70
Stueng Veang	Rural Transport	2006	Laterite road	New	0.281	Km	4.57	4.99
Stueng Veang	Rural Transport	2006	Laterite road	New	8.00E-02	Km	1.05	4.98
Stueng Veang	Rural Transport	2006	Single pipe culvert	New	1	Place	1.72	12.46
Stueng Veang	Rural Transport	2006	Single pipe culvert	New	1	Place	1.57	1.57
Stueng Veang	Rural Transport	2006	Laterite road	Repair	0.657	Km	10.83	12.46
Stueng Veang	Rural Transport	2007	Gravel road	New	0.45	Km	9.98	9.98
Stueng Veang	Rural Transport	2007	Gravel road	Repair	0.5	Km	14.72	14.72
Stueng Veang	Rural Transport	2008	Laterite road	Repair	0.698	Km	23.67	23.06
Stueng Veang	Rural Drainage and Flood Protection	2008	Drainage	New	0.55	Line	5.40	5.39

Source: PID

8.4 Total Expenditure on C/S Fund Projects by sector and commune between 2005 and 2008

Sector	Total Cost in Million Riels		
	Smach Mean Chey	Dang Tong	Stueng Veang
Rural Drainage and Flood Protection	6.38	1.72	5.39
Rural Transport	147.91	149.66	93.46
Urban Drainage and Flood Protection		27.04	
Urban transport		43.58	

Source: PID

8.5 Actual 2009 C/S Fund projects by Commune

Commune	Project Type	Project Output		Quantity	Unit	Fund Source (Riels)		
		Description	Type			Total	C/S	Local Contribution
Sangkat Smach Mean Chey	Rural Transport	Single pipe culvert 0.6m diameter	New	1	Place	17,200,000	17,200,000	0
Sangkat Smach Mean Chey	Rural Transport	Single pipe culvert 0.6m diameter	New	2	Place	17,200,000	17,200,000	0
Sangkat Smach Mean Chey	Rural Transport	Single pipe culvert 0.6m diameter	New	1	Place	17,200,000	17,200,000	0
Sangkat Smach Mean Chey	Rural Transport	Single pipe culvert 0.8m diameter	New	1	Place	17,200,000	17,200,000	0
Sangkat Smach Mean Chey	Urban Drainage and Flood Protection	Pipe drainage	New	1	Line	31,364,571	31,364,571	0
Sangkat Smach Mean Chey	Urban Drainage and Flood Protection	Unlined surface water drainage channel	New	1	Line	8,900,000	8,900,000	0
Sangkat Dang Tong	Rural Transport	Natural Gravel road	New	0.382	km	57,307,000	57,307,000	0
Sangkat Dang Tong	Rural Transport	Double pipe culvert 0.6m diameter	New	1	Place	57,307,000	57,307,000	0
Sangkat Dang Tong	Urban Drainage and Flood Protection	Box drainage	New	1	Line	17,325,000	17,325,000	0
Sangkat Stueng Veang	Rural Transport	Laterite road	Repair	1.17	km	37,071,650	37,071,650	0
Sangkat Stueng Veang	Rural Transport	Single pipe culvert 0.6m diameter	New	3	Place	37,071,650	37,071,650	0

Source: PID

9 District level Projects from 2006 to 2009

District Initiative Projects (DIPs) are funded by Danida, DFID and PSDD (UNDP, DFID and SIDA).

Funding for 2006-2008

Between 2006 and 2008 there were 14 provinces funded by PSDD and 10 by Danida and DFID. The list of provinces and who funded these is below

Danida and DFID funded DIPs:

Kampong Cham	Kampong Speu	Koh Kong	Kratie	Monduliri
Pursat	Ratanakiri	Siem Reap	Sihanoukville	Kep

PSDD funded DIPs:

Banteay Meanchey	Battambang	Kampong Chhnang	Kandal	Phnom Penh
Prey Veng	Svay Rieng	Takeo	Kampong Thom	Preah Vihear
Stung Treng	Kampot	Oddar Meanchey	Pailin	

Funding for 2009

In 2009 there was a change to the number of provinces funded by the two streams. Danida and DFID were still funding the same 10 provinces they had been funding the previous three years, but two more provinces were added *Kampong Thom and Kampot*. Now PSDD funds 12 provinces and Danida and DFID fund 12.

9.1 District Initiative Infrastructure Projects from 2006 to 2009

9.1.1 District Initiative Infrastructure Projects for 2006 to 2008

No District Initiative Infrastructure Projects were implemented in this district for 2006-2008

9.1.2 District Initiative Infrastructure Projects in 2009

No District Initiative Infrastructure Projects have been implemented in this district for 2009

9.2 District Initiative Service Projects from 2006 to 2009

9.2.1 District Initiative Service Projects for 2006 to 2008

No District Initiative Service Projects were implemented in this district for 2006-2008

9.2.2 District Initiative Service Projects in 2009

No District Initiative Service Projects have been implemented in this district for 2009

9.3 Inter Commune Council Projects in 2008 and 2009

9.3.1 ICC Projects in 2008

Districts	Project Location	Beneficiary Commune/ Sangkat	Outputs	Project Size	Unit	Contract Cost	Fund Sources	
							ICC Fund	Community
Botum Sakor	Thmasa, Andong Tik	Thmasa, Andong Tik, Tanuon	Road box-culvert construction (1 triple)	2	Unit	\$29,900.00	\$29,750.00	\$150.00
Total for Botum Sakor						\$29,900.00	\$29,750.00	\$150.00
Khemara Phoumin	Dang Tung, Smach Meanchey	Dang Tung, Smach Meanchey	Drainage system construction	540	Metre	\$11,717.00	\$11,617.00	\$100.00
	Dang Tung, Smach Meanchey	Dang Tung, Smach Meanchey	Concret road construction	180	Metre	\$18,500.00	\$18,300.00	\$200.00
Total for Khemara Phoumin						\$30,217.00	\$29,917.00	\$300.00
Total Koh Kong Province						\$60,117.00	\$59,667.00	\$450.00

9.3.2 ICC Projects in 2009

Districts	Project Location	Beneficiary Commune/ Sangkat	Outputs	Project Size	Unit	Contract Cost	Fund Sources	
							ICC Fund	Community
Khemarak Phumin	Dang Tung, Smach Mean Chey, Stueng Veng	Dang Tung, Smach Mean Chey, Stueng Veng	Concrete Road Construction	500	Meter	Contract not yet signed		
	Smach Mean Chey	Dang Tung, Smach Mean Chey, Stueng Veng	Dissemination on Water Sanitation, Hygiene, and Environment	4	Course	Contract not yet signed		
Total for Khemarak Phumin Municipality						\$0.00	\$0.00	\$0.00
Bothum Sakor	Thmor Sor	Andoung Tuek, Thmor Sor, Ta Nuon, Kan Daul	Concrete Road (for high school)	2	place	Contract not yet signed		
	Thmor Sor	Andoung Tuek, Thmor Sor, Ta Nuon, Kan Daul	Technical Training on Machinery Repair	1	Course	Contract not yet signed		
	Andoung Tuek	Andoung Tuek, Thmor Sor	Technical Training on Lobster/Shrimp Conservation	1	Course	Contract not yet signed		
Total for Botum Sakor						\$0.00	\$0.00	\$0.00
Sre Ambel	Sre Ambel	Boueng Preav, Sre Ambel	Concrete Road Construction	150	Meter	Contract not yet signed		
	Chi Khor Loue, Chi Khor Kroam	Chi Khor Loue, Chi Khor Kroam	Dissemination on Water Sanitation, Hygiene, and Environment	6	Course	Contract not yet signed		
	Chi Kor Kraom, Chhroy Svay	Chi Khor Kroam, Chhroy Svay	Technical Training on Fish, Crab and Shrimp Raising	2	Course	Contract not yet signed		
	Dang Peng	Dang Peng, Sre Ambel, Chi Khor Luer.	Bridge Construction	35	Meter	Contract not yet signed		
Total For Sre Ambel						\$0.00	\$0.00	
Total for Kah Kong						Contract not yet signed		

Source: ICC project, Ministry of Interior (DoLA), -UNDP project for Local Governance – DDLG

9.4 Other Projects in 2008 and 2009

9.4.1 RPRP

There are no RPRP projects being implemented in this district or province at this time. The RPRP is only being implemented in Svay Rieng and Prey Veng

9.4.1.1 RPRP Projects from 2006 to 2008

No RPRP projects in this district at this time

9.4.1.2 RPRP Projects in 2009

No RPRP projects in this district at this time

9.4.2 Seth Korma

9.4.2.1 Seth Koma 2007

There are no Seth Korma projects being implemented in this district or province at this time.

Source: UNICEF

9.4.2.2 Seth Koma 2008

There are no Seth Korma projects being implemented in this district or province at this time.

Source: UNICEF

9.4.2.3 Seth Koma 2009

There are no Seth Korma projects being implemented in this district or province at this time.

Source: UNICEF

SECTION D: SERVICES AND ORGANIZATIONS

10 Infrastructure

10.1 Length of and Expenditure on Roads in 2008, by District

Roads	KKG	Bothumsakor	kirisakor	Koh Kong	Khemarak phumen	Mondul sema	Sre Ambel	Thmabang
Length of paved road in the district	141	25	0	46	27	2	41	0
Length of unpaved roads in the district	803	91	3	38	140	101	368	62
Amount spent on construction of roads in 2008 (\$)	1,840,380	153,969	271,986	193,930	288,662	162,610	407,894	361,329
Amount spent on repair and rehabilitation of roads in 2008 (\$)	12,857						12,857	

Note 1: Please note that these data are not necessarily complete or correct. The data are derived from government agencies at provincial and district level which used different recording systems, did not always have complete data or were, sometimes, less than willing to share their data.

Note 2: Please be aware that these data are incomplete due to the fact that the amounts for the construction, repair and rehabilitation recorded reflect only funds provided by the government, not the contributions by any other parties.

10.2 Scale of and Expenditure on Irrigation in 2008, by District

Irrigation	KKG	Bothumsakor	kirisakor	Koh Kong	Khemarak phumen	Mondul sema	Sre Ambel	Thmabang
Number of irrigation schemes operating in 2008	5	2	0	0	0	0	3	0
Total nr of hectares under irrigation in dry season 2008	-	0	0	0	0	0	0	0
Total funds spent in 2008 on construction of irrigation systems (\$)	31,000	0	0	0	0	0	31,000	0
Total funds spent in 2008 on rehabilitation/repair of irrigation systems (\$)	77,488	77,488	0	0	0	0	0	0
Total funds spent in 2008 on operation and maintenance (\$)	3,221	3,221	0	0	0	0	0	0

Note 1: Please note that these data are not necessarily complete or correct. The data are derived from government agencies at provincial and district level which used different recording systems, did not always have complete data or were, sometimes, less than willing to share their data.

Note 2: Please be aware that the data above are incomplete as these only reflect funds provided by the government, not the contributions by farmers or other parties.

10.3 Power Supply in 2008, by District

Electricity	KKG	Bothumsakor	kirisakor	Koh Kong	Khemarak phumen	Mondul sema	Sre Ambel	Thmabang
Total number of electricity connections to households	19	6	2	1	1	2	5	2
Total number of electricity connections to agencies, companies, organizations	3	0	0	0	1	0	2	0
Total volume in KWh of electricity consumed last in 2008	108,650	39,000	22,275	1,875	n/a	n/a	45,500	n/a
Total amount collected from users for consumed electricity (\$)	68,202	24,375	7,593	2,109	n/a	n/a	34,125	n/a
Per capita electricity consumption in 2008 in Kwh	4	2	3	0	n/a	n/a	10	n/a

Note 1: Please note that these data are not necessarily complete or correct. The data are derived from government agencies at provincial and district level which used different recording systems, did not always have complete data or were, sometimes, less than willing to share their data.

Note 2: These data only record electricity provided by electricity companies and does not include homes powered by generators or batteries (for this information see Section B: General Profile, Part 1: General Information; table 1.3.1 and chart 1.3.4).

Note 3: In most provinces electricity is only provided through town-based networks

Note 4: Per capita consumption is calculated by dividing the total volume of electricity produced in 2008 by the number of people living in each district as per the 2008 census (for the provincial data it is calculated against the number of people living in the province)

11 Health Facilities

Please note that the Operational District (health) boundaries are different to the administrative district boundaries. Therefore the data provided here shows the facilities, staff, NGOs etc in each Operational District within the province NOT the administrative district.

Acronyms

Com Cov	Commune Covered	MW2	Secondary Midwives
CPA	Complementary Package of Activities	NU1	Primary Nurse
Dr	Doctor	NU2	Secondary Nurse
FDH	Former District Hospital	OD	Operational District
HC	Health Center	Others	Other Staff
HC (NB)	Health Center no building	PHD	Provincial Health Department
HP	Health Post	Pop 04-05	Population Covered 2004 or 2005
MA	Medical Assistant	RH	Referral Hospital
MPA	Minimum Package of Activities	Vil Cov	Village Covered
MW1	Primary Midwives	VIL-HC	Distance from Village to Health Center

11.1 Health Facilities in the Province, by Operational District

Koh Kong	OD	RH	HC	HP
Smach Meanchey	1	1	6	3
Sre Ambel	1	1	7	
Total	2	2	13	3

11.2 Health Facilities and Staff in the province, by Operational District

This table shows health facilities, staff and coverage of health facilities in each operational district.

No	Facility Name	Type	Class	Dr	Ma	Nu2	Nu1	Mw2	Mw1	Others	Com Cov	Vil Cov	Pop. 04-05
Smach Meanchey													
1	Bak Khlang	HC	MPA	0	1	7	1	3	0	0	3	11	8,239
2	Kaoh Kapi	HP	Nil	0	0	0	0	0	0	1	1	3	3,261
3	Kiri Sakor	FDH	MPA	0	1	4	1	1	0	0	3	9	5,465
4	Neang Kok	HC(NB)	None	0	0	0	0	0	0	0	1	2	5,582
5	Ruessei Chrum	HP	Nil	0	0	0	0	0	0	4	4	13	1,778
6	Smach Mean Chey	HC(NB)	None	0	0	0	2	3	2	0	2	8	20,610
7	Steung Veng	HC(NB)	None	0	0	0	0	0	0	0	2	3	9,449
8	Ta Tai Kraom	HP	Nil	0	0	0	0	0	0	1	1	2	810

No	Facility Name	Type	Class	Dr	Ma	Nu2	Nu1	Mw2	Mw1	Others	Com Cov	Vil Cov	Pop. 04-05
Total:				0	2	11	4	7	2	6	17	51	55,194
Sre Ambel													
1	Trapeang Rung	FDH	MPA	0	1	2	0	0	0	0	4	11	7,290
2	Andaung Teuk	FDH	MPA	0	0	1	1	1	0	0	2	11	7,044
3	Boeng Preav	HC	MPA	0	0	1	3	0	0	0	2	11	8,751
4	Chiphath	FDH	MPA	0	0	1	1	0	1	0	1	4	2,819
5	Kaev Phos	HC	None MPA	0	0	1	0	0	0	0	1	4	2,330
6	Srae Ambel	HC	MPA	0	0	2	2	1	0	0	4	22	23,009
7	Takavit	HC	MPA	0	0	1	1	0	0	3	4	13	13,307
Total:				0	1	9	8	2	1	3	18	76	64,550
Total All				0	3	20	12	9	3	9	35	127	119,744

Source: MEDiCAM – Infrastructure - (http://www.medicam-cambodia.org/hsi/health_system/srch/index.asp?cboLcn=6&cmdSearch=Search&cboCHName=&cboType=)

11.3 Deliveries in 2007 in the Province, by Operational District

OD	Deliveries	Deliveries at home		Deliveries	Total deliveries	Total deliveries
	at HC	By Health Staff	By TBAs	at RH	by Health Staff	by health staff and TBAs
Smach Mean Chey	234	171	385	366	771	1156
Srae Ambel	336	216	476	115	667	1143
<i>Sub-total</i>	<i>570</i>	<i>387</i>	<i>861</i>	<i>481</i>	<i>1438</i>	<i>2299</i>

Source: MoH, Annual Statistics 2007

12 Education³

12.1 Schools, Classes, Students, Staff, for all levels, for 2007/2008 by District

District	Number of Schools	Disadv. Schools	Number of Classes	Classes in Pagoda	Enrollment		Repeaters		Teaching Staff		Non-Teaching Staff		Total Staff	
					Total	Girl	Total	Girl	Total	Female	Total	Female	Total	Female
Botum Sakor	16	0	105	2	4,527	2,129	457	211	91	17	9	2	100	19
Kampong Seila	18	0	125	0	4,785	2,208	371	159	97	17	2	1	99	18
Kiri Sakor	8	0	55	0	1,911	925	208	108	34	4	2	2	36	6
Koh Kong	10	0	54	0	1,581	740	132	62	42	7	2	0	44	7
Mondul Seima	14	0	89	0	3,121	1,459	419	174	70	30	10	1	80	31
Smach Meanchey	11	1	151	0	6,513	2,936	373	176	190	66	24	8	214	74
Sre Ambel	42	1	276	4	10,300	4,754	1,131	480	220	54	18	7	238	61
Thmar Baing	11	0	49	0	1,602	691	206	95	24	1	1	0	25	1
Whole Province	130	2	904	6	34,340	15,842	3,297	1,465	768	196	68	21	836	217
- Urban Area	11	1	151	0	6,513	2,936	373	176	190	66	24	8	214	74
- Rural Area	76	1	506	6	19,612	9,091	1,959	850	408	88	29	10	437	98
- Remote Area	43	0	247	0	8,215	3,815	965	439	170	42	15	3	185	45

12.2 Characteristics of Schools and School Principals for 2007/2008 by Commune

Commune	Number of Schools				2 - Shift	Floating	Schools	Attached	Schools Without		Characteristics of School Principals (Incharge)			
	Pre-Sch	Primary	College	Lycee	Schools	Schools	in Pagoda	Pre-Sch	Water Sup.	Latrine	Avg. Age	Avg. Service	U.Sec+ Ed.	Female
Smach Mean Chey	2	4	1	1	6	0	0	2	1	1	44.0	21.5	4	2
Dang Tong	0	1	1	0	1	0	0	0	0		32.8	13.5	1	0
Stueng Veang	0	1	0	0	0	0	1	0	0		30.1	7.0	0	0

³ All the data for section 12 comes from the Ministry of Education, Youth and Sport (MoEYS)

12.3 Enrolment by Level of Education, 2006/2007 by Commune

Commune	School	Pre school		Primary School		Lower Secondary School		Upper Secondary School		Enrolment	
		Total	Female	Total	Female	Total	Female	Total	Female	Total	Female
Smach Mean Chey	8	100	46	3257	1495	1428	671	691	282	5476	2494
Dang Tong	1	0	0	1416	654	0	0	0	0	1416	654
Stueng Veang	1	0	0	65	37	0	0	0	0	65	37

12.4 Enrolment by Level of Education, 2007/2008 by Commune

Commune	School	Pre school		Primary School		Lower Secondary School		Upper Secondary School		Enrolment	
		Total	Female	Total	Female	Total	Female	Total	Female	Total	Female
Smach Mean Chey	8	72	41	2821	1344	1545	679	871	351	5309	2415
Dang Tong	2	0	0	1028	436	103	48	0		1131	484
Stueng Veang	1	0	0	73	37	0	0	0		73	37

12.5 Aspects of Enrolment for 2007/2008 by Commune

Commune	% Repeaters (Total)			% Over-age Enrollment (Total)			% Repeaters (Girl)			% Over-age Enrollment (Girl)		
	Primary	L.Sec.	U.Sec.	Primary	L.Sec.	U.Sec.	Primary	L.Sec.	U.Sec.	Primary	L.Sec.	U.Sec.
Smach Mean Chey	9.2	0.8	1.7	26.0	44.1	38.0	9.0	0.6	1.1	24.9	40.9	25.1
Dang Tong	7.9	0.0	0.0	9.1	22.3	0.0	10.3	0.0	0.0	7.8	14.6	0.0
Stueng Veang	8.2	0.0	0.0	5.5	0.0	0.0	5.4	0.0	0.0	5.4	0.0	0.0

12.6 School Buildings for all schools in the District for 2007/2008, by Commune

Commune	Total Number of		Concrete/Brick Structure		Wooden Structure		Bamboo Structure		New Buildings		Buildings Without Good		
	Buildings	Rooms	Buildings	Rooms	Buildings	Rooms	Buildings	Rooms	Repaired	Constructed	Floor	Roof	Wall
Smach Mean Chey	18	72	17	71	0	0	1	1	0	0	5	3	3
Dang Tong	4	17	3	15	1	2	0	0	2	1	2	2	2
Stueng Veang	1	4	1	4	0	0	0	0	1	0	0	0	0

12.7 Conditions of Classrooms and Existence of Separate School Office and Library, by Commune

Commune	Number of Class rooms	Number of Classrooms			Classrooms Without Good			Number of Furniture needed				Schools with Separate	
		in Pagoda	New Repaired	New Constr.	Floor	Roof	Wall	Desks	Chairs	Black-board	Teacher Table	Office	Library
Smach Mean Chey	62	0	0	0	15	9	3	144	144	24	23	5	4
Dang Tong	14	0	12	5	12	12	12	25	12	12	12	1	1
Stueng Veang	3	0	4	0	0	0	0	3	3	0	3	1	0

12.8 Community Participation and Financing across all schools in the District for 2007/2008 by Commune

Commune	Parent Association				Commu. Teachers	Teaching Monks	PAP Fund (Riel)		Number of Schools Obtaining Funds from				
	Exists	Held Meet	Total	Female			per Student	per School	Sch. Income	Community	Gvt. For building	Abroad	IOs/NGOs
Smach Mean Chey	7	7	10	2	0	0	8,457	5,683,388	0	1	0	0	0
Dang Tong	2	2	6	0	0	0	4,237	6,000,000	0	0	0	0	0
Stueng Veang	1	1	4	0	0	0	24,745	1,608,400	0	0	0	0	0

12.9 Percentage Student Flow Rates and Graduation by level 2006/2007, by Commune

Commune	Primary Level (Grades 1-6)			Lower Secondary Level (Grades 7-9)			Upper Secondary Level (Grades 10-12)			Successful Candidates		
	Promotion	Repetition	Dropout	Promotion	Repetition	Dropout	Promotion	Repetition	Dropout	Grade 6	Grade 9	Grade 12
Smach Mean Chey	81.1	8.0	10.9	92.9	0.8	6.3	89.1	2.1	8.8	449	294	150
Dang Tong	61.7	5.7	32.6	0.0	0.0	0.0	0.0	0.0	0.0	95	0	0
Stueng Veang	76.9	9.2	13.8	0.0	0.0	0.0	0.0	0.0	0.0	3	0	0

13 Staff and Resources at the District

This chapter presents data from the District Information System, collected around the middle of 2009 unless otherwise specified.

13.1 District Councilors elected in 2009

Name	Sex	Year of Birth	Function	Phone
កុក សំអាន	M	1955	Chairperson of The Council	016-224 343
ប៉ែន ណារី	M	1948	Councillor	016-891 160
ហាក់ ឡេង	M	1975	Councillor	011-499 777
នៅ សារួន	M	1965	Councillor	011-821 518
ស្រី ស៊ីផន	F	1952	Councillor	011-337 104
សិន ស៊ុន	M	1947	Councillor	011-729 805
វណ្ណ ទូលាស់	M	1949	Councillor	011-624 665
កង សាមឌី	F	1955	Councillor	011-736 121
ច័ន្ទ សារឿន	M	1950	Councillor	016-964 200
ផៃ យ៉ាត់	F	1950	Councillor	016-570 333
ឡាយ វិត្តារី	F	1957	Councillor	092-211 986
ខុន ណារី	M	1957	Councillor	016-857 820
ចាន់ ដារី	M	1977	Councillor	015-810 707

13.2 Committees of the Council

Please note at the time of producing the district data books the composition of the committees was not known for all district councils and therefore data were not available for 13.2.1, 13.2.2, 13.2.3.

13.2.1 Technical Facilitation Committee

13.2.2 Women's and Children's Affairs Committee

13.2.3 Procurement Committee

13.3 Board of Governors

Name	Sex	DoB	Function	Salary Level	Body	Phone
ផៃ ធួន ផ្លាបកេសន	M	1960	Municipality governor	ក.ក.៤	High Ranking Civil Servant	011-821 478
យូ មី	M	1960	Municipality deputy governor	ក.ក.១០	High Ranking Civil Servant	015-587 711
ប៉ែន ប៊ុនឈួយ	M	1969	Municipality deputy governor	ខ.២.៩	Medium Civil Servant	015-881 966
សុន ត្រង	M	1958	Municipality deputy governor	គ.ក.១៤	Secretary	016-593 561

13.4 Offices under Sala Krong, Sala Srok and Sala Khan

Office Name	Chief		Deputy Chief		No. of Staff				Office Area (m2)	No of vehicle (public or program)	
					State		Contract			vehicle	moto
	M	F	M	F	M	F	M	F			
District/ Khan Cabinet	1	0	0	1	0	0	0	0	Borrow	0	0
Adminnistration Office	0	1	0	0	8	6	1	0	22.8	0	0

13.5 Municipality/District/Khan line offices

Office Name	Chief		Deputy Chief		No. of Staff				Office Area (m2)	No of vehicle (public or program)	
					State		Contract			vehicle	moto
	M	F	M	F	M	F	M	F			
District/ Khan Police Headquarter	1	0	4	0	47	1	0	0	Borrow	1	1
District/ Khan Military Police Headquarter	1	0	2	0	10	0	0	0	83	1	1
District/ Khan Military Subregion	1	0	2	0	6	0	0	0	83	0	0
Planning Office	1	0	0	0	0	0	0	0	None	0	0
Education Office	1	0	1	0	5	0	0	0	Borrow	0	0
Agriculture Office	1	0	0	0	0	0	0	0	None	0	0
Lan Management Office	1	0	1	0	3	0	0	0	180	0	0
Environment Ranger	1	0	0	0	0	0	0	0	None	0	0

13.6 Properties and Equipment of District Administration

13.6.1 Buildings

Description	Unit	Number	Remark
Office building type			
- Concrete	building	1	
- Wood	building	0	
- Mixed	building	0	
Total floor space	m2		
- Concrete	m2	316.09	
- Wood	m2	0	
- Mixed	m2	0	
Building condition			
- Concrete	%	80	
- Wood	%	0	
- Mixed	%	0	
Office reserved land area	m2	0	
Total office land area	m2	15,720	

13.6.2 Means of Transport available at the District Administration

Description	Unit	Number	Remark
Vehicle (type, size and condition)	Vehicle	0	
Motorcycle (type, size and condition)	Motor	0	

13.6.3 Equipment in District Offices

Description	Unit	Number	Remark
Generator	per set	0	
Photocopy machine at the office	per set	0	
Private photocopy machine at the district town	place	6	
Telephone network (mobile line service)	network	0	

Description	Unit	Number	Remark
Telephone network (land line service)	network	0	
Fax (include Fax number)	per set	0	
Computer	per set	2	
Printer	per set	1	
Scanner	Per set	0	
Number of computers those can access Internet and email services in the municipality/ district/khan office (including the technical line offices (please provide the email address)	set	0	
Typewriters (including the technical line offices)	per set	0	
Staff of Municipality/district/khan office can use computer	person	0	

13.6.4 Equipment and facilities at the District Town

Description	Unit	Number	Remark
Availability of electricity at noon	Nr Hours	12	
Private internet and email services in the municipality/ district/khan town.	place	0	

13.7 Registered Revenue of the District Administration in 2008⁴

13.8 Services in the District

13.8.1 Public Sector Services

Type of Infrastructure/services	Unit	Number	
		Public	Private
Schools			
Pre-school	room	3	4
Primary School	room	55	0
Secondary school	room	10	0
High School	room	7	0
University	room	0	6
Health			
Health post	place		
Health center	place		
Referral Hospital	bed		

13.9 Civil Society Organizations active in the District

13.9.1 NGOs, Associations, Programs and Projects

13.9.2 Political Parties active in the Municipality, District and Khan

Name	Abbr.	Office in District
Cambodian People Party	CPP	Yes
FUNCINPEC Party	FUNCINPEC	Yes
NRP	NRP	Yes
SAM RAINSY Party	Sam Rainsy Party	Yes

⁴ Please note that the data in this table are at best estimates. If the table appears blank it does not mean there is no revenue, just that the data have not been recorded/entered.

13.10 Private Sector Organizations

13.10.1 Registered Companies in 2008, by District

On private sector at commune and/or district level	KKG	Bothumsakor	kirisakor	Koh Kong	Khemarak phumen	Mondul sema	Sre Ambel	Thmabang
Businesses and Companies								
Number of registered agricultural enterprises (except family farms)	1	0	0	0	0	0	1	
Number of registered shops, restaurants, transporters and other services	540	29	10	52	121	168	108	25
Number of manufacturing companies	29	5	0	1	13	2	8	0
Number of registered forestry enterprises	16	0	0	0	6	2	8	0
Number of registered mining companies	7	0	0	0	0	3	4	0
Number of financial institutions	7	1	0	1	1	1	3	0
Number of other commercial institutions		0	0	0	0	0	0	0
Estimated number of informal enterprises (not registered)	664	146	41	16	47	20	359	35
Employment								
Number of people employed in 2008 by companies or any other enterprises	2,300						2,300	
Investment								
Amount invested in 2008 by private sector (\$)	n/a	n/a	n/a	n/a	n/a	n/a	n/a	n/a
Markets								
Number of markets, operating at least weekly	11	3	1	1	1	3	2	

Note: These data are not comprehensive as different companies and business are registered with different departments and not all departments were able or willing to provide detailed information. The number of informal enterprises reflects a rough estimate, made at provincial level and could not be verified.

Source: Unofficially collected at Provincial Level

13.10.2 Farmers in 2008, by District

Credit	KKG	Bothumsakor	kirisakor	Koh Kong	Khemarak phumen	Mondul sema	Sre Ambel	Thmabang
Volume of credit provided to farmers in 2008 (\$)	27,489	n/a	n/a	13,384	0	14,105	n/a	n/a
Number of farmers receiving credit in 2008	52	n/a	n/a	34	0	18	n/a	n/a
Volume of credit provided to companies in 2008 (\$)	128,235	n/a	n/a	0	40,000	88,235	n/a	n/a

Note: Please note that these data are not necessarily complete or correct. The data are derived from government agencies at provincial and district level which used different recording systems, did not always have complete data or were, sometimes, less than willing to share their data.

Source: Unofficially collected at Provincial Level

SECTION E: POVERTY DATA

14 Data on Poverty

14.1 Predicted Poverty Rates for 2009, by commune

The **Predicted Family Poverty Rate** is based on a statistical model (robust multilevel mixed effect regression) at village level developed by the NCDD M&E Unit and uses CDB data for making an estimate of the predicted poverty rate (this is: *the portion of total families in the district or commune who are expected to be poor*) for the following year using current year data.

The basis for this predicted poverty rate also uses IDPoor (a project of the Ministry of Planning with technical assistance provided by GTZ) data

Commune	2004	2009
Smach Mean Chey	18.10%	10.60%
Dang Tong	21.80%	4.40%
Stueng Veang	30.60%	16%

14.2 Poverty data from survey

14.2.1 Identification of Poor Households Program (IDPoor)

The Ministry of Planning IDPoor Program has developed standardized Procedures for Identification of Poor Households in rural areas. These Procedures are implemented using a participatory and consultative process by sub-national government structures and community representatives.

The IDPoor Program is managed by the Ministry of Planning (MOP), in cooperation with the Ministry of Interior's Department of Local Administration (DOLA). The program is supported by the Federal Republic of Germany, with technical assistance provided by German Technical Cooperation (GTZ). In 2009, AusAID also provided funding support to the Program.

Objective

The IDPoor Program aims to implement the Procedures for Identification of Poor Households in rural areas as widely as possible, in order to provide data on the level of poverty of areas and households that can be used by a large range of institutions and organizations for targeting services and development assistance to poor areas and poor households.

Coverage: During 2007, 2008 and 2009 the IDPoor Procedures have been implemented in 18 provinces (with partial or complete coverage), covering a total of around 7000 rural villages. The MOP and a number of NGO partners who are Health Equity Fund Operators have collaborated in collecting this data from different areas.

Categorization: Identified poor households are classified under two poverty categories: Poor Level 1 (very poor), and Poor Level 2 (poor). Households are classified based on data collected using a standard questionnaire, together with consideration by villagers of these households' special circumstances.

Further information: Please go to the IDPoor Program webpage at www.mop.gov.kh/Projects/IDPoor/tabid/154/Default.aspx

This District has not yet been covered by IDPoor

